



# WORKING GENES

**8TH BULL SALE 2025**

**INCHEOCH**

**TUES 9TH SEPTEMBER 4.30 PM**  
**ON-FARM SALE — ON-LINE BIDDING**



**12 SIMMENTAL - 1 ANGUS - 4 LUING**



Viewing Days:  
Sunday 31st Aug 3pm  
Thursday 4th Sept 3pm  
Or call to arrange a viewing.  
Videos at [www.incheochfarm.co.uk](http://www.incheochfarm.co.uk)



**MATERNAL GENETICS**  
**PADDOCK REARED**  
**FOR FERTILITY AND LONGEVITY**

*Functional Efficient Robust*

## Welcome to the 8th **WORKING GENES** Bull Sale

*'Functional, fertile cattle, structurally sound  
for longevity, and with good temperament  
will never go out of style'*



The Incheoch **SIMMENTAL** herd of 50 - mostly polled - cows is based on the most functional cow families from the previous 'Dirnanean' herd. Calving ease, structural soundness for longevity and a calm, maternal character have always been a priority—we've turned up the pressure on lower mature weight, ease of fleshing and fertility in order to find you sires that will leave lower maintenance, regular calving, long lasting daughters ...and a steer with do-ability and a good top.

Inchisla **ANGUS** are bred to provide a short-gestation, calving-ease sire and leave easy-finished grass-type cattle. Clare has produced us bulls particularly suited to go to yearling heifers, which have left calves with performance hard to fault.

The Dirnanean **LUING** cows have been the backbone of our business for 50 years. Fertile, hardy, easy to manage, fleshing ability from 2nd quality forage, and a temperament that makes working with cattle a pleasure. Our pure Luing steers can put a lot of weight on at grass and finish before their second winter—if you are visiting, make sure to have a look at them. More cattlemen are turning to the Luing bull for an injection of no-nonsense cow-traits into their herd.



Bulls (16-17 months)  
12 Simmental, 1 Angus, 4 Luings

On-line, silent auction by Yourbid — ends 4.30pm 9th September.

Come to the Sale to see bulls in their paddocks and bid without the pressure of the auction-ring.

Videos on Youtube. Viewing days:  
Sunday 31st Aug 3-8pm Thursday 4th Sept 3-8pm  
...or give us a call and stop in anytime.

\*\*\*\* Bluetongue Vaccinated \*\*\*\*

“Robust bulls, bred from Functional, Efficient cows has been our goal for many years now. We run just over 200 pedigree, performance recorded cows, and select hard for fertility, structural soundness, good temperaments and easy calving. We find that easy-fleshed, medium framed cattle with a bit of maternal character tend to be the ones who tick the boxes—and we think the bulls we have on offer today can transfer these traits to your herd.

These bulls were not creep fed, had paddock exercise through the winter and have been summered at grass. Our non-intensive system of developing bulls lets you pick out the ones that can put on flesh from forage.

This group of bulls have been halter broken but not led, their feet are shown untrimmed and were semen tested on 14th August.

We hope that you find a bull to do you a bit of good.”

*The McGowan family*



## Terms & Conditions

- Bidding in £ pounds.
- Sale held with Pentland Auctions, invoice emailed by Messrs Finlay McGowan.
- Bulls will be sold with the usual breeding warranty given.

## Collection

- We don't expect bulls to be uplifted on sale day—they will be nose-rung before collection unless requested. We will try to help delivery where possible.
- Bulls will be semen tested pre-sale and results available.
- All stock can be left at Incheoch, at our risk, until the end of September. Bulls can be kept longer by separate agreement under a wintering option at £25/week.

## Herd Health

The health and fertility of the Incheoch herd has always been a priority, being the bedrock of profitable cattle production. As well as controlling the 'Health scheme' diseases, the herd has enjoyed general good health and excellent fertility. Respiratory disease and scours, along with most of the common cattle ailments are rare at Incheoch and antibiotic use is minimal.

**Johnes Disease:** The herd is a member of the Premium Cattle Health Scheme run by SAC and has been pro-actively engaged in controlling Johnes Disease, over and above the requirements of the scheme, for 27 years. There have been no clinical cases within the herd for many years and the herd as a risk level 2. In the last 10 years a total of 2175 individual blood tests have been carried out with only 6 positives. None of the animals presented for sale have a history of Johnes in their families.

**BVD:** The herd has been fully accredited for 19 years and is additionally vaccinated. All animals presented for sale are individually vaccinated and accredited.

**Leptospirosis:** There is no history of this disease in the herd and it is now policy not to vaccinate the breeding herd, but sale animals have been vaccinated.

**IBR:** The breeding herd is vaccinated, believed IBR free though not accredited. Bulls are not vaccinated prior to sale but this can be arranged prior to collection if they are not going to an IBR free herd

If you have any questions regarding the health status please feel free to speak to Neil or call me at Thrums Vet Group on 01575 572643.

*Graeme Richardson*

## Myostatin

All bulls DNA sire verified and tested for breed relevant myostatin variants.  
No variants found.

## Bluetongue Vaccine

All bulls vaccinated with Bultavo-3  
5/6/25 & 25/6/25

Catalogue Details: We have tried to supply as much relevant information in the catalogue as we can, and present it as clearly as possible.

EBVs are shown in the format shown below. Please be aware that the EBVs for different breeds cannot be directly compared. For convenience, a colour code system highlights where the ebv falls within the wider breed genetic pool:

Top 10%  
 Top 25%  
 Average+  
 Lower 50% (Mwt only)

Index of relevant traits for:  
 TI = Bull to be used in terminal herd  
 SRI = for use in Self Replacing herd with proportion of daughters kept.

Calving Ease traits:  
 Dir = Direct Calving Ease (calves born, sired by the bull)  
 Dtrs = Daughter's Calving Ease (how easily his daughters give birth).  
 Postive Numbers Favourable

Carcase Traits (from Ultrasound Scanning):  
 Cwt = Carcase Weight  
 EMA = Eye Muscle Area  
 Fat = Positve for More Fat.

Gestation Length  
 (negative for shorter gestation).

Birthweight  
 (lower number for smaller birth-weighths).

Maternal Traits:  
 Milk is measure of Maternal influence on calf growth to 200days.  
 SS = Scrotal Circumference.

Gibby's Real Deal

Calv-Ease		Birth		Growth						Carcase			Index	
Dir	Dtrs	GL	Bwt	200	400	600	Mwt	Milk	SS	Cwt	EMA	Fat	TI	SRI
2.2	3.7	-1.2	1.3	43	64	61	65	5	0.1	46	4.5	1.0	77	91
82%	77%	86%	92%	88%	89%	86%	81%	78%	82%	77%	61%	74%	(accuracy)	

Growth Traits:  
 200, 400 & 600 day weights  
 Mwt = Mature Weight (we have highlighted grey the bulls with EBVs in the **lower 50%** of the breed for Mature Weight).  
 Higher numbers, more kgs.

Accuracy represents the reliability of the EBV prediction—it reflects the amount of data that has been gathered on the individual and the members of it's family. Over 70% would give a high 'confidence level' in the EBV (often only achieved with progeny measured), and lower than 30% would be low confidence.



**Lot 1** Incheoch Ross PP

UK 542191 604721  
born 15/03/24 Frame Score: 7.5  
836 kg 44 cm (14th August)

J15 has big boots to fill if she is to replace her mother, who has brought home 10 calves including bulls Glencoe, Iceman, and Paragon—but she's shaping up to it as a standout cow in the paddock who rears a good calf.

Ross is a twin, and has 3 full sisters in the herd. He is a big, able, nicely-built bull with a lovely disposition and a set of figures that is hard to beat for a maternal bull.



PHS Polled Worldwide	Rogent (Imp DE)
	Rolling Acres Red Fern
I. Calypso J15 P	Dirnanean Fontana P
	D. Calypso D18 P

Calv-Ease		Birth		Growth						Carcase			Index	
Dir	Dtrs	GL	Bwt	200	400	600	Mwt	Milk	SS	Cwt	EMA	Fat	TI	SRI
8.1	5.6	-2.3	0.4	41	70	69	75	12	1.7	52	5.0	0.6	90	119
52%	48%	54%	70%	62%	60%	59%	53%	48%	48%	50%	37%	48%	(accuracy)	

## Lot 2 Incheoch Ragusa P

UK 542191 704827  
born 13/04/24 Frame Score: 8.0  
852 kg 44 cm (14th August)

Ragusa has 2 ideals—an absolute curve-bending graph (low bwt, high wean wt, low cow weight, with lots of fat cover), and his mother is the prettiest cow in the herd. She calved at 24mths with 7 calvings at 366d interval, no assists and a nice udder—pictured with Ragusa at foot.



Full brother to Nanton (top price at Rockcliffe dispersal).



PHS Polled Worldwide	Rogent (Imp DE)
	Rolling Acres Red Fern
Incheoch Meise I6	Dirnanean Fontana P
	Dirnanean Meise G10 P

Calv-Ease		Birth		Growth						Carcase			Index	
Dir	Dtrs	GL	Bwt	200	400	600	Mwt	Milk	SS	Cwt	EMA	Fat	TI	SRI
6.6	4.2	-2.0	1.0	42	76	70	64	16	2.5	56	6.1	0.7	100	130
54%	49%	65%	76%	73%	72%	68%	57%	49%	71%	59%	48%	57%	(accuracy)	

### Lot 3 Incheoch Rocky P

UK 542191 204801  
born 06/04/24 Frame Score: 8.0  
810 kg 45 cm (14th August)

Rocky completes this set of 3 very similar bred bulls. He boasts a top 1% fat cover and balances a top 5% wean wt with a bottom 15% cow weight.

K13 is a beautifully uddered cow who is full sister to Hennessy (Lanton Est).

Rocky is full  
brother to  
N a n o o k  
(Prieston)  
pictured.



PHS Polled Worldwide	Rogent (Imp DE)
	Rolling Acres Red Fern
I. Lightning K13 P	Gibby's Real Deal PP
	D Lightning D6 P

Calv-Ease				Birth				Growth								Carcase				Index	
Dir	Dtrs	GL	Bwt	200	400	600	Mwt	Milk	SS	Cwt	EMA	Fat		TI	SRI						
6.7	4.5	-3.3	0.7	46	70	67	58	14	2.5	48	4.8	1.3		86	115						
54%	49%	65%	76%	72%	71%	67%	56%	45%	70%	58%	46%	54%		(accuracy)							

## Reference Sire

## PHS Polled Worldwide 14W

The sire of Auroch Deuter, who has worked well for us, including breeding Kelly (at Culmaily) and Patrick (at Aikengall). The sisters to these bulls are milking well and keeping good udders despite the high milk figures.

Polled, with a great phenotype and an ideal set of figures—he's been a good addition to our program.

His Canadian mother pictured.



Rogent (Imp DE)	Roger
	Loris
Rolling Acres Red Fern	Dora Lee's Classic Image
	Dayton's Miss Pol Bernd

Calv-Ease				Birth				Growth								Carcase				Index	
Dir	Dtrs	GL	Bwt	200	400	600	Mwt	Milk	SS	Cwt	EMA	Fat		TI	SRI						
12.7	6.2	-4.1	-0.9	45	74	67	51	18	3.4	51	5.2	1.2		94	134						
89%	80%	85%	93%	89%	89%	85%	74%	71%	80%	76%	59%	71%		(accuracy)							



**Lot 4** Incheoch Reuben P

UK 542191 204794  
born 05/04/24 Frame Score: 7.6  
800 kg 45 cm (14th August)

A thick, deep, easy-going bull, Reuben boasts a top 1% fat and marbling score, along with a good set of calving ease figures.

Dam calved at 24mths with 4 calvings at 368 day interval. She is one of the smallest cows in the herd at 640kg going to the bull and brought in one of the top weaning% with Reuben at foot.




Incheoch Keystone PP	Gibby's Real Deal PP
	Incheoch Polarine H3 P
Incheoch Girlie L7	Kyleston Iceman P
	Incheoch Girlie I1 P (ET)

Calv-Ease		Birth		Growth						Carcase			Index	
Dir	Dtrs	GL	Bwt	200	400	600	Mwt	Milk	SS	Cwt	EMA	Fat	TI	SRI
0.9	0.4	-1.3	1.7	35	71	60	44	6	2.0	41	3.5	1.3	80	99
46%	38%	63%	75%	72%	70%	66%	54%	38%	69%	57%	46%	56%	(accuracy)	

## Lot 5 Incheoch Rockyford PP

UK 542191 404866  
born 22/04/24 Frame Score: 7.6  
752 kg 36 cm (14th August)

Homozygous polled, great length, wide hipped and a smart outline, Rockyford comes from a big-framed cow line. Dam sired by the pick of our first sale—Iceman (pictured below), is still going strong with Rob Wainwright, on the Isle of Coll.



Incheoch Keystone PP	Gibby's Real Deal PP
	Incheoch Polarine H3 P
Incheoch Girlie K16 P	Incheoch Iceman PP
	D Girlie E15 (ET)

Calv-Ease				Birth				Growth				Carcase				Index	
Dir	Dtrs	GL	Bwt	200	400	600	Mwt	Milk	SS	Cwt	EMA	Fat	TI	SRI			
-0.6	1.7	0.1	3.1	43	61	65	76	6	-1.4	42	2.0	0.0	65	64			
50%	41%	63%	76%	72%	71%	67%	55%	40%	70%	58%	46%	54%	(accuracy)				



**Lot 6** Incheoch Rocco P

UK 542191 60440  
born 14/04/24 Frame Score: 7.8  
760 kg **33 cm** (14th August)

We think Rocco is going to be one of the picks of the group. He has a good set of growth figures, resulting in the top carcass weight ebv in the sale; easy calving; good milk—and in an easy-moving, robust looking package.



M2 is a bigger made cow but still brought in a 48% wean weight with this fella at foot. She calved at 26mth with a 372int over 3 calvings.

Clearwater Nitrous P	Booroola P (Imp DE)
	Lopemedede Funny Girl 2 P
I. Calypso M2 P	Gibby's Real Deal PP
	Incheoch Calypso H2

Calv-Ease				Birth				Growth								Carcase			Index	
Dir	Dtrs	GL	Bwt	200	400	600	Mwt	Milk	SS	Cwt	EMA	Fat				TI	SRI			
-0.6	2.9	-0.4	2.6	46	80	77	75	8	-1.3	60	5.3	-0.1				99	104			
45%	34%	52%	74%	68%	67%	62%	50%	32%	66%	53%	41%	51%	(accuracy)							

## Lot 7 Incheoch Raasay PP

UK 542191 604903  
born 11/05/24 Frame Score: 7.5  
734 kg 43 cm (14th August)

Raasay is the homozygous polled of these 3/4 brothers. Long, solid red and a gentle nature—the Nitrous sons look to us like long-lasting, robust types that will leave a string of functional cows.



L10 calved at 24mth with a 373int over 4 calvings.

Clearwater Nitrous P	Booroola P (Imp DE)
	Lopemedede Funny Girl 2 P
Incheoch Girlie L10 P	Gibby's Real Deal PP
	Dirnanean Girlie G28

Calv-Ease		Birth		Growth						Carcase			Index	
Dir	Dtrs	GL	Bwt	200	400	600	Mwt	Milk	SS	Cwt	EMA	Fat	TI	SRI
-0.4	2.8	0.3	2.3	39	71	74	83	8	1.4	55	5.4	0.7	86	108
46%	35%	53%	75%	68%	68%	63%	50%	33%	66%	53%	42%	52%	(accuracy)	

## Reference Sire

### Incheoch Niko PP

Top seller 2023 sale to Islavale (semen retained).

Niko has tremendous length, thickness and easy-fleshing from a favourite female line. The pick of the yearling heifers are both Niko daughters.

He is firmly on the 'keep using widely' list.



Kyleston Iceman P	Keeldrum Eclipse P
	Kyleston Ruffles F10
Incheoch Calypso K7 P	Auroch Deuter PP
	D. Calypso D18 P

Calv-Ease		Birth		Growth						Carcase			Index	
Dir	Dtrs	GL	Bwt	200	400	600	Mwt	Milk	SS	Cwt	EMA	Fat	TI	SRI
8.6	3.3	-2.7	-0.4	35	70	70	54	10	0.4	55	6.2	0.5	96	116
74%	57%	69%	85%	78%	76%	72%	60%	44%	70%	61%	48%	58%	(accuracy)	

## Reference Sire

### Incheoch Nickel P ET

Mother (bottom right), bred Black Gold Fort Knox stock sire at Anchor D, Alberta. Grandmother bred Black Gold Elevation stock sire at La Batte Simmentals. Bloodlines including Buzzard Hollow Doorn and the Kananaskis 4019 cow that has had a big impact on the Canadian herd..

We saw Canon (bottom left), in the flesh and knew immediately he was a sire we needed to use. Length, depth, thickness, structure and stock-bull appeal.



Sunny Valley Canon PP	Starwest Pol Blueprint
	SVS Trinity 53Z
MS BGS Flora 81Z	HEMR Warrior 4W
	MFI Flora 6144

Calv-Ease				Birth				Growth								Carcase			Index	
Dir	Dtrs	GL	Bwt	200	400	600	Mwt	Milk	SS	Cwt	EMA	Fat	TI	SRI						
4.1	-0.4	-0.4	-0.6	34	52	49	37		0.9	41	4.9	1.1	66	88						
53%	39%	56%	81%	35%	71%	70%	49%	%	67%	54%	40%	51%	(accuracy)							

## Lot 8 Incheoch Runrig P

UK 542191 204857  
born 19/04/24 Frame Score: 7.1  
744 kg 45 cm (14th August)

The first son of Niko to come to sale, Runrig is a solid, square-made bull with a great length of hip and a canny disposition.

Flora N1 (pictured with Runrig at foot as a 2yo heifer), is an easy-keeping young cow, a full embryo sister to Nickel (see reference sires).

Niko has a +10 for milk, but N1 is unproven.



Incheoch Niko PP	Kyleston Iceman P
	Incheoch Calypso K7 P
Incheoch Flora N1 P ET	Sunny Valley Canon PP
	MS BCS Flora 81Z

Calv-Ease				Birth				Growth						Carcase			Index	
Dir	Dtrs	GL	Bwt	200	400	600	Mwt	Milk	SS	Cwt	EMA	Fat	TI	SRI				
3.8	0.8	-1.2	-0.1	36	63	60	43	3	0.8	48	5.3	0.5	81	98				
46%	35%	55%	72%	67%	63%	60%	50%	27%	59%	48%	35%	42%	(accuracy)					

## Lot 9 Incheoch Roley PP

UK 542191 704792  
born 03/04/24 Frame Score: 7.5  
722 kg 39 cm (14th August)

Roley is a muscular bull with a real beefy stamp about him and plenty length. Homozygous polled with a 'herd-bull' head.

Dam calved him at 23mths and came forward a fortnight this year. Her sire, Joker, pictured below.



Incheoch Niko PP	Kyleston Iceman P
	Incheoch Calypso K7 P
I. Winnipeg N13 PP	Slievenagh Joker P
	Incheoch Winnipig I5 P

Calv-Ease				Birth				Growth								Carcase			Index	
Dir	Dtrs	GL	Bwt	200	400	600	Mwt	Milk	SS	Cwt	EMA	Fat	TI	SRI						
4.7	1.1	-2.2	0.7	34	69	75	81	5	0.3	52	4.6	0.3	88	108						
50%	40%	60%	74%	70%	66%	63%	52%	33%	62%	52%	41%	50%	(accuracy)							

**Lot 10 Incheoch Roxy PP**

UK 542191 204836  
born 14/04/24 Frame Score: 7.1  
786 kg 42 cm (14th August)

Roxy has a very easy-fleshing genotype and phenotype, coupled with a canny, easy-going nature.

Top 1% prediction for calving ease,  
birthweight and fat depth.

Mother calved at 24mths with a 366d interval over 5 calvings.



Incheoch Nickel P (ET)	Sunny Valley Canon PP MS BCS Flora 81Z
I. Winnipeg K3 P	Gibby's Real Deal PP Incheoch Winnipeg G1 P

Calv-Ease		Birth		Growth						Carcase			Index	
Dir	Dtrs	GL	Bwt	200	400	600	Mwt	Milk	SS	Cwt	EMA	Fat	TI	SRI
7.8	1.5	-1.7	-2.0	30	51	48	48	0	1.1	41	4.4	1.6	65	91
39%	33%	48%	74%	68%	67%	62%	50%	34%	68%	53%	42%	50%	(accuracy)	

**Lot 11 Incheoch Reno PP**

UK 542191 204787  
born 03/04/24 Frame Score: 7.5  
756 kg 38 cm (14th August)

Another Homozygous polled son of the Canadian embryo bull.

Dam calved at 24 months with a 368d interval in 3 calvings. Her first calf is shaping up among the pick of the 2yo calved heifers.

Great set of easy-calving figures with high fat for quicker, easier finishing.



Incheoch Nickel P (ET)	Sunny Valley Canon PP
	MS BCS Flora 81Z
I. Electra M11 PP	Dirnanean Apostle PP
	Woodhall Electra P (ET)

Calv-Ease		Birth		Growth						Carcase			Index	
Dir	Dtrs	GL	Bwt	200	400	600	Mwt	Milk	SS	Cwt	EMA	Fat	TI	SRI
3.1	1.1	0.0	-0.3	31	53	50	42	4	0.0	44	5.7	0.5	70	80
43%	36%	58%	74%	70%	68%	63%	50%	32%	67%	56%	43%	52%	(accuracy)	

**Lot 12 Incheoch Real Deal P**

UK 542191 504797  
born 06/04/24 Frame Score: 7.5  
734 kg 40 cm (14th August)

This bull has the 'Real Deal' stamp of wide hips, long spine and easy-doing low-to-the-ground dimension.

The Iceman bull in his pedigree reinforces his low birthweight, easy-calving figures.



Gibby's Real Deal PP	Gibby's Nicholas 302N
	Gibby's Nabriska 16N
Incheoch Meise L12 P	Kyleston Iceman P
	Incheoch Meise G5

Calv-Ease		Birth		Growth						Carcase			Index	
Dir	Dtrs	GL	Bwt	200	400	600	Mwt	Milk	SS	Cwt	EMA	Fat	TI	SRI
5.5	2.7	-3.0	-0.4	35	58	57	51	5	0.3	44	4.9	0.2	78	92
49%	47%	65%	76%	72%	71%	67%	58%	46%	70%	58%	47%	57%	(accuracy)	



## Reference Sire

## Incheoch Keystone PP

Top seller 2020 sale (semen retained), Keystone is still working at Montalt with John and Alix Ritchie. The most powerful Real Deal son we've seen, breeding power and structural integrity. Keystone sons were the powerhouse bulls in last year's sale, and a good place to look again, if you are looking for growth performance in a robust frame.



Gibby's Real Deal PP	Gibby's Nicholas 302N
	Gibby's Nabriska 16N
I. Polarine H3 P	Dirnanean Fivestar
	Dirnanean Sioux S10 P

Calv-Ease				Birth				Growth								Carcase				Index	
Dir	Dtrs	GL	Bwt	200	400	600	Mwt	Milk	SS	Cwt	EMA	Fat	TI	SRI							
-2.5	0.0	-0.5	3.5	43	81	76	72	8	1.3	52	4.5	0.8	91	104							
71%	56%	78%	86%	83%	82%	77%	64%	49%	75%	68%	54%	66%	(accuracy)								

## Reference Sire

## Clearwater Nitrous P

We are always on the lookout for a polled outcross bull, from a history of 2yo calves. Nitrous looked like the job when we found him and he just keeps getting better.

He is proving to be a very reliable bull to have around. He retains the muscling qualities and length of spine relative to height, of his Bavarian sire.



Booroola (Imp DE)	Barbarossa
	K09 Maja (by Hoeness)
Lopemedede F'Girl 2 P	Kilbride Farm Frontier P
	Lopemedede FunnyGirl P

Calv-Ease				Birth				Growth								Carcase			Index	
Dir	Dtrs	GL	Bwt	200	400	600	Mwt	Milk	SS	Cwt	EMA	Fat		TI	SRI					
0.4	2.8	-0.7	0.5	37	67	65	59	7	0.5	52	4.9	-0.6		86	96					
61%	42%	71%	85%	76%	72%	68%	51%	29%	47%	53%	34%	49%		(accuracy)						

## Lot 13 Inchisla Placido A758

UK 542191 104758  
born 22/03/24 Frame Score: 7.2  
804 kg 38 cm (14th Aug)

Placido's type is pretty close to what we are aiming for with Angus. He is clean shouldered and neat boned for easy calving, he has enough frame and carcase to leave calves that pay bills, and he has a structure and movement that promise a long, trouble-free working life.

When a 734kg BCS 3.5 cow brings in a 388kg calf, she gets a 53% weaning efficiency. That's what X157 did as a 1st calver with Placido.



Rawburn Loaded U670	Nichols Expectation C370
	Rawburn Lady Rose N636
Inchisla Pride X157	Tofts Jewro Eric T824
	Inchisla Pride V757

Calv-Ease		Birth		Growth						Carcase			Index	
Dir	Dtrs	GL	Bwt	200	400	600	Mwt	Milk	SS	Cwt	EMA	Fat	TI	SRI
3.6	3.7	-2.1	1.5	50	89	105	84	20	2.1	73	7.3	-0.4	46	64
46%	41%	63%	70%	68%	67%	62%	54%	52%	64%	56%	49%	56%	(accuracy)	

## Reference Sire Rawburn Loaded

I really liked the Nichols Farms program and cattle when I visited on Nuffield travels, and Loaded looked like a good way to access some of those genetics. Coming from a Berkley daughter, we had added confidence in his short gestation.

Loaded is a really impressive bull in the flesh—thick, square-made and carrying a lot of meat. Without being overly big framed he is leaving plenty performance when progeny step on the scales.



Nichols Expectation	Quaker Hill Rampage
	Nichols Bonnie Y292
Rawburn L'Rose L280	Te Mania Berkley B1
	Rawburn L'Rose L280

Calv-Ease		Birth		Growth						Carcase			Index	
Dir	Dtrs	GL	Bwt	200	400	600	Mwt	Milk	SS	Cwt	EMA	Fat	TI	SRI
5.5	5.2	-3.0	1.5	61	104	123	97	15	2.3	86	6.9	-1.9	54	77
83%	74%	93%	98%	96%	96%	90%	81%	81%	95%	85%	76%	86%	(accuracy)	

## Lot 14 Dirnanean Dante PP

UK 542191 404782  
born 01/04/24 Frame Score: 7.0  
708 kg 37 cm (14th Aug)

Dante is the strongest and fleshiest of the 3 Zion sons, with the boldest head. Yukon is a Drinkstone Panamar son that bulled over 60 cows at Berryfell in a season. We are very pleased with the daughters here. Myostatin: No Variants



First Calving	24mth	Feet	8
No Calvings	3	Locomotion	8
Calving Int	354 d	Udder	10
Cow to bull24	690 kg	Teats	9
Wean ratio	50%	FrameScore	7.5

Dirnanean Zion P	Dirnanean Senator P
	Dirnanean H23
Dirnanean A17 P	Dirnanean Yukon PP
	Dirnanean X5

Calv-Ease		Birth		Index	Growth		Carcase		Index	Maternal				Index	
Dir	Dtrs	GL	Bwt	CV	200	400	Musc	Fat	BV	Milk	Age1st	L/span	Int	MV	MPV
-0.9	-0.1	1.6	1.0	0	14	24	1.7	0.3	20	5	-0.17	0.3	4.1	20	19
60%	36%	52%	68%	60%	72%	68%	64%	36%	72%	44%	40%	36%	32%	38%	45%

## Lot 15 Dirnanean Darcy PP

UK 542191 404810  
born 10/04/24 Frame Score: 6.2  
672 kg 39 cm (14th Aug)

There are 15 cows in a full pedigree. Darcy's includes 11 we've owned, with 115 calving records between them. We have every confidence he will consistently breed functional, efficient and robust daughters. Myostatin: No Variants



First Calving	24mth	Feet	8
No Calvings	3	Locomotion	8
Calving Int	364 d	Udder	8
Cow to bull24	662 kg	Teats	8
Wean ratio	51%	FrameScore	6.8

Dirnanean Zion P	Dirnanean Senator P
	Dirnanean H23
Dirnanean A7 P	Dirnanean Yucatan P
	Dirnanean S3 P

Calv-Ease		Birth		Index	Growth		Carcase		Index	Maternal				Index	
Dir	Dtrs	GL	Bwt	CV	200	400	Musc	Fat	BV	Milk	Age1st	L/span	Int	MV	MPV
0.1	-0.1	1.1	0.1	1	12	19	1.3	0.3	19	3	-0.17	0.3	4.2	17	18
68%	37%	53%	68%	60%	73%	68%	64%	36%	72%	45%	41%	36%	32%	38%	46%

## Lot 16 Dirnanean Delaney PP

UK 542191 304774  
born 31/03/24 Frame Score: 5.2  
662 kg 38 cm (14th Aug)

Smallest framed of these 3 Zion sons and a good muscle pattern gives him a real robust look. Delaney's mother is a beautifully sweet cow with a lovely udder.



Myostatin: No Variants

First Calving	24mth	Feet	9
No Calvings	3	Locomotion	9
Calving Int	361 d	Udder	10
Cow to bull24	604 kg	Teats	10
Wean ratio	50%	FrameScore	5.3

Dirnanean Zion P	Dirnanean Senator P
	Dirnanean H23
Dirnanean A16 P	Dirnanean Yukon PP
	Dirnanean X12 P

Calv-Ease		Birth		Index	Growth		Carcase		Index	Maternal				Index	
Dir	Dtrs	GL	Bwt	CV	200	400	Musc	Fat	BV	Milk	Age1st	L/span	Int	MV	MPV
0.6	-0.1	0.6	-0.3	2	-1	4	-0.2	0.2	11	5	-0.13	0.4	3.4	19	18
60%	36%	52%	68%	60%	72%	68%	64%	36%	72%	44%	40%	36%	32%	38%	45%

## Lot 17 Dirnanean Dawson PP

UK 542191 504818  
born 11/04/24 Frame Score: 7.3  
672 kg 42 cm (14th Aug)

The pick of the Alves sons, Dawson spent 3 weeks with stud Luing cows this summer. He is a bigger framed type than the other 3, but more moderate than his sire.



Myostatin: No Variants

First Calving	24mth	Feet	9
No Calvings	6	Locomotion	10
Calving Int	362 d	Udder	10
Cow to bull24	662 kg	Teats	10
Wean ratio	51%	FrameScore	6.1

C'darroch Alves PP	Kirkland Yorkie
	Craigdarroch K24
Dirnanean X6 P	Dirnanean Vincent P
	Dirnanean R10x P

Calv-Ease		Birth		Index	Growth		Carcase		Index	Maternal				Index	
Dir	Dtrs	GL	Bwt	CV	200	400	Musc	Fat	BV	Milk	Age1st	L/span	Int	MV	MPV
0.3	0.1	0.5	0.8	2	5	11	1.0	0.1	13	0	-0.05	0.3	0.8	8	11
59%	32%	49%	67%	58%	72%	67%	62%	29%	71%	38%	38%	33%	29%	35%	43%



## Luing Bull Picture Gallery



Dante's mother—A17 P (above)



Dirnanean Yukon PP  
Maternal Grandsire: Dante and  
Delaney. Pictured at 16mths.



Darcy's mother—A7 P (above)



Dirnanean Yucatan P (at 16mths)  
sire of Darcy's mother.



Delaney's mother—A16 P (above & r)



Dawson's mother—X6P  
(right & above winter '24/25)





## Reference Sire Dirnanean Zion P

We have a lot of confidence in Zion, with 14 half sisters in the herd, 9 of them in the stud cows. Between the 2 Coll daughters in his pedigree (H9 and H23), they have calved 27 times.

Easy-fleshing, trouble-free, fertile cows with good temperament and structural soundness for longevity is kinda what this game's about, and Zion nails it.



First Calving	25mth	Feet	10
No Calvings	14	Locomotion	9
Calving Int	365 d	Udder	9
Cow to bull23		Teats	9
Wean ratio		FrameScore	6

Dirnanean Senator P	Berryfell Landmark P
	Dirnanean H9
Dirnanean H23	Luing Coll
	Dirnanean D23

Calv-Ease				Birth		Index	Growth		Carcase		Index	Maternal				Index	
Dir	Dtrs	GL	Bwt	CV	200	400	Musc	Fat	BV	Milk	Age1st	L/span	Int	MV	MPV		
0.4	-0.3	0.5	-0.6	2	0	2	-0.1	0.4	12	6	-0.17	0.3	6.0	18	17		
86%	55%	80%	91%	86%	93%	91%	88%	46%	93%	65%	61%	51%	47%	56%	66%		

## Reference Sire

### Craigdarroch Alves PP

Alves was a purchase at Castle Douglas, where he measured in at a Frame Score 7.2 with a 45cm scrotal.

He has bred a bit more frame than we were looking for, but added a dimension of width and muscularity.

Another step towards polling the herd.



First Calving	37mth	Feet	8
No Calvings	14	Locomotion	9
Calving Int	366 d	Udder	9
Cow to bull23		Teats	9
Wean ratio		FrameScore	

Kirkland Yorkie P	Craigdarroch Wren
	Kirkland W99
Craigdarroch K24	Clunie F3
	Craigdarroch G42

Calv-Ease				Birth		Index	Growth		Carcase		Index	Maternal				Index	
Dir	Dtrs	GL	Bwt	CV	200	400	Musc	Fat	BV	Milk	Age1st	L/span	Int	MV	MPV		
0.6	0.5	0.5	0.5	2	7	10	0.9	0.1	10	-2	-0.07	0.2	0.6	8	10		
73%	29%	53%	79%	70%	83%	77%	74%	27%	82%	30%	50%	40%	36%	41%	50%		

# HOWDEN ADVERT

# PENTLAND AUCTIONS

## Bull Nutrition

Bull fertility and longevity have always been the key focus for us here at Incheoch and our approach to nutrition is designed to support that.

We've worked with Harbro for a number of years now; they understand what we're trying to achieve and design rations that make the best of what we grow on farm, combined with a few key quality products that fit our system.

Together we have come up with some diet parameters —minimum 50% forage on a DM basis, and maximum 20% Starch for bull rations.

The bulls on offer today have a steady life-time growth pattern of around 1.5 kgs per day.

- There is no creep fed, so that maternal ability can be properly gauged.
- Milk, Grass, Grass-silage and Grass again have been the basis of their diet.
- Supplements in first winter were bruised oats, distiller's grains and 1 kg of Buttercup Calf Rearer nuts.
- Supplement over this summer has been 2 kg per day of Calf Rearer nuts.

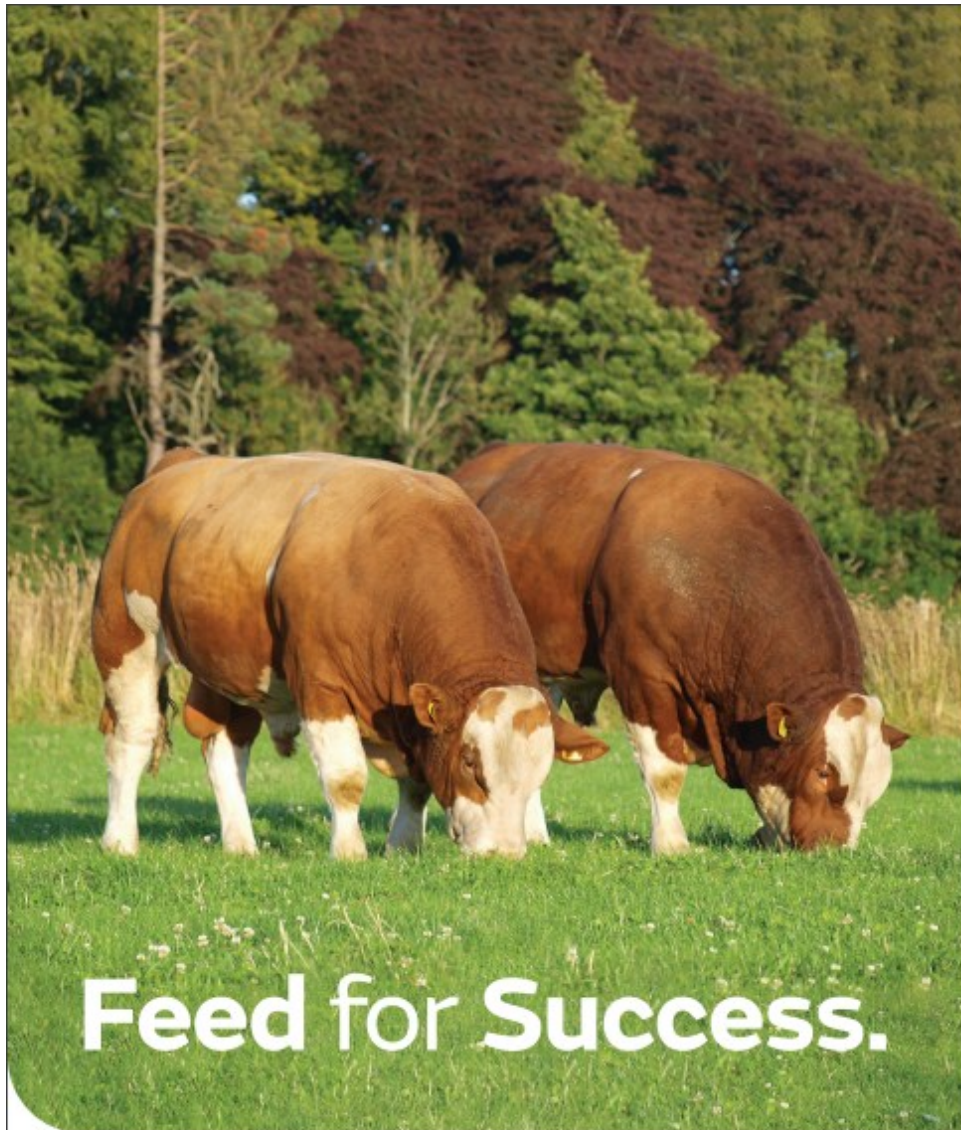


## Wintering Option Available

It's fairly easy to winter a young bull to be fit to go to cows as a 2yo — it's another thing having him in sale condition, with a coat of hair and a layer of fat. Help us treat your young herd-sire's rumen and liver with care and buy early.

We can keep your bull at Incheoch until you are ready to take him, free of charge until the end of September, or further through the winter on a feed cost only. Keep payable at uplift at £25/week. Bulls will be looked after to the best of our ability and will remain at our risk when here. All bulls must be collected by end Feb.

Or why not get him home to acclimatise, maybe give him a turn with some cull cows and get him used to the farm? It's good forward planning to have a tested, farm-fit 2-year-old bull secured and ready for the breeding season.



# Feed for Success.

Working in partnership with Incheoch Farm to create a tailored ration that promotes longevity, health and fertility.



[www.harbro.co.uk](http://www.harbro.co.uk) [farming@harbro.co.uk](mailto:farming@harbro.co.uk)

**Harbro**  
SPECIALIST FEEDS FOR RUMINANTS



**Messrs Finlay McGowan**

Incheoch Farms Alyth Blairgowrie Perthshire **PH11 8HS**

Email: [neil@incheochfarm.co.uk](mailto:neil@incheochfarm.co.uk)

**Finlay & Clare** 01575 560236

**Neil & Debbie** 01828 633652

**N: 07788 100010 D: 07801 783988**

**Jim Smith** 07934 424633

**Pentland Auctions** 07547 369295

*These bulls have been very ably tended to by Jim Smith, please ask Jim, Finlay or Neil for any information or help in selecting a bull, and they will be happy to take you to see bulls' mothers.*

*Thank you for supporting our 8th bull sale.*

*We want to make selecting and securing your bull as easy and affordable as possible. We will keep reviewing the sale system—so will welcome your feedback.*

*Please give us a call or stop by for a chat and look around the herd —help us get our sale and breeding programme in line with your goals.*

*From all the team at Incheoch.*

