



WORKING GENES

5TH BULL SALE 2022

INCHEOCH

THURS 1ST SEPTEMBER 4PM
ON-FARM SALE – ON-LINE BIDDING



10 SIMMENTAL - 3 ANGUS - 4 LUING



Viewing Days:
Thursday 25th August 3pm
Sunday 28th August 3pm
Or call to arrange a viewing.
Videos at www.incheochfarm.co.uk



MATERNAL GENETICS
Paddock Reared
FOR FERTILITY AND LONGEVITY

Functional Efficient Robust

Why a **WORKING GENES** Bull Sale?

We understand that fertility in a functional, robust cow is the key to an efficient suckler herd. Our breeding program is designed to promote those traits—200 pedigree, recorded cows managed in commercial conditions, with a 2yo calving and strict culling policy.

These bulls have been developed on a low intensive diet to encourage fertility and longevity. Our entire year group of Simmental, Angus and Luing bulls are offered—reared the way we would want them.

'Functional, fertile cattle, structurally sound for longevity, and with good temperament will never go out of style'



The Incheoch **SIMMENTAL** herd of 40 - mostly polled - cows is based on the most functional cow families from the previous 'Dirnanean' herd. Calving ease, structural soundness for longevity and a calm, maternal character have always been a priority—we've turned up the pressure on lower mature weight, ease of fleshing and fertility in order to find you sires that will leave lower maintenance, regular calving, long lasting daughters ...and a steer with do-ability and a good top.

Inchisla **ANGUS** are bred to provide a short-gestation, calving-ease sire and leave easy-finished grass-type cattle. Clare has produced us bulls particularly suited to go to yearling heifers, which have left calves with performance hard to fault.

The Dirnanean **LUING** cows have been the backbone of our business for over 40 years. Fertile, hardy, easy to manage, fleshing ability from 2nd quality forage, and a temperament that makes working with cattle a pleasure. Our pure Luing steers can put a lot of weight on at grass and finish before their second winter. More cattlemen are turning to the Luing bull for an injection of no-nonsense cow-traits into their herd.



Welcome to the 5th **WORKING GENES** Bull Sale

Bulls (15-19 months)
10 Simmental, 3 Angus, 4 Luings

On-line, silent auction by Yourbid — ends 4pm 1st September.

Come to the Sale to see bulls in their paddocks and bid without the pressure of the auction-ring.

Videos coming, and viewing days:
Thursday 25th August 3-8pm Sunday 28th August 3-8pm



“Robust bulls, bred from Functional, Efficient cows has been our goal for many years now. We run just over 200 pedigree, performance recorded cows, and select hard for fertility, structural soundness, good temperaments and easy calving. We find that easy-fleshed, medium framed cattle with a bit of maternal character tend to be the ones who tick the boxes — and we think the bulls we have on offer today can transfer these traits to your herd.

These bulls were not creep fed, had paddock exercise through the winter and have been summered at grass. Our non-intensive system of developing bulls lets you pick out the ones that can put on flesh from forage.

This group of bulls have been halter broken but not led, and their feet are shown untrimmed except Lots 6 and 8.”

The McGowan family



Terms & Conditions

- Bidding in £ pounds.
- The sale is being held with the help of Pentland Auctions, but purchases will be invoiced by Messrs Finlay McGowan.
- Bulls will be sold with the usual 6 month breeding warranty given from the date they leave Incheoch.

Collection

- We don't expect bulls to be uplifted on sale day—they will be rung before collection and we will do what we can to help delivery where possible.
- Bulls have not been semen tested prior to sale because they are running in large batches and we are trying to manage hormone levels!! They are sold subject to passing a test here before they leave.
- All stock can be left at Incheoch, at our risk, until the end of September. Bulls can be kept longer by separate agreement under a wintering option at £25/week.

Herd Health

The health and fertility of the Incheoch herd has always been a priority, being the bedrock of profitable cattle production. As well as controlling the 'Health scheme' diseases, the herd has enjoyed general good health and excellent fertility. Respiratory disease and scours, along with most of the common cattle ailments are rare at Incheoch and antibiotic use is minimal.

Johne Disease: The herd is a member of the Premium Cattle Health Scheme run by SAC and has been pro-actively engaged in controlling Johnes Disease, over and above the requirements of the scheme, for 24 years. There have been no clinical cases within the herd for many years but one positive last year put the herd back to a risk level 3. In the last 7 years a total of 1549 individual blood tests have been carried out with only 5 positives. None of the animals presented for sale have a history of Johnes in their families.

BVD: The herd has been fully accredited for 16 years and is additionally vaccinated. All animals presented for sale are individually vaccinated and accredited.

Leptospirosis: There is no history of this disease in the herd and it is now policy not to vaccinate the herd. However, sale bulls have been vaccinated for the purchasers convenience.

IBR: Although not accredited the herd is believed to be free of IBR.

If you have any questions regarding the health status please feel free to speak to Neil or call me at Thrums Vet Group on 01575 572643.

Graeme Richardson

Catalogue Details: We have tried to supply as much relevant information in the catalogue as we can, and present it as clearly as possible.

EBVs are shown in the format shown below. Please be aware that the EBVs for different breeds cannot be directly compared. For convenience, a colour code system highlights where the ebv falls within the wider breed genetic pool:

- Top 10%
- Top 25%
- Average+
- Lower 25% (*Mwt only*)

Index of relevant traits for:
 TI = Bull to be used in terminal herd
 SRI = for use in Self Replacing herd with proportion of daughters kept.

Calving Ease traits:
 Dir = Direct Calving Ease of calves sired by the bull
 Dtrs = Daughter's Calving Ease (how easily his daughters give birth).
 Postive Numbers Favourable

Carcase Traits (from Ultrasound Scanning):
 Cwt = Carcase Weight
 EMA = Eye Muscle Area
 Fat = Positve for More Fat.

Gestation Length (negative for shorter gestation).
 Birthweight (lower number for smaller birth-weighths).

Maternal Traits:
 Milk is measure of Maternal influence on calf growth to 200days.
 SS = Scrotal Circumference.

Gibby's Real Deal

Calv-Ease		Birth		Growth							Carcase			Index	
Dir	Dtrs	GL	Bwt	200	400	600	Mwt	Milk	SS	Cwt	EMA	Fat	TI	SRI	
2.4	3.0	-1.4	0.9	43	63	65	52	8	0.3	49	4.4	0.9	77	93	
79%	70%	84%	91%	87%	87%	83%	75%	69%	78%	73%	55%	70%	(accuracy)		

Growth Traits:
 200, 400 & 600 day weights
 Mwt = Mature Weight (we have highlighted grey the bulls with EBVs in the **lower 25%** of the breed for Mature Weight).
 Higher numbers, more kgs.

Accuracy represents the reliability of the EBV prediction—it reflects the amount of data that has been gathered on the individual and the members of it's family. Over 70% would give a high 'confidence level' in the EBV (often only achieved with progeny measured), and lower than 30% would be low confidence.

Lot 1 Incheoch Maori P

UK 542191 404145
 born 27/01/21
 898 kg 43 cm (27th Jul)

Maori has always been a standout calf—but then again, his mother always turns out a good one. She is pictured below with a full sister to Maori at foot, who grew up to be the mother of Lot 8.



His EBVs are on the button for a maternal sire with a bit of grunt. Great foot structure and polled into the bargain.



Gibby's Real Deal PP	Gibby's Nicholas 302N
	Gibby's Nabriska 16N
D. Redstar D23 P	Dirnanean Apostle PP
	Dirnanean Kelly

Calv-Ease		Birth		Growth				Carcase				Index		
Dir	Dtrs	GL	Bwt	200	400	600	Mwt	Milk	SS	Cwt	EMA	Fat	TI	SRI
-0.8	0.3	-0.4	2.8	45	75	74	65	9	0.9	56	5.2	0.2	94	104
51%	48%	64%	75%	71%	70%	66%	55%	49%	69%	57%	47%	55%	(accuracy)	

Lot 2 Incheoch Minstrel PP

UK 542191 304242
 born 31/03/21
 764 kg 44 cm (27th Jul)

Homozygous polled, really thick and fleshy—Minstrel gets a tick in every box on the EBV chart—excelling in weaning weight and milk, from a low cow weight.



Dam bred Lincoln (pictured) –lot 1 in last year's sale.



Gibby's Real Deal PP	Gibby's Nicholas 302N
	Gibby's Nabriska 16N
D. Redstar G30 P	Dirnanean Apostle PP
	D. Wandilla

Calv-Ease		Birth		Growth				Carcase				Index		
Dir	Dtrs	GL	Bwt	200	400	600	Mwt	Milk	SS	Cwt	EMA	Fat	TI	SRI
-0.3	0.7	-0.2	2.5	42	64	67	56	10	0.8	49	5.0	0.2	83	96
50%	46%	65%	76%	72%	71%	67%	57%	47%	69%	58%	46%	56%	(accuracy)	

Lot 3 Incheoch Mungo P

UK 542191 604182
born 16/03/21
780 kg 39.5 cm (27th Jul)

Mungo is a full brother to Fontana - stock bull here who left fantastic daughters with perfect udder and feet. We sold him in a moment of weakness and he is still working well for Sean MacDonald at Torgorm, Dingwall.



Mungo is a robust type with great thickness. Dam B7 is pictured.



Gibby's Real Deal PP	Gibby's Nicholas 302N
	Gibby's Nabriska 16N
Dirnanean Bali B7	Halenook Vargner
	D. Victoria V15

Calv-Ease		Birth		Growth				Carcase				Index		
Dir	Dtrs	GL	Bwt	200	400	600	Mwt	Milk	SS	Cwt	EMA	Fat	TI	SRI
1.8	2.0	-0.5	2.5	37	57	66	68	6	1.3	42	3.6	0.7	68	91
53%	49%	64%	75%	72%	71%	67%	55%	49%	69%	58%	47%	56%	(accuracy)	

Lot 4 Incheoch Magnus PP

UK 542191 704281
born 15/04/21
730 kg 39.5 cm (27th Jul)

Homozygous polled, Magnus is full brother to Hennessy (working with Ian McKie at Lanton), as well as two of the best cows in our herd.



Real Deal has become our 'go-to bull' for fixing the maternal, correct, easy-doing type that we are striving for and Apostle daughters are proving to be long-lasting, functional cows.

Gibby's Real Deal PP	Gibby's Nicholas 302N
	Gibby's Nabriska 16N
D. Lightning D6 P	Dirnanean Apostle PP
	D. Winnie W7

Calv-Ease		Birth		Growth				Carcase				Index		
Dir	Dtrs	GL	Bwt	200	400	600	Mwt	Milk	SS	Cwt	EMA	Fat	TI	SRI
-0.2	1.4	-0.9	1.2	37	55	59	44	10	0.9	42	4.7	0.5	68	83
52%	49%	64%	76%	72%	71%	67%	58%	50%	69%	59%	47%	57%	(accuracy)	

Lot 5 Incheoch Major P

UK 542191 104184
 born 17/03/21
 886 kg 39 cm (27th Jul)

Major is a power of a bull with real correctness and character.

Out of a fleshy, deep Fontana daughter who we consider one of our best cows (pictured).



Slievenagh Joker P	Kilbride Farm Glenhead P
	Slievenagh Whitney
Incheoch Grizel I12 P	Dirnanean Fontana P
	D. Grizel D11 P

Calv-Ease		Birth		Growth						Carcase			Index	
Dir	Dtrs	GL	Bwt	200	400	600	Mwt	Milk	SS	Cwt	EMA	Fat	TI	SRI
0.2	0.0	0.4	3.7	45	90	91	95	8	0.7	66	5.1	0.8	106	121
42%	38%	51%	74%	68%	67%	63%	51%	36%	67%	55%	44%	53%	(accuracy)	

Lot 6 Incheoch Murphy P

UK 542191 604196
 born 20/03/21
 816 kg 43 cm (27th Jul)

These 3 Joker sons from Fontana daughters have been neck and neck all along, with Murphy the pick through much of the winter.

His mother first calved at 24 months and has an interval of 355 days in 4 calvings, all unassisted. With the 2nd top calf wt/cow wt at weaning and a near perfect udder and teat score – we are excited about her future in the herd.



Slievenagh Joker P	Kilbride Farm Glenhead P
	Slievenagh Whitney
Incheoch Meise I6	Dirnanean Fontana P
	D. Meise G10 P

Calv-Ease		Birth		Growth						Carcase			Index	
Dir	Dtrs	GL	Bwt	200	400	600	Mwt	Milk	SS	Cwt	EMA	Fat	TI	SRI
0.8	0.6	0.0	3.1	42	78	80	75	11	0.8	58	5.1	0.3	98	115
42%	37%	61%	74%	70%	69%	64%	51%	36%	67%	55%	44%	53%	(accuracy)	

Lot 7 Incheoch Mayo PP

UK 542191 304277
born 13/04/21
790 kg 40 cm (27th Jul)

Homozygous Polled, with top performance figures, positive fat and good, hard feet –bulls like Mayo don't grown on trees.



Fontana (pictured below) has left an outstanding group of young cows and is maternal grand sire to this group of 3 Joker sons.



Slievenagh Joker P	Kilbride Farm Glenhead P
	Slievenagh Whitney
Incheoch Girlie I7 P	Dirnanean Fontana P
	D. Girlie F14T

Calv-Ease		Birth		Growth						Carcase			Index	
Dir	Dtrs	GL	Bwt	200	400	600	Mwt	Milk	SS	Cwt	EMA	Fat	TI	SRI
-0.6	1.6	0.7	4.0	46	90	91	94	7	0.4	68	5.3	0.5	111	124
41%	36%	60%	74%	70%	69%	64%	51%	36%	68%	55%	44%	53%	(accuracy)	

Reference Sire

Slievenagh Joker P

We thought Joker was a bull of the right dimension and muscle-pattern to suit our program—not too tall, but plenty depth and thickness. Together with a decent fat scan and the polled factor, there's not many like this fella around.



With a first crop of calves like this, Joker has now hung his coat on the Senior Stock bull peg.

Kilbride F. Glenhead P	Sneumgaard Emperor PP
	Kilbride Farm Jolly 12D
Slievenagh Whitney	Cleenagh Flasher
	Woodhall Riva

Calv-Ease		Birth		Growth						Carcase			Index	
Dir	Dtrs	GL	Bwt	200	400	600	Mwt	Milk	SS	Cwt	EMA	Fat	TI	SRI
-0.5	0.5	0.5	4.3	46	98	101	106	6	0.2	72	5.0	-0.1	119	129
64%	55%	73%	86%	81%	79%	74%	57%	46%	72%	64%	50%	59%	(accuracy)	

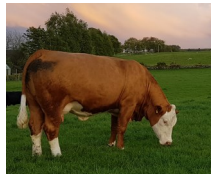
Lot 8 Incheoch MacLeod P

UK 542191 604231
 born 27/03/21
 752 kg 40 cm (27th Jul)

Red, fleshy and a really canny nature. MacLeod has a full hand of easy-calving figures and a fat depth well inside the top 1% of the breed. If you want easy-calving, easy-going and easy-fleshing cattle, MacLeod ticks all boxes.



His mother (pictured) is one of our top cows and is full sister to Maori (Lot 1).



Kyleston Iceman P	Keeldrum Eclipse P
	Kyleston Ruffles F10
Incheoch Redstar H4 P	Gibby's Real Deal PP
	D. Redstar D23 P

Calv-Ease		Birth		Growth				Carcase				Index		
Dir	Dtrs	GL	Bwt	200	400	600	Mwt	Milk	SS	Cwt	EMA	Fat	TI	SRI
4.3	-0.1	-0.9	1.6	37	54	58	55	9	0.1	42	4.3	1.5	69	84
40%	35%	53%	74%	69%	69%	64%	51%	33%	69%	56%	45%	55%	(accuracy)	

Lot 9 Incheoch Morgan PP

UK 542191 304256
 born 06/04/21
 732 kg 38 cm (27th Jul)

Morgan is a moderate made bull with a nice balance of performance, calving ease, shape and maternal qualities—making him an ideal all-rounder. ...and he's Homozygous polled.



First calved at 23 months, J12 has an interval of 344 days over 3 calvings—she is turning into a really promising young cow.

Kyleston Iceman P	Keeldrum Eclipse P
	Kyleston Ruffles F10
Incheoch Fiona J12 P	Dirnanean Druid P
	Woodhall Electra P

Calv-Ease		Birth		Growth				Carcase				Index		
Dir	Dtrs	GL	Bwt	200	400	600	Mwt	Milk	SS	Cwt	EMA	Fat	TI	SRI
2.8	0.5	0.4	1.7	32	72	71	65	9	0.8	52	5.5	0.6	89	104
36%	31%	58%	74%	70%	69%	64%	48%	31%	67%	55%	44%	53%	(accuracy)	

Lot 10 Incheoch Marco

UK 542191 404320
born 05/05/21
746 kg 41.5 cm (27th Jul)

Marco is the youngest bull in the group. Easy calving, with the lowest birthweight figure.

Dam bred Lucius (pictured), to Quixwood last year. She has a 358d interval in 9 calvings after 1st calving at 26 months.



Kyleston Iceman P	Keeldrum Eclipse P
	Kyleston Ruffles F10
D. Grizel D11 P	Dirnanean Apostle PP
	Dirnanean Lucille

Calv-Ease		Birth		Growth				Carcase				Index		
Dir	Dtrs	GL	Bwt	200	400	600	Mwt	Milk	SS	Cwt	EMA	Fat	TI	SRI
6.0	-1.2	-0.5	0.5	32	64	63	68	10	0.1	50	4.5	0.8	79	89
44%	42%	63%	75%	72%	70%	66%	54%	40%	69%	57%	46%	54%	(accuracy)	

Reference Sire

Kyleston Iceman P

Our search for the right polled genetics with fleshing ability and good female lines takes us all over the world, but we found Iceman half way to Alyth!

He has phenomenal calving ease and temperament, great shape and holds flesh extremely well.

Eclipse (maternal brother to Clío), has bred a consistent line of fleshy, good bulls for Stuart Knox, and we were pleased to get a grandson of Comrade back.



Keeldrum Eclipse P	Pode Hole Warrant
	Keeldrum Tzigane W3 P
Kyleston Ruffles F10	Dirnanean Comrade
	Kyleston Ruffles R7

Calv-Ease		Birth		Growth				Carcase				Index		
Dir	Dtrs	GL	Bwt	200	400	600	Mwt	Milk	SS	Cwt	EMA	Fat	TI	SRI
6.9	0.2	-1.5	1.1	31	58	61	67	7	-0.2	43	3.6	0.9	72	84
54%	44%	73%	86%	82%	82%	77%	60%	32%	75%	68%	52%	65%	(accuracy)	

Lot 11 Inchisla John Eric X151

UK 542191 304151
born 04/03/21
726 kg 40 cm (27th Jul)

Evor is an AI sire we have used with great success and is a trait leader for calving ease and gestation length. His retained son, Pheonix (pictured below), sired both these bulls and has been used with great success over Luing cows.



Calving Ease and short gestation with decent performance and easy-finishing is what we are looking for in an Angus sire and this bull covers it all. Born a twin.

Inchisla Phoenix U552	Oakchurch Evor N123
	Inchisla Pride N630
Inchisla Jasmine S125	Oakchurch Evor N123
	Inchisla Jamine E'ca P853

Calv-Ease		Birth		Growth						Carcase			Index	
Dir	Dtrs	GL	Bwt	200	400	600	Mwt	Milk	SS	Cwt	EMA	Fat	TI	SRI
3.0	0.9	-1.7	1.9	43	78	93	77	14	1.2	65	4.9	-0.5	38	51
35%	31%	43%	68%	53%	51%	50%	44%	34%	35%	36%	29%	33%	(accuracy)	

Lot 12 Inchisla Earl X153

UK 542191 504153
born 23/03/21
730 kg 38.5 cm (27th Jul)

Similarly bred with a bit more stretch, Earl carries the stamp of his sire (below).



Inchisla Pheonix (sire)



Inchisla Phoenix U552	Oakchurch Evor N123
	Inchisla Pride N630
Inchisla Elsie L241	Nightingale Ploughman
	Inchisla Elsie E137

Calv-Ease		Birth		Growth						Carcase			Index	
Dir	Dtrs	GL	Bwt	200	400	600	Mwt	Milk	SS	Cwt	EMA	Fat	TI	SRI
0.8	3.1	-0.7	3.2	46	78	91	75	10	0.3	62	4.2	-0.6	36	48
36%	32%	45%	67%	60%	58%	55%	46%	37%	60%	45%	37%	41%	(accuracy)	

Lot 13 Inchisla Peadar X158

UK 542191 304158
born 27/05/21
636 kg 37 cm (27th Jul)

Paedar has been running with heifers. The Tofts bull (pictured below), was selected to put to heifers and proved really easy calving.

T128 has bred 2 of the better sale bulls already from 4 calving s @354d interval, 1st calved 24 months – including Pilot to M. Jordon, Alnwick.



Tofts Jewro Eric T824	Donaumoos Lord Zorro
	Tofts Jewel Erica R480
Inchisla Pride T128	Oakchurch Evor N123
	Inchisla Pride N630

Calv-Ease		Birth		Growth						Carcase			Index	
Dir	Dtrs	GL	Bwt	200	400	600	Mwt	Milk	SS	Cwt	EMA	Fat	TI	SRI
1.5	1.6	-0.7	3.0	46	80	99	95	12	1.5	65	4.8	-0.9	39	53
33%	29%	43%	53%	49%	47%	45%	40%	35%	43%	39%	32%	37%	(accuracy)	

Reference Sire

Dirnanean Yucatan P

We consider N10 to be the kind of cow to build a herd around, so we have used 2 sons, and a third is working in Switzerland. Yucatan sold to the Mitchell family at Tullymurdoch.



First Calving	25 mth	Feet	9
No Calvings	10	Locomotion	9
Calving Int	361d	Udder	10
Cow to bull	774 kg	Teats	10
Frame Score	6		

Drinkstone Panamar P	Buckhom Kramer
	Drinkstone J445 P
Dirnanean N10 P	Luig Justice
	Dirnanean G2 P

Calv-Ease		Birth		Index	Growth		Carcase		Index	Maternal			Index		
Dir	Dtrs	GL	Bwt	CV	200	400	Musc	Fat	BV	Milk	Age1st	L/span	Int	MV	MPV
-2	0.3	3.2	2.4	-3	30	45	3.8	0.2	29	-3	-0.07	0.4	0	9	8
69%	43%	73%	78%	74%	78%	74%	72%	42%	78%	55%	53%	45%	39%	48%	59%

Lot 14 Dirnanean Adonis P

UK 542191 404292
born 20/04/21 Frame Score: 6.6
700 kg 39 cm (27th Jul)

S15 is one of my all time favourite cows – she stands out as a sweet, deep, feminine cow in the paddock and she cuts to the top of any spreadsheet I’ve worked too – never assisted and consistently top wean%. EBVs give a nice balance of beef & maternal traits. Myostatin: No Variants



First Calving	24mth	Feet	9
No Calvings	7	Locomotion	9
Calving Int	361 d	Udder	7
Cow to bull21	696kg	Teats	8
Wean ratio	42%	FrameScore	6

Drinkstone Panamar P	Buckholm Kramer
	Drinkstone J455 P
Dirnanean S15 P	Merkland Nugget P
	Dirnanean M14

Calv-Ease		Birth		Index	Growth				Carcase		Index	Maternal				Index	
Dir	Dtrs	GL	Bwt	CV	200	400	Musc	Fat	BV	Milk	Age1st	L/span	Int	MV	MPV		
-0.8	0.1	2.4	0.8	-1	13	17	1.6	0.2	18	0	-0.5	0.5	-0.4	13	9		
62%	41%	59%	71%	64%	75%	71%	67%	42%	74%	54%	45%	45%	38%	47%	56%		

Lot 15 Dirnanean Abel P

UK 542191 204227
born 27/03/21 Frame Score: 6.3
670 kg 36 cm (27th Jul)

J18 bred Monarch (Commonside) and Yukon (Berryfell) among 12 calvings @368day interval. N10 bred 3 sale bulls and is still going with 10 @361 days. Plenty cow productivity here! Myostatin: No Variants



First Calving	25mth	Feet	7
No Calvings	8	Locomotion	8
Calving Int	359 d	Udder	9
Cow to bull21	660kg	Teats	8
Wean ratio	49%	FrameScore	8

Dirnanean Yucatan P	Drinkstone Panamar P
	Dirnanean N10 P
Dirnanean R1 P	Luing Lawman
	Dirnanean J18 P

Calv-Ease		Birth		Index	Growth				Carcase		Index	Maternal				Index	
Dir	Dtrs	GL	Bwt	CV	200	400	Musc	Fat	BV	Milk	Age1st	L/span	Int	MV	MPV		
-2.6	0.3	1.3	1.6	-1	16	27	1.9	0.1	20	0	-0.08	0.6	0.6	16	14		
55%	39%	53%	67%	58%	71%	66%	62%	32%	71%	46%	42%	37%	32%	40%	49%		

Lot 16 Dirnanean Anchor

UK 542191 204234
born 28/03/21 Frame Score: 6.2
726 kg 41.5 cm (27th Jul)

Anchor's grannies both have 10 calvings under their belt – N8 bred Waterloo, sold to Rob Wainwright on Coll. She stamped strength and beefiness in this cow-line - steers won't be a by-product with this bull!

Myostatin: No Variants



First Calving	26mth	Feet	10
No Calvings	5	Locomotion	10
Calving Int	356 d	Udder	10
Cow to bull21	670kg	Teats	10
Wean ratio	48%	FrameScore	7

Dirnanean Yucatan P	Drinkstone Panamar P
	Dirnanean N10 P
Dirnanean V4	Berryfell Landmark P
	Dirnanean N8

Calv-Ease		Birth		Index	Growth				Carcase		Index	Maternal				Index	
Dir	Dtrs	GL	Bwt	CV	200	400	Musc	Fat	BV	Milk	Age1st	L/span	Int	MV	MPV		
-1.4	0.1	1.2	1.5	0	28	38	3.3	0.5	23	-4	-0.09	0.6	-0.5	12	16		
54%	38%	52%	67%	58%	71%	66%	63%	41%	70%	45%	40%	37%	32%	39%	48%		

Lot 17 Dirnanean Apollo

UK 542191 104219
born 25/03/21 Frame Score: 5.7
678 kg 39 cm (27th Jul)

M85 bred Merkland Nugget. This dam line are particularly easy-going and easy-doing. Senator daughters are a correct, productive group of cows.

Myostatin: No Variants



First Calving	24mth	Feet	9
No Calvings	5	Locomotion	9
Calving Int	363 d	Udder	9
Cow to bull21	620kg	Teats	9
Wean ratio	52%	FrameScore	6

Dirnanean Yucatan P	Drinkstone Panamar P
	Dirnanean N10 P
Dirnanean V20 P	Dirnanean Senator P
	Merkland Annie M85 P

Calv-Ease		Birth		Index	Growth				Carcase		Index	Maternal				Index	
Dir	Dtrs	GL	Bwt	CV	200	400	Musc	Fat	BV	Milk	Age1st	L/span	Int	MV	MPV		
-1.4	-0.1	2.3	1.7	-1	18	25	2.2	0.6	18	0	-0.06	0.6	0	13	12		
54%	36%	52%	66%	57%	71%	66%	62%	41%	70%	44%	36%	35%	30%	36%	47%		

Lot 14

Dam: S15 (right) 8 years old
Sire: Panamar (below at 9 years)



Lot 15

Dam: R1 (right) 9 years old
Sire: Yucatan (his mother pictured below).



Lot 16

Dam: V4 (right) 6 yrs.
Sire: Yucatan



Lot 17

Dam: V20 (right) 6yrs.
Sire: Yucatan



Sim-Luing heifers available privately:
in-calf and free of the bull
2020 born heifers, BVD and Lepto vaccinated

In-calf heifers running with Inchisla Eddie (Angus) 7th May-28th June



Pentland
Livestock



& Auctions Limited



PROCUREMENT, AUCTION AND VALUATION SERVICES



CONDUCTING REGULAR ONLINE AUCTIONS
OF VEHICLES, MACHINERY, SMALL TOOLS, ANTIQUES & COLLECTABLES
ALSO FARM DISPERSAL & OTHER SALES CONDUCTED LIVE ONSITE
HILLHEAD BUSINESS PARK, CORTACHY ROAD, KIRRIEMUIR, DD8 4PB

FOR A FIRST CLASS SERVICE CONTACT
GRAHAM OR FIONA BURKE

Tel: 07547 369 295 or Email: graham@pentlandlivestock.co.uk
Please visit our up-to-date website at www.pentlandlivestock.co.uk



Have Gavel Will Travel!



Bull Nutrition

Bull fertility and longevity have always been the key focus for us here at Incheoch and our approach to nutrition is designed to support that.

We've worked with Harbro for a number of years now; they understand what we're trying to achieve and design rations that make the best of what we grow on farm, combined with a few key quality products that fit our system.

Together we have come up with some diet parameters —minimum 50% forage on a DM basis, and maximum 20% Starch for bull rations.

The bulls on offer today have a steady life-time growth pattern of around 1.5 kgs per day.

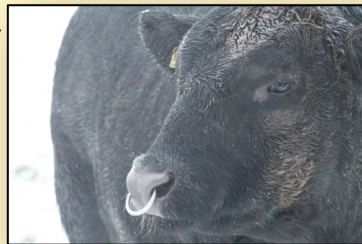
- There is no creep fed, so that maternal ability can be properly gauged.
- Milk, Grass, Grass-silage and Grass again have been the basis of their diet.
- Supplements in first winter were bruised oats, distiller's grains and 1 kg of Buttercup Calf Rearer nuts.
- Supplement over this summer has been 2 to 3 kg per day of Calf Rearer nuts.

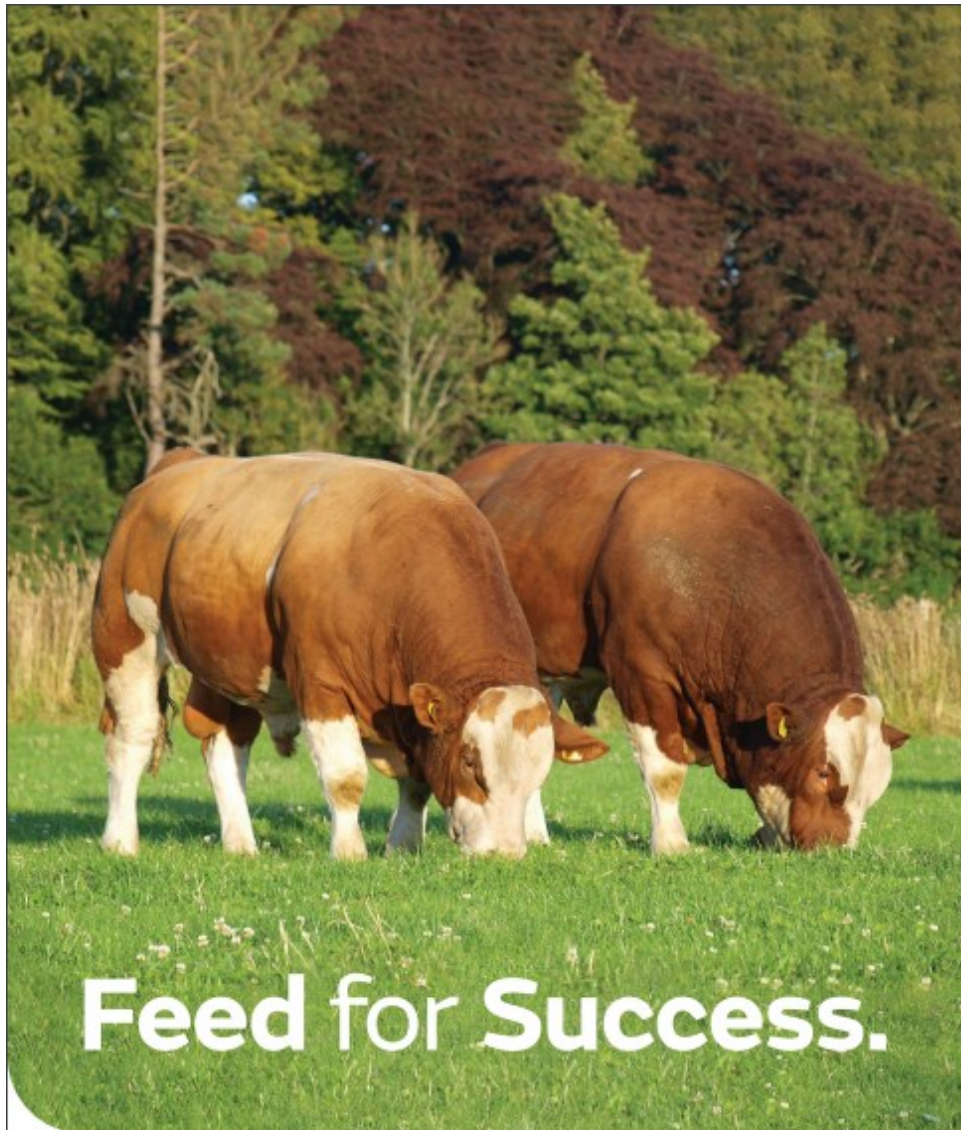


Wintering Option Available

It's fairly easy to winter a young bull to be fit to go to cows—it's another thing having him in sale condition, with a coat of hair and a layer of fat. Help us treat your young herd-sire's rumen and liver with care and buy early.

We can keep your bull at Incheoch until you are ready to take him, free of charge until the end of September, or further through the winter on a feed cost only. Keep price will be payable when the bull is uplifted at £25.00 per head per week. Bulls will be looked after to the best of our ability and will remain at our risk when here. All bulls must be collected by end Feb '23.





Feed for Success.

Working in partnership with Incheoch Farm to create a tailored ration that promotes longevity, health and fertility.



www.harbro.co.uk farming@harbro.co.uk

Harbro
SPECIALISING IN FEEDS FOR RUMINANTS

Messrs Finlay McGowan
Incheoch Farms Alyth Blairgowrie Perthshire PH11 8HS
Email: neil@incheochfarm.co.uk

Finlay, Judy & Clare 01575 560236
Neil & Debbie 01828 633652
N: 07788 100010 D: 07801 783988
Jim Smith 07934 424633
Pentland Auctions 07547 369295



These bulls have been very ably tended to by Jim Smith who has presented them with the help of Bert Taylor - please ask them for any information or help in selecting a bull - or Finlay or Neil.

Thank you for supporting our 5th bull sale.

We want to make selecting and securing your bull as easy and affordable as possible. We will keep reviewing the sale system—so will welcome your feedback.

Please give us a call or stop by for a chat and look around the farm—help us get our sale and breeding programme in line with your goals.

From all the team at Incheoch.

