



FEARN · FARM



**GREAT FROM GRASS SALE  
FRIDAY 26<sup>TH</sup> AUGUST 2022**



# RAM SALE WELCOME

Welcome everyone to our 11th on farm sale, the third online via Yourbid and we are really looking forward to it.

We have a strong selection of sheep for sale with 145 rams, 182 Suffolk x gimmers, 347 white faced gimmers including a consignment from Messers Gill, Achnagarron Farm, which are Fearn bred and managed and 53 ewe lambs.

It would be fair to say the sheep haven't quite had the grass they would normally get in the past few weeks, the dry summer experienced all over the UK has reached us in the north but despite this the sheep are looking well and we have every confidence they will go on and thrive as they usually do.

There's no doubt that our sale of breeding sheep is a calendar highlight for us, it's the culmination of almost two years breeding for most of the sheep we sell on the day which stems from a breeding program which spans almost 30 years since the arrival of our first Texel's. Sale day is also a chance for us to catch up with friends, this is really important and we often don't spend enough time doing this or looking after ourselves for that matter.

With this in mind I came across Farmstrong New Zealand following the Doug Avery tour and along with some awesome individuals, we have been working towards bringing it to Scotland with a view to improving the way we 'live well to farm well'. We are working closely with Movember foundation who kick started the

initiative in New Zealand and we currently have a funding campaign with them which will ensure that for every pound we raise they will match it.

We will donate the average price of a ram and gimmer to Farmstrong Scotland and there will be collection buckets on the day if anyone would like to donate or alternatively follow this link <https://donate.thebiggive.org.uk/campaign/a05690000204FR5AAM>.

Our team, both full time and those who step in for short periods throughout the year have again gone above and beyond to make sure everything is ready for sale day and on behalf of the family we thank them sincerely. Sale day is over so quickly but preparation goes on for weeks both with the shed, sheep and of course in the office setting everything up.

Following the sale we will work with you to ensure transportation of your purchases is arranged with hauliers and in the meantime please get in touch if you have any queries.

Lastly thank you all for taking time to view the catalogue and hopefully view and buy the sheep. Your support over the years means so much to us and drives us on to produce sheep which continue to give a positive contribution to the profitability of farms the length and breadth of the UK.

Best regards

The Scott Family



**Pedigree Shorthorn Breeding Sale**  
**UF Friday 20<sup>th</sup> January 2023 UF**  
**On-Farm and Online with Yourbid**



**John: 07770 863506 | Office: 01862 832522/832205 |**  
**Email: [admin@fearnfarm.com](mailto:admin@fearnfarm.com)**  
**Website: [www.fearnfarm.com](http://www.fearnfarm.com)**



**THE MILL**  
at  
FEARN • FARM

The Mill at Fearn Farm is a flexible, new purpose built holiday house with two properties. The Wee End sleeps 4 and The Mill End sleeps 10, with an internal door you can join the properties up as one big spacious house.

Fully equipped kitchens • Wood burning stoves • Super king zip lock beds • Luxurious linen and towels • WiFi •

BBQ outdoor eating & relaxing areas

10% discount for Luing Society members

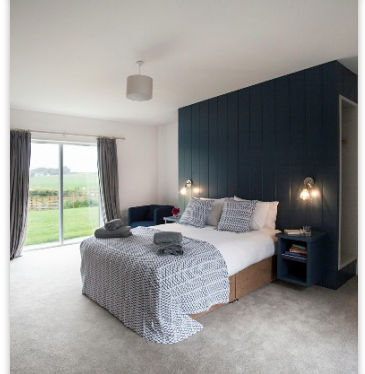
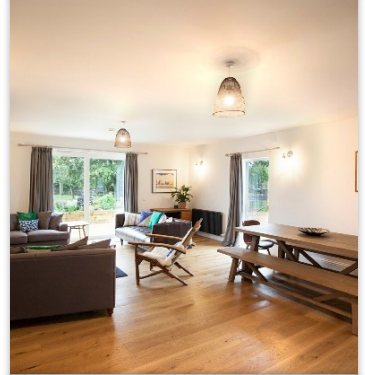
For availability and to book go to [www.fearnfarm.com/holidays](http://www.fearnfarm.com/holidays)

Enquiries: [fiona@fearnfarm.com](mailto:fiona@fearnfarm.com)  
01862 832522 • 07801675970  
Fearn Farm, Tain, Ross-shire  
IV20 1TL



The Mill at Fearn Farm

[themillatfearnfarm](https://www.themillatfearnfarm.com)



# Sale Format

It's the same as last year with Yourbid's Helmsman style auction which means that all lots are for sale simultaneously and the sale can conclude at **3pm Friday 26<sup>th</sup> August 2022**, from this time the sale will be extended until there has been a clear 2-minute period without any bids on any lots. If a bid is placed on any lot during that 2-minute period then bidding on all lots is extended for a further 2-minutes. Final time will be called clearly by a family representative who will use his discretion to ensure all bidders are satisfied.

## Bidding Increments:

- Rams - £25
- Gimmers - £5

All lots will go live for sale at **10am on 18/08/2022**.

This allows the buyers to bid from the comfort of their home/office, tractor seat or on farm with us on the sale day.

## Sale Process

1. When the sale goes live at **10am on 18/08/2022** please register to bid via [www.fearnfarm.com](http://www.fearnfarm.com) You will find videos of all lots here. Please get in touch with us if you have any issues with this or if you need assistance registering.

2. Attend to view the rams on **Sunday 21st August** between **1 and 4pm** on the sale day itself. Family members will be available to discuss rams and what would suit your system. If these times do not suit please get in touch and we will try to arrange an alternative time.

3. On the sale day you can either bid from where ever you are or attend in person. We would be delighted to see you. Wi-Fi will be available and members

of the Fearn team will be on hand to accept bidding slips if preferred which will be typed in to laptops on site.

## Post-Sale

1. Invoices will be emailed direct from Fearn Farm & settled before removal of stock from Fearn Farm if not previously arranged with John or Fiona Scott.
2. All movements will be made via ScotEID by Fearn Farm.
3. Please collect your rams on the day if you can or liaise with John to arrange collection at a later date.
4. We can deliver locally and we'll work with hauliers to arrange delivery further afield.

## Ram Health

All rams produced in our stud flock are MV accredited and are on the Heptivac P system.

They have recently received the following treatments:

- Ovivac P booster
- Agrimin 24-7 Bolus
- Bravoxin 10

And prior to departure they will receive the following to allow them to enter your quarantine area.

- Cydectin 2% LA solution
- Zolvix

## Warranty

All rams have been vet checked prior to the sale, we have done what we can to ensure they are fit for purpose.

If you have any issues with your purchase post sale that means the ram is incapable of doing his job please get in touch, we are here to help.

Finally, refreshments and food will be available and our sponsors are really looking forward to seeing you.



FEARN · FARM

# 30 Pedigree Beef Shorthorn Cows with Calves at Foot Sale

## Friday 23<sup>rd</sup> September 2022

### On-farm & Online with Yourbid



**Performance Recorded, BVD Accredited, Johne's Risk  
Level 1, Neospora Tested & PD information available**

**[www.fearnfarm.com](http://www.fearnfarm.com)**

**M:07770 863506 | T:01862 832522**

**E: [admin@fearnfarm.com](mailto:admin@fearnfarm.com)**





**F**  
FEARN · FARM  
J · SCOTT & PARTNERS

# Current Stock

## Energizers

- Solar: S200, S100, S40, S10 (incl batteries)
- Battery: BA20, B35, B20
- Mains: MB150



## Fencing Equipment

- Geared Reels 500m
- Duopack Vario white posts
- Wire & Rope Tensioners
- Screw in insulators
- Fault Finders
- And Much More!



To order please call: 01862 832522 or  
Email: [admin@fearnfarm.com](mailto:admin@fearnfarm.com)





# We'll take care of business

To find out more contact:

**Brian Richardson**

Head of Agriculture

[brian.richardson@cybg.com](mailto:brian.richardson@cybg.com)

It's really important to us to have a specialist team who understand the challenges within agriculture. We have a long history of supporting our farming customers as they look to adapt their businesses to deal with the challenges ahead.

Our team of Agricultural Managers are based throughout the UK and are always on hand to provide advice and support to help our customers thrive.

**MONEY** 

Virgin Money is a trading name of Clydesdale Bank PLC  
(which also trades as Yorkshire Bank).

# Texel



Lot	Ear No.	Born	Sire	Born As	8 wk wght	Mtrl Ability	Scan Wght	Muscle Depth	Fat Depth	Index	Rank
<b>Average Texel EBV Benchmark</b>											
1	48783	2021	GLENWAY BORIS	2	4.52	-0.18	12.12	2.41	-0.37	387	Top 1%
2	48232	2021	FEARN DUSAUTOIR	2	3.79	-0.31	10.29	3.11	0.27	371	Top 1%
3	48744	2021	GLENWAY BORIS	1	3.93	0.21	10.25	2.15	0.12	362	Top 1%
4	48312	2021	FEARN DUSAUTOIR	1	4.17	0.71	11.31	2.15	0.02	355	Top 1%
5	49034	2021	LLANFERRES DRAGON	1	3.95	0.15	10.11	1.81	-0.16	352	Top 1%
6	48975	2021	INCHEOCH CYCLONE	2	4.43	0.68	11.16	1.19	-0.14	348	Top 1%
7	48634	2021	GLENWAY BORIS	3	3.57	0.4	9.63	1.91	-0.11	345	Top 1%
8	48928	2021	GLENWAY BORIS	2	3.16	0.21	8.24	3.14	0.18	344	Top 1%
9	48237	2021	FEARN DUSAUTOIR	1	4.48	0.6	9.75	1.78	0.03	343	Top 1%
10	48788	2021	GLENWAY BORIS	2	3.69	0.44	11.71	2.26	-0.07	343	Top 1%
11	48787	2021	GLENWAY BORIS	2	3.36	0.44	8.59	2.85	-0.06	338	Top 1%
12	48801	2021	GLENWAY BORIS	1	4.28	0.47	10.53	1.14	-0.3	334	Top 1%
13	49033	2021	LLANFERRES DRAGON	1	3.6	0.76	9.4	1.82	0.14	334	Top 1%

# Texel



Lot	Ear No.	Born	Sire	Born As	8 wk wght	Mtrl Ability	Scan Wght	Muscle Depth	Fat Depth	Index	Rank
14	48570	2021	GLENWAY BORIS	1	3.36	0.14	8.98	2.42	-0.02	333	Top 1%
15	48647	2021	SMITH BUCCANEER	1	3.3	0.7	8.81	2.49	0.17	330	Top 1%
16	48676	2021	FEARN DUSAUTOIR	1	4.12	0.68	10.87	1.95	0.08	323	Top 1%
17	48962	2021	FEARN DUSAUTOIR	2	3.59	0.56	9.48	1.69	-0.1	321	Top 1%
18	48911	2021	LLANFERRES DRAGON	1	3.65	0.72	9.77	1.81	0.33	313	Top 1%
19	48998	2021	FEARN DUSAUTOIR	1	3.92	0.87	10.39	1.05	-0.13	312	Top 1%
20	48110	2021	SMITH BUCCANEER	2	4.13	0.55	8.96	0.53	0.04	310	Top 1%
21	48813	2021	SMITH BUCCANEER	1	3.44	0.82	11.04	1.88	0.22	310	Top 1%
22	48617	2021	GLENWAY BORIS	2	3.81	0.26	9.91	1.95	-0.26	309	Top 1%
23	48884	2021	GLENWAY BORIS	3	3.16	0.42	8.23	2.84	-0.04	308	Top 1%
24	48466	2021	FEARN DUSAUTOIR	1	4.11	0.54	10.72	1.04	0.03	307	Top 1%
25	48829	2021	GLENWAY BORIS	3	2.86	0.29	9.11	1.77	0.11	304	Top 1%
26	48904	2021	INCHECH CYCLONE	1	3.47	0.34	7.3	1.75	-0.05	304	Top 1%

# Texel



Lot	Ear No.	Born	Sire	Born As	8 wk wght	Mtrl Ability	Scan Wght	Muscle Depth	Fat Depth	Index	Rank
27	48657	2021	FEARN DUSAUTOIR	2	4.12	0.45	11.38	0.4	0.19	292	Top 1%
28	48664	2021	LLANFERRES DRAGON	2	3.47	0.58	8.86	1.41	0.13	292	Top 1%
29	48310	2021	NAB POINT CHIEF	1	3.28	0.09	7.66	2.3	-0.14	291	Top 1%
30	48841	2021	LLANFERRES DRAGON	2	2.98	0.61	7.8	1.86	0.05	291	Top 1%
31	48883	2021	GLENWAY BORIS	3	3.23	0.42	8.2	2.19	-0.1	289	Top 1%
32	48724	2021	GLENWAY BORIS	2	2.33	0.25	6.08	1.95	-0.06	285	Top 1%
33	48103	2021	INCHEOCH CYCLONE	2	3.13	0.34	8.36	0.84	-0.24	281	Top 1%
34	48108	2021	GLENWAY BORIS	2	3.2	0.13	8.28	1.35	-0.29	281	Top 1%
35	48686	2021	INCHEOCH CYCLONE	1	3.45	0.68	9.14	0.16	-0.14	276	Top 5%
36	49060	2021	FEARN DUSAUTOIR	2	2.57	0.45	7.15	1.75	0.22	275	Top 5%
37	48702	2021	LLANFERRES DRAGON	2	2.84	0.63	7.73	1.67	0.06	273	Top 5%
38	48461	2021	FEARN DUSAUTOIR	2	3.29	0.78	8.65	0.83	-0.1	272	Top 5%
39	48730	2021	LLANFERRES DRAGON	2	2.33	0.55	6.06	2.42	0.24	270	Top 5%

# Texel



Lot	Ear No.	Born	Sire	Born As	8 wk wght	Mtrl Ability	Scan Wght	Muscle Depth	Fat Depth	Index	Rank
40	48710	2021	INCHEOCH CYCLONE	2	2.45	0.76	6.39	1.77	-0.1	268	Top 5%
41	48433	2021	SMITH BUCCANEER	1	3.07	0.67	8.45	1.61	-0.03	267	Top 5%
42	48401	2021	INCHEOCH CYCLONE	3	2.51	0.53	6.7	1.22	-0.02	262	Top 5%
43	48144	2021	NAB POINT CHIEF	1	3.85	0.31	9.94	0.54	-0.2	258	Top 5%
44	47967	2021	INCHEOCH CYCLONE	2	3.42	0.58	9.05	0.19	-0.07	252	Top 5%
45	48345	2021	FEARN DUSAUTOIR	2	3.35	0.6	8.58	0.36	-0.12	241	Top 10%
46	48128	2021	SMITH BUCCANEER	3	2.94	0.7	7.47	1.2	-0.21	232	Top 10%
47	48993	2021	INCHEOCH CYCLONE	2	2.8	0.89	7.45	0.5	-0.21	230	Top 10%
48	48157	2021	NAB POINT CHIEF	3	4.13	0.53	10.3	-1.05	-0.29	229	Top 10%
49	48718	2021	TEXEL	0	0	0	0	0	0	0	0

# Texel X Beltex

50	48504	2021	BELTEX	2	1.84	-0.38	4.98	0.27	-0.07	192	-
----	-------	------	--------	---	------	-------	------	------	-------	-----	---

**Shearwell  
Data**

**Livestock Systems**

EXPLORE  
OUR **NEW**  
EXTENDED  
RANGE



**Proud to Sponsor  
Great From Grass  
Ram Sale**



**Ear Tags • EID Readers • Software • Handling**

**FREE REPLACEMENT  
CATTLE & SHEEP TAGS  
FOR LIFE - EVEN WHEN SOLD**

T&Cs apply - Full details online

**Meet your local rep at the sale | Call Jane 07788 209438**

**CONTACT THE TEAM** [www.shearwell.co.uk](http://www.shearwell.co.uk) 01643 841611

# Allan W J Wilson Ltd

**Agricultural and Drainage Contractors**

**Tel Stuart: 07810711425**



**[www.wilsoncontracting.co.uk](http://www.wilsoncontracting.co.uk)**

# Helping landowners and rural businesses

Saffery Champness specialise in accountancy, tax and business advisory services to farms and estates across Scotland. We are here to help you and your business.

Contact us or visit [www.saffery.com](http://www.saffery.com) to find out how we can support you.

Coll Murchison-MacDonald, Inverness  
T: +44 (0)1463 246313  
E: [coll.murchison-macdonald@saffery.com](mailto:coll.murchison-macdonald@saffery.com)

Margi Campbell, Inverness  
T: +44 (0)1463 246336  
E: [margi.campbell@saffery.com](mailto:margi.campbell@saffery.com)

[www.saffery.com](http://www.saffery.com)

**Saffery Champness**  
CHARTERED ACCOUNTANTS



# Suftex



Lot	Ear No.	Born	Sire	Born As	8 wk wght	Mtrl Ability	Scan Wght	Muscle Depth	Fat Depth	Index	Rank
51	48785	2021	FEARN	1	-0.32	-1.56	-0.17	0.65	0.11	192	-
52	48482	2021	FEARN	2	-0.7	0.35	-2.01	1.31	0.55	111	-
53	48858	2021	FEARN	2	1.82	0.22	3.91	-1.24	0.33	77	-

# Beltex

Average Beltex EBV Benchmark											
					0.87	-0.03	2.17	0.27	0	155	Average
54	47848	2021	MID SHAWTONHILL	2	0.92	0.28	2.38	2.91	-0.55	223	Top 1%
55	47869	2021	MID SHAWTONHILL	2	1.31	0.15	3.4	1.96	-0.36	218	Top 5%
56	47858	2021	MID SHAWTONHILL	2	2.17	-0.15	5.57	-0.04	-0.58	185	Top 10%
57	47866	2021	MID SHAWTONHILL	2	0.33	0	0.9	0.87	-0.3	131	Bottom 25%
58	47867	2021	MID SHAWTONHILL	2	0.7	0	1.69	0.27	-0.52	125	Bottom 25%
59	47853	2021	DOOLEY	1	0.42	-0.19	1.04	-0.2	-0.26	120	Bottom 25%

The new JCB Fastrac iCON. Discover the most productive Fastrac yet.

PUTTING YOU IN TOTAL

# CONTROL



# FASTRAC iCON



Fraser Hughes | 07817 017860  
fraser.hughes@scotagri.co.uk

Industrial Estate Muir of Ord. IV6 7UA  
Tel: 01463 870591



[scotagri.com](http://scotagri.com)



A Scot JCB Group Company

# Sufbel



Lot	Ear No.	Born	Sire	Born As	8 wk wght	Mtrl Ability	Scan Wght	Muscle Depth	Fat Depth	Index
60	49067	2021	BELTEX	1	0.87	-0.9	1.7	1.38	0.77	201
61	48548	2021	BELTEX	2	-0.51	-0.95	-2.21	0.6	1.12	111
62	48005	2021	BELTEX	3	-0.65	-0.86	-2.5	0.76	0.81	103
63	48322	2021	BELTEX	1	0.26	-1.04	0.13	-1.36	0.53	97
64	47970	2021	BELTEX	1	-1.11	-1.31	-3.74	0.69	0.8	83
65	47975	2021	BELTEX	2	-0.03	-1.14	-1.09	-0.25	-0.25	81
66	49032	2021	BELTEX	2	-1.11	-0.62	-4.18	0.27	0.12	61
67	47987	2021	BELTEX	1	-1.41	-1.04	-3.44	1.03	0.02	61
68	48220	2021	BELTEX	2	-1.81	-1.14	-5.57	1.01	0.5	52
69	48449	2021	BELTEX	1	-1.38	-1.47	-4.21	0.25	0.06	35
70	48221	2021	BELTEX	2	-1.79	-1.14	-5.71	0.8	-0.01	33
71	47963	2021	BELTEX	2	-2.25	-0.92	-6.9	0.99	0.27	18
72	47969	2021	BELTEX	-	-	-	-	-	-	-
73	48681	2021	BELTEX	-	-	-	-	-	-	-
74	48906	2021	BELTEX	-	-	-	-	-	-	-



## LEADING THE FIELD WITH GREAT GRASS!

DLF Seeds are delighted to supply the Scott family at Fearn Farm with many of their forage requirements.

Rape, Kale, Stubble turnips, Swedes, brassica mixes as well as grass and clover mixtures.

If you are interested in hearing more about DLF Seeds speak to your local merchant or contact Paddy Jack and Michael Mulgrew at DLF Edinburgh

01506 674815  
pjack@dlf.co.uk  
07764 568464



01506 674806  
mmulgrew@dlf.co.uk  
07890 313137



# Suffolk



Lot	Ear No.	Born	Sire	Born As	8 wk wght	Mtrl Ability	Scan Wght	Muscle Depth	Fat Depth	Index
<b>Average Suffolk EBV Benchmark</b>										
75	48198	2021	BENTLEY 03861	2	0.15	0.04	-0.6	1.65	-0.04	135
76	48143	2021	BENTLEY 03861	2	-0.41	0.24	-2.47	1.15	0.15	124
77	48886	2021	BENTLEY 03861	2	0.31	0.27	-0.23	0	0.05	124
78	47974	2021	FEARN 31220	3	0.58	-0.84	0.42	-0.7	0.73	122
79	48365	2021	BENTLEY 03861	2	-0.88	0.32	-3.38	1.32	0.12	109
80	47999	2021	BENTLEY 03861	2	-0.95	-0.02	-3.82	0.89	0.79	99
81	48033	2021	BENTLEY 03861	2	-0.66	0.02	-3.22	0.6	0.3	99
82	48366	2021	BENTLEY 03861	2	-1.06	0.32	-4.04	1.13	0.33	97
83	48324	2021	BENTLEY 03861	2	-1.02	0.26	-3.98	0.87	0.36	91
84	49069	2021	BENTLEY 03861	2	-0.37	0.03	-1.77	-0.25	0.03	88
85	48545	2021	BENTLEY 03861	2	-0.63	0.37	-2.73	0.1	-0.08	87
86	48616	2021	BENTLEY 03861	1	-0.62	0.1	-2.15	-0.5	-0.07	71
87	48609	2021	BENTLEY 03868	2	0.11	0.39	-0.22	-0.96	-0.76	69
88	48935	2021	BENTLEY 03868	2	-0.81	-0.15	-2.35	-0.15	0.27	65

# Suffolk



Lot	Ear No.	Born	Sire	Born As	8 wk wght	Mtrl Ability	Scan Wght	Muscle Depth	Fat Depth	Index
89	48508	2021	FEARN 31220	2	0	-0.6	-1.09	-1.19	-0.07	52
90	48413	2021	FEARN 31189	1	-0.35	0.05	-1.25	-1.73	0.52	50
91	48294	2021	BENTLEY 03868	2	-1.03	-0.03	-3.26	-0.06	0.08	48
92	48750	2021	BENTLEY 03861	2	-1.36	-0.01	-4.28	-0.13	0.08	48
93	48019	2021	BENTLEY 03868	3	-0.85	-0.26	-3.13	-0.89	0.59	46
94	48925	2021	FEARN 31189	2	-1.43	-0.56	-4.06	0	0.64	45
95	48398	2021	FEARN 31189	1	-0.49	-0.47	-1.95	-1.71	0.79	42
96	48037	2021	BENTLEY 03868	2	-0.74	0.2	-2.45	-0.64	-0.58	37
97	48295	2021	BENTLEY 03868	2	-0.84	-0.03	-2.74	-0.91	0.13	36
98	48601	2021	BENTLEY 03868	3	-1.05	-0.03	-3.89	-0.47	-0.01	36
99	48734	2021	FEARN 31220	2	-1.22	-1.07	-3.98	-0.4	0.36	36
100	48735	2021	FEARN 31220	2	-0.63	-1.07	-2.9	-1.31	0.18	27
101	48556	2021	FEARN 31220	2	-0.49	-0.74	-1.9	-1.89	0.01	21
102	48728	2021	FEARN 31189	2	-1.49	-0.15	-4.26	-0.57	0.28	17
103	49006	2021	FEARN 31189	1	-1.73	-0.44	-4.9	-0.67	0.43	2
104	48447	2021	FEARN 31189	2	-2.69	-0.38	-8.04	-1.28	0.14	-71

[www.hbsring.co.uk](http://www.hbsring.co.uk)



## PROUD SPONSOR OF FEARN FARM RAM SALE

**HBS Ring Ltd is a co-operative made up of 1200 farmers, crofters, estates, rural businesses, contractors and individual members. Our purpose is to improve the long-term sustainability and resilience of members, living and working in local rural communities.**

**Our focus is on encouraging members to work together by sharing rural assets, and collectively purchasing inputs, training, and energy through a cost-effective quality service.**

# Ring the Ring 01463 811603



# SEEING RURAL BUSINESS THROUGH MANY LENSES.

Serving  
clients across  
the Highlands  
and Islands  
from our office  
in Inverness

We pride ourselves on offering an outstanding service to our rural estates, farming and rural business clients.

We're the largest full service law firm in Scotland, providing advice across the full spectrum of rural matters, including:

- Agricultural Law
- Crofting
- Renewables
- Sporting and Game Law
- Succession Planning
- Health & Safety
- Employment
- Family Law
- Forestry

## Visit:

[brodies.com](http://brodies.com)



# Aberfield



Lot	Ear No.	Born	Carcase Traits			Ewe Traits			Index	Grade
			Growth	Muscle Depth	Fat Depth	Lambing %	Matern. Ability	Ewe weight		
<b>Aberfield Breed Average</b>			<b>0</b>	<b>0</b>	<b>0</b>	<b>0</b>	<b>0</b>	<b>0</b>	<b>58</b>	
105	48484	2021	2.87	0.45	0.02	6	0.87	1.12	97	ELITE
106	48483	2021	2.56	0.42	0.02	6	0.87	1.12	96	ELITE
107	48942	2021	1.86	2.84	0.51	3	0.34	-0.09	91	ELITE
108	48490	2021	4.1	0.68	0.3	4	0.73	1.62	90	ELITE
109	48283	2021	1.96	0.84	-0.19	3	0.83	1	89	ELITE
110	48880	2021	2.12	1.01	0.01	7	-0.11	1.36	88	ELITE
111	48172	2021	1.55	0.18	0.04	5	0.68	0.43	85	ELITE
112	48297	2021	1.08	1.87	0.36	0	0.8	-0.53	84	ELITE
113	48361	2021	1.67	0.01	0.25	4	0.86	-0.88	84	ELITE
114	48685	2021	1.33	1.37	0.1	4	0.25	-0.39	84	ELITE
115	49007	2021	-0.79	0.52	-0.02	8	0.56	-0.44	84	ELITE
116	47994	2021	1	1.26	0.14	4	0.22	-1.98	83	ELITE
117	48468	2021	0.98	1.03	0.17	3	0.82	0.01	83	ELITE
118	48246	2021	1.96	1.27	-0.07	2	0.34	-0.24	82	ELITE

# Aberfield



Lot	Ear No.	Born	Carcase Traits			Ewe Traits			Index	Grade
			Growth	Muscle Depth	Fat Depth	Lambing %	Matern. Ability	Ewe weight		
119	48149	2021	0.63	0.81	0.06	4	0.5	0.11	81	ELITE
120	48649	2021	1.21	1.81	0.02	2	0.51	2.27	81	ELITE
121	48739	2021	3.03	0.99	-0.01	1	0.55	0.97	81	ELITE
122	48133	2021	2.53	0.86	0.27	7	0.01	3.35	80	ELITE
123	48539	2021	1.5	1.58	-0.03	3	0.04	0.43	80	ELITE
124	48281	2021	1.62	0.08	0.2	4	0.67	0.53	79	ELITE
125	48018	2021	3.53	-0.06	0.56	5	0.36	3.09	77	ELITE
126	48452	2021	1.83	1.15	0.19	-3	0.94	1.14	77	ELITE
127	48611	2021	2.82	1.08	0.04	0	0.22	1.28	77	ELITE
128	48915	2021	-0.32	-0.02	-0.15	9	0.21	0.56	77	ELITE
129	48185	2021	2.06	1.83	0.43	-1	0.43	0.39	76	ELITE
130	48241	2021	2.51	-0.3	0	3	0.36	1.91	76	ELITE
131	48352	2021	1.54	1.19	0.12	-1	0.64	0.76	76	ELITE
132	48795	2021	1.77	0.63	0.08	1	0.36	-1.38	76	ELITE
133	48267	2021	1.57	1.3	0.11	1	0.12	0.11	75	ELITE

# Aberfield



Lot	Ear No.	Born	Carcass Traits			Ewe Traits			Index	Grade
			Growth	Muscle Depth	Fat Depth	Lambing %	Matern. Ability	Ewe weight		
134	48596	2021	1.28	0.57	0.31	1	0.81	0.21	74	ELITE
135	48753	2021	1.28	0.54	-0.04	6	-0.09	2.77	74	ELITE
136	48985	2021	1.51	0.06	0.09	1	0.69	1.29	74	ELITE
137	48257	2021	0.58	-0.08	-0.01	6	0.05	1.78	73	ELITE
138	48287	2021	2.43	-0.11	0.2	3	0.27	-0.81	73	ELITE
139	48571	2021	3.96	0.46	0.48	2	0.21	-1.72	73	ELITE
140	48586	2021	1.38	-0.01	0.08	3	0.41	-0.92	73	ELITE
141	48622	2021	1.39	1.99	0.41	-3	0.19	-1.17	73	ELITE
142	48861	2021	0.62	0.63	0.2	4	0.04	-0.95	73	ELITE
143	48329	2021	1.3	0.87	0.33	-2	0.81	1.17	72	ELITE
144	48353	2021	2.25	0.49	0.18	-1	0.64	0.76	72	ELITE
145	49062	2021	2.18	0.83	0.18	1	-0.01	4.29	67	SELECT



Knowledge grows

# Great from Grass grown with Yara fertilizer

Proud to be part of this event showcasing locally produced top quality livestock.

Quality stock deserve quality grass, which is why Fearn Farm use Yara fertilizer.

Come and chat to **Jock McKenzie**, Yara Area Manager for the North of Scotland, about the best fertilizer plan to get you the max from your grass.

[david.mckenzie@yara.com](mailto:david.mckenzie@yara.com)  
**07919 481553**  
[www.yara.co.uk](http://www.yara.co.uk)



# Breeding Females



Our Gimmers & Ewe Lambs have been bred on the same principle as our rams. They are on the Heptivac P plus system and have been vaccinated with Enzovax. If you have any questions about them please do not hesitate to contact us.

## MV Accredited Suffolk X Females

One of the great things about the NZ Suffolk is that it produces excellent females. When used over Aberfield cross ewes it gives a long feminine ewe which when crossed back with a Beltex or Suffolk will give a cracking prime lamb.

## White Faced Females

Most of our crossbred ewes at Fearn now have a degree of Aberfield in them; we find they suit the farm, have a nice number of lambs and are extremely maternal. This year we have on offer a mixture of Aberfield x and Texel x gimmers and ewe lambs which are suitable for crossing with a New Zealand Suffolk or SufTex to produce high quality prime lambs.

## Gimmers

Lot	Quantity	Breed	Colour Mark	Notes
146	7	Suffolk X	Orange Shoulder	
147	7	Suffolk X	Yellow Rump	
148	8	Suffolk X	Red Rump	
149	10	Suffolk X	Yellow Shoulder	
150	18	Suffolk X	Blue Shoulder	
151	18	Suffolk X	Orange Rump	

# Gimmers



Lot	Quantity	Breed	Colour Mark	Notes
152	20	Suffolk X	Purple Rump	
153	21	Suffolk X	Blue Rump	
154	31	Suffolk X	Green Rump	52015 - 1 eye to declare
155	41	Suffolk X	No Mark	
156	9	White Faced	Blue Rump	
157	10	White Faced	Red Shoulder	
158	12	White Faced	Purple Rump	
159	15	White Faced	Blue Shoulder	
160	15	White Faced	Red Rump	
161	15	White Faced	Yellow Shoulder	
162	16	White Faced	Yellow Rump	
163	18	White Faced	Blue Back	
164	20	White Faced	Orange Rump	
165	21	White Faced	Purple Shoulder	
166	22	White Faced	Purple Back	

# Gimmers



Lot	Quantity	Breed	Colour Mark	Notes
167	29	White Faced	Orange Shoulder	
168	35	White Faced	No Mark	
169	10	White Faced	Green Back	Owner - Achnagarron Farm
170	10	White Faced	Yellow Back	Owner - Achnagarron Farm
171	12	White Faced	Blue Side Shoulder	Owner - Achnagarron Farm
172	12	White Faced	Green Rump	Owner - Achnagarron Farm
173	12	White Faced	Green Shoulder	Owner - Achnagarron Farm
174	16	White Faced	Purple Side Shoulder	Owner - Achnagarron Farm
175	26	White Faced	Orange Side Shoulder	Owner - Achnagarron Farm

# Ewe Lambs

Lot	Quantity	Breed	Colour Mark	Notes
176	10	White Faced	Blue Rump	
177	21	White Faced	No Mark	
178	22	White Faced	Orange Rump	



**PROCAM**

**robertson crop services**

General Agricultural Products Division

**Fertiliser & Lime**

**Grass & Cereal Seed**

**Feed Blocks, Buckets & Minerals**

**Animal Health Products**

**Animal Feed Stuff**

**Draff**

Scotsburn Road, Kildary, Ross-Shire, IV18 0NJ

Telephone: 01862 842552





WATSON SEEDS



Your local Watson Seeds contact:

Euan Campbell

07393 699522 / [ecampbell@watsonseeds.com](mailto:ecampbell@watsonseeds.com)

---

[www.watsonseeds.com](http://www.watsonseeds.com)



**Netherton**  
**Tractors Ltd**



OFFICIAL LOCAL DEALERSHIP IN THE  
NORTH OF SCOTLAND TO SUPPLY



**KRAMER**



YOUR SALES CONTACTS IN THE NORTH

TURRIFF

RICHARD MOIR - 07584 668379  
ALLAN GRANT - 07917 376742  
OWEN YOUNG - 07917 376750

NAIRN

SCOTT FRASER 07584355057



## Farm Minerals

Designed & manufactured  
in Scotland



To suit the feeds and forages  
produced in Scotland

Norvite, Warehouse, Inch, Aberdeenshire. AB52 6YD

Telephone: 01464 831261

Fax: 01464 831400

[www.norvite.com](http://www.norvite.com)





# THANK YOU FOR YOUR SUPPORT

*John, Fiona & the rest of the Fearn Team*

**Fearn Farm, Fearn  
Ross-shire, IV20 1TL**

Find us on:   

**John: 07770 863506 | Office: 01862 832522**

**Email: [admin@fearnfarm.com](mailto:admin@fearnfarm.com)**

**[www.fearnfarm.com](http://www.fearnfarm.com)**