



FEARN · FARM

‘Northern Lights’ Production Sale

Friday 20th January 2023



Beef Shorthorn Bulls, Heifers & Semen

BVD Accredited, Johne’s Level 1 & Neospora Level 2

07770 863506 | 01862 832522 /832205
www.fearnfarm.com | admin@fearnfarm.com



Fearn Farm



@FearnFarm



fearn_farm

October 2022 Beef Shorthorn - Percentile Bands for all 2020 born animals

Use this table as a guide to compare individual animals with the current genetic level of the breed

	Calv-Ease			Birth			Growth			Fert			Carcase			Indexes			
	Dir	Dtrs	%	GL	Bwt	200	400	600	Mwt	Milk	SS	Cwt	EMA	Rib	RBY	IMF	ST	SR	MA
High 1%	+8.8	+5.9	-3.0	-1.3	+37	+56	+71	+80	+13	+1.3	+51	+4.8	+1.3	+2.4	+0.6	+50	+55	+31	
High 5%	+5.6	+4.0	-1.5	-0.1	+31	+48	+61	+68	+11	+0.9	+44	+3.8	+0.8	+1.8	+0.3	+43	+47	+28	
High 10%	+4.0	+3.0	-1.1	+0.3	+28	+44	+56	+61	+10	+0.7	+40	+3.3	+0.5	+1.5	+0.2	+39	+42	+27	
High 15%	+3.1	+2.3	-0.9	+0.6	+26	+41	+52	+57	+9	+0.6	+38	+2.9	+0.4	+1.3	+0.1	+37	+39	+26	
High 20%	+2.3	+1.8	-0.7	+0.8	+25	+39	+50	+54	+8	+0.5	+36	+2.7	+0.3	+1.1	+0.1	+35	+37	+26	
High 25%	+1.7	+1.4	-0.6	+1.0	+24	+38	+48	+51	+8	+0.5	+34	+2.5	+0.2	+1.0	+0.0	+33	+35	+25	
High 30%	+1.1	+1.0	-0.5	+1.1	+23	+36	+46	+49	+7	+0.4	+33	+2.3	+0.2	+0.9	+0.0	+32	+33	+24	
High 35%	+0.7	+0.7	-0.4	+1.3	+22	+35	+44	+47	+7	+0.3	+32	+2.2	+0.1	+0.8	+0.0	+31	+32	+24	
High 40%	+0.2	+0.3	-0.3	+1.4	+21	+33	+42	+45	+7	+0.3	+30	+2.0	+0.0	+0.8	-0.1	+30	+30	+24	
High 45%	-0.2	+0.0	-0.2	+1.5	+20	+32	+41	+43	+6	+0.2	+29	+1.9	+0.0	+0.7	-0.1	+28	+29	+23	
50%	-0.7	-0.3	-0.1	+1.7	+19	+31	+39	+41	+6	+0.2	+28	+1.8	-0.1	+0.6	-0.1	+27	+27	+23	
Low 45%	-1.2	-0.7	+0.0	+1.8	+18	+29	+38	+40	+6	+0.1	+27	+1.6	-0.1	+0.5	-0.1	+26	+26	+22	
Low 40%	-1.6	-1.0	+0.1	+1.9	+17	+28	+36	+38	+5	+0.1	+26	+1.5	-0.2	+0.5	-0.2	+25	+25	+22	
Low 35%	-2.1	-1.4	+0.2	+2.1	+16	+27	+35	+36	+5	+0.0	+25	+1.4	-0.3	+0.4	-0.2	+24	+23	+22	
Low 30%	-2.6	-1.8	+0.2	+2.2	+15	+26	+34	+34	+5	+0.0	+24	+1.2	-0.3	+0.3	-0.2	+23	+22	+21	
Low 25%	-3.2	-2.2	+0.3	+2.4	+14	+24	+32	+33	+4	-0.1	+22	+1.1	-0.4	+0.2	-0.3	+22	+20	+21	
Low 20%	-3.8	-2.7	+0.4	+2.6	+13	+23	+30	+31	+4	-0.1	+21	+0.9	-0.5	+0.1	-0.3	+20	+19	+20	
Low 15%	-4.6	-3.3	+0.6	+2.8	+12	+21	+28	+28	+3	-0.2	+20	+0.8	-0.6	+0.0	-0.4	+19	+17	+20	
Low 10%	-5.7	-4.0	+0.7	+3.1	+11	+19	+25	+24	+3	-0.3	+18	+0.5	-0.7	-0.1	-0.5	+17	+15	+19	
Low 5%	-7.5	-5.2	+0.9	+3.5	+8	+16	+21	+20	+2	-0.4	+15	+0.3	-0.9	-0.3	-0.6	+14	+12	+18	
Low 1%	-10.6	-7.5	+1.4	+4.4	+4	+9	+13	+9	+0	-0.7	+10	-0.4	-1.4	-0.8	-0.9	+9	+6	+16	

Welcome

Welcome everyone to our 2023 'Northern Lights' sale of Beef Shorthorn breeding cattle. This will be our third online cattle sale and following an extensive AI program in 2020 we have a cracking crop of bulls available for sale from some of the best herd sires in the breed.

Fearn Rhuaridh, was placed 1st in the Scottish Club competition and whilst he does stand out there are several others who would complement both stud and commercial herds.

This is the most complete offering of bulls that we have ever produced, they were out wintered as calves and will only be brought into the shed for viewing purposes.

Over the years we have fine-tuned the way we produce bulls with the customer in mind. We feel we now offer a product that won't fade or break down, it hasn't been fed to excess and will be fit and ready to work.

We are a little light on heifers this year due to a bull letting us down in the summer but what we have is good and gives breeders the chance to add something different to their herds in terms of breeding and type.

There are many reasons for having our own sale, economically it makes sense, we don't carry the costs associated with selling through the ring and although we may not get that headline grabbing price, that's OK, our average is what drives us

along with the opportunity to ensure our customers buy the right animal. By hosting our sale the way we do it gives us a chance to interact more with our customers, we really want to make sure you get something that suits your herd so please get in touch, talk us through what you need and we will help where we can.

Health status is also very important to us. We work closely with our vet to ensure we keep up to date and with that in mind we have tested the whole herd for Neospora and have now have level 2 status. We are also Johnes level 1 and BVD Accredited with all cattle vaccinated for BVD with breeding females vaccinated for Lepto.

We look forward to seeing you at the farm on sale day and of course if you would like to view the cattle prior to that we will be more than happy to show you round by appointment, please get in touch with the office, john@fearnfarm.com or 01862832522.

If you can't make it to view the cattle we will have videos on our farm YouTube channel and we would be more than happy to chat through options on the phone, we have had several buyers do this over the past couple of years who have been delighted with their purchases.

Best regards

The Scott Family



Sale Format

The sale will be conducted as a Helmsman-style auction, meaning that all lots are for sale simultaneously. The sale will be hosted via our Yourbid platform, accessed via our website www.fearnfarm.com. Once registered, online buyers will receive a buyer number via email which will automatically accompany each bid placed. All live bids will be visible at all times online.

Online bidding will commence on the **12th January 2023 at 10am** and run until the conclusion of the sale on the **20th January 2023 at 3pm once there has been a period of at least two minutes without a bid being received on any lot.**

If another bid is placed on any lot during the two-minute period, then time is extended, where bidding is open on all lots. Final time will be called clearly and discretion will be used to ensure all buyers are satisfied.

We would encourage all buyers to register 24 hours in advance of the conclusion of the sale and place practice bids on our demonstration auction ahead of the sale day.

Please join us on Friday 20th January on farm from 12pm for the conclusion of the sale. Hot food and drink will be provided!

To get help with registering or any of the above, or if you do not have online access, please get in touch with any of the team here at Fearn Farm.



Viewing

Prior to the sale, all lots will be filmed and photographed for you to view online. If you would like to physically view the stock prior to the sale, we are hosting on-farm viewing days between 10am and 3pm by appointment on the following dates:

- **Wednesday 28th December 2022**
- **Friday 6th January 2023**
- **Friday 13th January 2023**
- **Friday 20th January 2023**

Please email john@fearnfarm.com or call 01862 832522 to book. Viewing's out with these times are possible, please call John on 07770 863506 to discuss.

Terms & Conditions

The sale will be conducted in pounds. Bidding increments will automatically set to the following unless overwritten by the purchasers via Yourbid:

- **Breeding Males - £200**
- **Breeding Females - £100**
- **Semen - £5**

Notice to buyers – all purchases to be settled before removal of stock from Fearn Farm if not previously arranged with John Scott. Any party successfully bidding on a lot will be deemed to be liable for that account. Bulls will be sold under NBA rules, with a 6 month breeding warranty given from the date on which animals leave Fearn.

Collection & Delivery

Throughout this process we have been mindful of distribution of the cattle throughout and out with the UK if required. We have made contact with Armstrong Haulage and the team at A J Ewing, Annan, who have agreed to assist us with UK and export distribution.

If you are local to the Highland area we can deliver within reason. All stock can be left at Fearn, at the sellers risk, until 4th February. After which date animals can be kept for longer by separate agreement at which there will be a cost involved. Please discuss your requirements with John Scott.

Health Status

All of our herds are Johnes Disease Level 1 and BVD Accredited and Neospora Risk Level 2. We vaccinate all animals for BVD and females for Lepto. Females have also received an all trace bolus.



Grade Up

Our Fearn Abbey cattle within this catalogue are Grade Up's. This is the process by which a herd comprising commercial, non-pedigree animals can progress to being fully accepted into the Pedigree Herd Book.

EBV's

EBV's for all cattle have been provided. For convenience, a colour code system highlights where the EBV falls within the percentile bands.

Top 10%

Top 25%

Average +

Contact Us

If you need to get in contact with us prior to the sale or on the day of the sale please get in touch with us via the following methods:

- **Email - john@fearnfarm.com**
- **Office Phone - 01862 832522 / 832205**
- **John Scott Mobile - 07770 863506**

Thank you

The Scott Family would like to take this opportunity to say thank our team for pulling the sale together, Ian and Jimmy for clipping the cattle, Anne MacPherson for the photography and videos and our vets for their continued guidance and support.

We would also like to thank our sponsors their continued support, we enjoy working with you and to the Giddings family in New Zealand who created Yourbid, a platform that has been a game changer in the way we sell our livestock.



UNDERSTANDING THE BREEDPLAN PERFORMANCE RECORDING INFORMATION IN THIS CATALOGUE

Only Beef Shorthorn GROUP BREEDPLAN EBVs or INTERIM EBVs with Accuracy (Acc) can be validly compared between herds.

ESTIMATED BREEDING VALUES (EBVs)

The EBV is the best estimate of an animal's genetic merit for that trait.

ACCURACY

An accuracy value is presented with every EBV and gives an indication of the amount of information that has been used in the calculation of that EBV. The higher the accuracy the lower the likelihood of change in the animal's EBV as more information is analysed for that animal or its relatives. Accuracy below 75% should be considered low.

CALVING EASE

Calving Ease EBVs are based on calving difficulty scores, birth weights and gestation length information. More positive EBVs are favourable and indicate easier calving.

DIR: Direct calving ease indicates how this animal influences the birth of its progeny.

DTRS: Daughter's calving ease indicates how well the animal produces daughters that have easier calving.

BIRTH AND FERTILITY

GL: Gestation Length EBV (days) is based on AI records. Lower (negative) GL EBVs indicate shorter gestation lengths which generally relate to easier calving and increased growth after birth.

BWT: Birth Weight EBV (kg) is based on the measured birth weight of animals, adjusted for dam age. The lower the value the lighter the calf at birth and the lower the likelihood of a difficult birth. This is particularly important when selecting sires for use over heifers.

SS: Scrotal Size EBV (cm) is an indicator of male fertility in regards to semen quality and quantity. Higher (positive) EBVs indicate higher fertility. There is also a small negative correlation with age of puberty in female progeny.

GROWTH

MILK: 200-Day Milk EBV (kg) is an estimate of an animal's milking ability. For sires, this EBV is indicative of their daughter's milking ability as it affects the 200-day weight of their calves.

200: 200-Day Growth EBV (kg) is calculated from the weight of animals taken between 80 and 300 days of age. Values are adjusted to 200 days and for dam age. This EBV is the best single estimate of an animal's genetic merit for growth to early ages.

400: 400-Day Weight EBV (kg) is calculated from the weight of progeny taken between 301 and 500 days of age, adjusted to 400 days and for dam age. This EBV is the best single estimate of an animal's genetic merit for yearling weight.

600: 600-Day Weight EBV (kg) is calculated from the weight of progeny taken between 501 and 900 days of age, adjusted to 600 days and for dam age. This EBV is the best single estimate of an animal's genetic merit for growth beyond yearling age.

MWT: Mature Cow Weight EBV (kg) is an estimate of the genetic difference in cow weight at 5 years of age. Smaller, or more moderate EBVs are generally more favourable.

CARCASE

CWT: Carcase Weight EBV (kg) estimates the genetic difference in carcase weight at a standard age of 650 days.

EMA: Eye Muscle Area EBV (cm²) estimates genetic differences in eye muscle area of a 300kg dressed carcase. More positive EBVs indicate better muscling on animals.

FAT: Rib Fat EBV (mm) estimates the genetic differences in fat depth at the rib in a 300kg dressed carcase. More positive EBVs indicate more subcutaneous fat and earlier maturity.

RBV%: Retail Beef Yield Percent EBV (%) represents total (boned out) meat yield as a percentage of a 300kg dressed carcase. A more positive EBV indicates higher percentage yield for the 300kg carcase size.

IMF%: Intra-muscular Fat Percent EBV (%) is an estimate of the genetic difference in the percentage of intra-muscular fat at the 12/13th rib site in a 300kg carcase. Depending on market targets, larger more positive values are generally more favourable.

Terminal index

The Shorthorn Terminal index is aimed at a commercial herd using Shorthorn bulls over dairy cross cows to breed steers and heifers to turn off at 19 months of age. All progeny are destined for slaughter and no replacement females are selected from within the herd. There is some emphasis on calving ease while finishing steers at around 580 kg live weight (310 kg carcase weight) using a pasture based production system.

Use this index in a commercial herd to produce progeny for slaughter. The index has moderate emphasis on easier calving (ie getting a live calf with minimal human interference) while producing calves that will then grow quickly to market specifications at around 19 months of age. The index is focused on slaughter animals and does not account for maternal traits and is therefore not suited to breeding replacement females.

If you are using smaller framed cows or heifers in your herd, then you should also put extra emphasis on a higher Calving Ease Direct EBV when selecting a sire using this index.

Self Replacing index - The Shorthorn Self Replacing index is aimed at a Shorthorn herd selecting replacement females from within the herd while breeding steers and excess heifers to turn off at 19 months of age. There is emphasis on calving ease and maternal traits while also looking to finish steers for slaughter at around 580 kg live weight (310 kg carcase weight) using a pasture based production system supplemented with extra rations during the finishing phase.

This Self Replacing index is also suitable to using Shorthorn sires over mixed breed cows where replacement females are sourced from within the herd. There may be some hybrid vigour expressed in the progeny depending on the breed type of the cows used. Therefore you should consider placing extra emphasis on the Calving Ease EBVs (more positive) of the sire to allow for possible heavier birth weights of his calves due to hybrid vigour.

Use this index in both commercial and pedigree herds where you are balancing the requirements of selecting replacement females while also producing animals for slaughter.

Maternal Index - The Maternal Index is designed for a commercial Beef Shorthorn cross herd that is focused on breeding herd replacements and on weaning as many and as heavy calves as possible at 8 months of age. It estimates the genetic differences between animals in net profitability per cow mated, for an example Beef Shorthorn Euro cross commercial cow herd targeting the production of pasture grown calves. Steers and heifers are weaned and marketed at an average of 350kg live weight at 8 months of age for further finishing or as replacement heifers.

The Beef Shorthorn GROUP BREEDPLAN Estimated Breeding Values contained in this Sale Catalogue were compiled by the Agricultural Business Research Institute (ABRI) from data supplied by the breeders. Neither the Beef Shorthorn Cattle Society nor the ABRI oversee or audit the collection of this data.

2021 Born Shorthorn Bulls

LOT 1 FEARN RUSSELL (P)

(683802987) AI Red & White Born:22/03/2021 UK502113-201890

Myostatin: E226X-0 , F94L-0 , NT419-0 , NT821-0

gs. DUNSRYE NORTH STAR (P) (LA0565-00444-45)

gs. FEARN CAPERCAILLIE (H) (563800740)

Sire - JACOBITE STAR OF LONGFIELD (P) (623800012)

Dam - FEARN MONIQUE L1590 (P) VG 88(643848458)

gd. CHAPELTON NETTLE 4136 (P) EX 91 (EX2)(593802672)

gd. FEARN SUZETTE D888 (P) GP 83 (573800747)

	Calving Ease DIR (%)	Calving Ease DTRS (%)	Gest. Length (days)	Birth Wt. (kg)	200 Day Wt. (kg)	400 Day Wt. (kg)	600 Day Wt. (kg)	Milk (kg)	Scrotal Score (cm)	Carcase Wt. (kg)	Eye Muscle Area (sq.cm)	Fat (mm)	Retail Beef Yield (%)	IMF (%)	Terminal Sire Index	Self Replacing Index	Maternal Index
EBV	0.1	3.1	-0.2	2.4	31	44	57	12	-0.4	43	1.5	-0.8	1.2	-0.6	41	43	24
Acc	45%	39%	50%	75%	68%	69%	66%	43%	69%	58%	48%	57%	55%	48%			
Avg 20	-0.8	-0.5	-0.2	1.7	19	31	40	6	0.2	29	1.8	-0.1	0.6	-0.1	28	28	23

Comments: His maternal grand dam Suzette D888 was an outstanding cow and his mother has bred two stock heifers and a sale bull to date. Russell was short listed for retention as a stock bull. Russell weighed 772 kg on 24/11/2022.

LOT 2 FEARN ROUSAY (P)

(683802932) Red & White Born:23/03/2021 UK502113-501893

Myostatin: E226X-0 , F94L-0 , NT419-0 , NT821-0

gs. BROUGHTON PARK THUNDER C023 (P) (KSTC023)

gs. PODEHOLE FENMAN (P) (593800904)

Sire - DAKOTA OF UPSALL (P) (573800829)

Dam - FEARN FAIRY CLIPPER J341 (P) VG 87 (623801170)

gd. JILTX435 OF UPSALL (P) (533800378)

gd. FEARN ELLE PASSION E994 (P) VG 87 (583800578)

	Calving Ease DIR (%)	Calving Ease DTRS (%)	Gest. Length (days)	Birth Wt. (kg)	200 Day Wt. (kg)	400 Day Wt. (kg)	600 Day Wt. (kg)	Milk (kg)	Scrotal Score (cm)	Carcase Wt. (kg)	Eye Muscle Area (sq.cm)	Fat (mm)	Retail Beef Yield (%)	IMF (%)	Terminal Sire Index	Self Replacing Index	Maternal Index
EBV	0.9	-1.3	1.1	3	27	47	52	10	1.8	39	3.4	0.8	0.3	0.3	38	43	30
Acc	50%	48%	55%	75%	72%	71%	68%	56%	73%	62%	52%	61%	58%	53%			
Avg 20	-0.8	-0.5	-0.2	1.7	19	31	40	6	0.2	29	1.8	-0.1	0.6	-0.1	28	28	23

Comments: His dam J341 has bred consistently well in the herd producing sons and daughters who has been very easy fleshing. Top 10% SRI and MI and top 10% on six individual traits. Rousay weighed 732 kg on 24/11/2022.

LOT 3 FEARN REMBRANDT (P)

(683802933) AI Roan Born:24/03/2021 UK502113-601894

Myostatin: E226X-0 , F94L-0 , NT419-0 , NT821-0

gs. DAKOTA OF UPSALL (P) (573800829)

gs. FEARN JIMMY (H)(ET) EX 94 (623803055)

Sire - FEARN GODFATHER (H) (603802937)

Dam - FEARN MONIQUE M1669 (P) EX 90(643851507)

gd. FEARN PASSION DIANA D965 (P) GP 83(573800760)

gd. FEARN HENRIETTA MONIQUE (P) EX 90 (613801784)

	Calving Ease DIR (%)	Calving Ease DTRS (%)	Gest. Length (days)	Birth Wt. (kg)	200 Day Wt. (kg)	400 Day Wt. (kg)	600 Day Wt. (kg)	Milk (kg)	Scrotal Score (cm)	Carcase Wt. (kg)	Eye Muscle Area (sq.cm)	Fat (mm)	Retail Beef Yield (%)	IMF (%)	Terminal Sire Index	Self Replacing Index	Maternal Index
EBV	-1.2	2.6	-0.2	3.1	32	51	67	11	1	53	6.1	0.1	2.5	-0.1	55	67	32
Acc	49%	45%	52%	75%	68%	70%	66%	45%	68%	59%	49%	59%	56%	50%			
Avg 20	-0.8	-0.5	-0.2	1.7	19	31	40	6	0.2	29	1.8	-0.1	0.6	-0.1	28	28	23

Comments: Ranked 11th in the UK on TSI in the 2021 calf crop, this Godfather son is an absolute belter! A massive 6.2 ribeye which sits amongst 6 other top 10% individual traits and outstanding SRI and MI. He also looks the part being a smart roan colour. His dam was reserve champion animal in the 2020 herd competition as a two year old with her heifer calf at foot. Dam classified EX90 and Rembrandt weighed 754 kg on 24/11/2022.

LOT 4 FERN RIBEYE (P)

(683802934) AI Red & White Born:25/03/2021 UK502113-201897

Myostatin: E226X-1 , F94L-0 , NT419-0 , NT821-0

gs. DAKOTA OF UPSALL (P) (573800829)

gs. FERN ELMER (P) (593801769)

Sire - FERN GODFATHER (H) (603802937)

Dam - FERN FAIRY CLIPPER M1641 (H) GP 83 (633805382)

gd. FERN PASSION DIANA D965 (P) GP 83(573800760)

gd. FERN PASSION GLORIA (H) EX 90 (603801159)

	Calving Ease DIR (%)	Calving Ease DTRS (%)	Gest. Length (days)	Birth Wt. (kg)	200 Day Wt. (kg)	400 Day Wt. (kg)	600 Day Wt. (kg)	Milk (kg)	Scrotal Score (cm)	Carcase Wt. (kg)	Eye Muscle Area (sq.cm)	Fat (mm)	Retail Beef Yield (%)	IMF (%)	Terminal Sire Index	Self Replacing Index	Maternal Index
EBV	-0.8	3	0.1	2.3	27	38	47	12	1.3	35	3.6	0.6	0.9	0.1	35	41	30
Acc	52%	49%	56%	77%	74%	72%	69%	51%	74%	62%	53%	62%	59%	53%			
Avg 20	-0.8	-0.5	-0.2	1.7	19	31	40	6	0.2	29	1.8	-0.1	0.6	-0.1	28	28	23

Comments: Our second Godfather son, my word he's thick, a really easy fleshing compact bull from the Fairy Clipper Family. This bull has some seriously good bulls and cows on both sides of his pedigree. Ribeye weighed 664 kg on 24/11/2022.

LOT 5 FERN RANGER (P)

(683802937) AI Roan Born:26/03/2021 UK502113-101903

Myostatin: E226X-0 , F94L-0 , NT419-0 , NT821-0

gs. DUNSYRE NORTH STAR (P) (LA0565-00444-45)

gs. FERN ELMER (P) (593801769)

Sire - JACOBITE STAR OF LONGFIELD (P) (623800012)

Dam - FERN MONIQUE L1522 (P) VG 85(643848438)

gd. CHAPELTON NETTLE 4136 (P) EX 91 (EX2)(593802672)

gd. FERN ESME MUSETTE E1030 (H) EX 91 (583800580)

	Calving Ease DIR (%)	Calving Ease DTRS (%)	Gest. Length (days)	Birth Wt. (kg)	200 Day Wt. (kg)	400 Day Wt. (kg)	600 Day Wt. (kg)	Milk (kg)	Scrotal Score (cm)	Carcase Wt. (kg)	Eye Muscle Area (sq.cm)	Fat (mm)	Retail Beef Yield (%)	IMF (%)	Terminal Sire Index	Self Replacing Index	Maternal Index
EBV	1	3.4	0	1.4	23	39	46	8	0.1	37	0.3	-0.1	0	0.3	31	31	22
Acc	47%	42%	52%	76%	73%	71%	68%	45%	72%	60%	50%	60%	57%	51%			
Avg 20	-0.8	-0.5	-0.2	1.7	19	31	40	6	0.2	29	1.8	-0.1	0.6	-0.1	28	28	23

Comments: A nicely marked roan bull, his maternal grand dam produced Jumpstart who bred really well with the Dickies before emigrating to Wales. Ranger weighed 706 kg on 24/11/2022.

LOT 6 FERN RAIDER (P)

(683802938) Red & White Born:26/03/2021 UK502113-301905

Myostatin: E226X-0 , F94L-0 , NT419-0 , NT821-0

gs. BROUGHTON PARK THUNDER C023 (P) (KSTC023)

gs. POYNTINGTON HIMSELF (P) (613800630)

Sire - DAKOTA OF UPSALL (P) (573800829)

Dam - FERN FLOSS M1636 (P) (643851516)

gd. JILTX435 OF UPSALL (P) (533800378)

gd. FERN FLOSS GERBERA (P) GP 81 (603801158)

	Calving Ease DIR (%)	Calving Ease DTRS (%)	Gest. Length (days)	Birth Wt. (kg)	200 Day Wt. (kg)	400 Day Wt. (kg)	600 Day Wt. (kg)	Milk (kg)	Scrotal Score (cm)	Carcase Wt. (kg)	Eye Muscle Area (sq.cm)	Fat (mm)	Retail Beef Yield (%)	IMF (%)	Terminal Sire Index	Self Replacing Index	Maternal Index
EBV	4.5	1.3	-0.6	1.9	33	44	52	12	-0.6	45	4	-0.1	1.5	0.1	45	50	31
Acc	51%	49%	58%	77%	74%	72%	69%	53%	73%	63%	53%	62%	59%	53%			
Avg 20	-0.8	-0.5	-0.2	1.7	19	31	40	6	0.2	29	1.8	-0.1	0.6	-0.1	28	28	23

Comments: If you are after a heifer bull this fella might be worth a look, he's got the best calving ease figure in this years sale. Again from a handy dam line and by the mighty Dakota. Raider weighed 722 kg on 24/11/2022.

LOT 7 FERN REDEMPTION (P)

(683802940) AI Red & White Born:28/03/2021 UK502113-501907
 Myostatin: E226X-0 , F94L-0 , NT419-0 , NT821-0
 gs. FERN BUNDALEER 762 (P) (553800547) gs. PODEHOLE FENMAN (P) (593800904)
 Sire - FERN ELMER (P) (593801769) Dam - FERN MONIQUE K1469 (P) EX 90(633800947)
 gd. FERN NESTA A (P) (543800642) gd. FERN PETAL B787 (P) GP 84(553800551)

	Calving Ease DIR (%)	Calving Ease DTRS (%)	Gest. Length (days)	Birth Wt. (kg)	200 Day Wt. (kg)	400 Day Wt. (kg)	600 Day Wt. (kg)	Milk (kg)	Scrotal Score (cm)	Carcase Wt. (kg)	Eye Muscle Area (sq.cm)	Fat (mm)	Retail Beef Yield (%)	IMF (%)	Terminal Sire Index	Self Replacing Index	Maternal Index
EBV	-3.8	4.1	0.6	3.7	30	48	52	12	0.4	35	0.1	-0.8	0.3	-0.3	32	28	24
Acc	48%	46%	52%	75%	72%	71%	68%	54%	74%	62%	52%	61%	59%	53%			
Avg 20	-0.8	-0.5	-0.2	1.7	19	31	40	6	0.2	29	1.8	-0.1	0.6	-0.1	28	28	23

Comments: Our only Elmer son in this years sale, the heaviest bull we have and out of K1469 who classified EX90. This cow has had five bull calves and every one of them has been kept entire for selling, you wont find a more consistent cow in our herd. Redemption weighed 838 kg on 24/11/2022

LOT 8 FERN RUSTLER (P)

(683802941) Red Born:29/03/2021 UK502113-601908
 Myostatin: E226X-0 , F94L-0 , NT419-0 , NT821-0
 gs. BROUGHTON PARK THUNDER C023 (P) (KSTC023) gs. PODEHOLE FENMAN (P) (593800904)
 Sire - DAKOTA OF UPSALL (P) (573800829) Dam - FERN FAIRY CLIPPER J390 (P) EX 92 (EX2)(623801161)
 gd. JILTX435 OF UPSALL (P) (533800378) gd. FERN PASSION DIANA D965 (P) GP 83 (573800760)

	Calving Ease DIR (%)	Calving Ease DTRS (%)	Gest. Length (days)	Birth Wt. (kg)	200 Day Wt. (kg)	400 Day Wt. (kg)	600 Day Wt. (kg)	Milk (kg)	Scrotal Score (cm)	Carcase Wt. (kg)	Eye Muscle Area (sq.cm)	Fat (mm)	Retail Beef Yield (%)	IMF (%)	Terminal Sire Index	Self Replacing Index	Maternal Index
EBV	3.3	1.1	0.5	1.6	21	45	49	11	1.7	42	3.6	0.2	1	0.2	40	44	26
Acc	50%	48%	55%	75%	72%	71%	68%	56%	72%	62%	52%	61%	59%	53%			
Avg 20	-0.8	-0.5	-0.2	1.7	19	31	40	6	0.2	29	1.8	-0.1	0.6	-0.1	28	28	23

Comments: Another Dakota son with good calving figures, his dam classified EX92 and she's had a bull in the sale last year with Parris making the grade and her grandson Rowland also makes the sale this time. Rustler weighed 732 kg on 24/11/2022.

LOT 9 FERN RHUAIRIDH (P)

(683802942) Red & White Born:29/03/2021 UK502113-701909
 Myostatin: E226X-0 , F94L-0 , NT419-0 , NT821-0
 gs. BROUGHTON PARK THUNDER C023 (P) (KSTC023) gs. FERN ELMER (P) (593801769)
 Sire - DAKOTA OF UPSALL (P) (573800829) Dam - FERN HENRIETTA MONIQUE (P) EX 90 (613801784)
 gd. JILTX435 OF UPSALL (P) (533800378) gd. FERN WISTERIA Y (H) (523800671)

	Calving Ease DIR (%)	Calving Ease DTRS (%)	Gest. Length (days)	Birth Wt. (kg)	200 Day Wt. (kg)	400 Day Wt. (kg)	600 Day Wt. (kg)	Milk (kg)	Scrotal Score (cm)	Carcase Wt. (kg)	Eye Muscle Area (sq.cm)	Fat (mm)	Retail Beef Yield (%)	IMF (%)	Terminal Sire Index	Self Replacing Index	Maternal Index
EBV	2.8	2.4	-0.6	2.8	40	59	72	13	-0.2	54	2.6	-0.2	0.9	0.2	54	57	30
Acc	50%	48%	55%	75%	72%	71%	68%	55%	72%	62%	53%	61%	59%	54%			
Avg 20	-0.8	-0.5	-0.2	1.7	19	31	40	6	0.2	29	1.8	-0.1	0.6	-0.1	28	28	23

Comments: This bulls a Stoater! An outstanding example of the breed in every way, awesome figures, 13th on TSI in the country, 1st prize bull born 2021 in the Scottish herd competition and his dam classified EX90. Without doubt one of the best bulls we have offered for sale and we thought long and hard about retaining him for our own use, he oozes style and is as close a carbon copy to Dakota as you will get, he's just a little lighter. Rhuairidh weighed 836 kg on 24/11/2022.

LOT 10 FERN REMUS (P)

(683802943) Red & White Born:30/03/2021 UK502113-401913

Myostatin: E226X-0 , F94L-0 , NT419-0 , NT821-0

gs. BROUGHTON PARK THUNDER C023 (P) (KSTC023)

gs. PODEHOLE FENMAN (P) (593800904)

Sire - DAKOTA OF UPSALL (P) (573800829)

Dam - FERN MONIQUE J322 (P) VG 89(623801151)

gd. JILTX435 OF UPSALL (P) (533800378)

gd. FERN FRANCESCA DELIA F107 (P) EX 94 (593802394)

	Calving Ease DIR (%)	Calving Ease DTRS (%)	Gest. Length (days)	Birth Wt. (kg)	200 Day Wt. (kg)	400 Day Wt. (kg)	600 Day Wt. (kg)	Milk (kg)	Scrotal Score (cm)	Carcase Wt. (kg)	Eye Muscle Area (sq.cm)	Fat (mm)	Retail Beef Yield (%)	IMF (%)	Terminal Sire Index	Self Replacing Index	Maternal Index
EBV	3.1	-0.7	0.9	1.6	19	37	39	9	0.9	33	2.9	0.5	0.7	-0.2	32	36	26
Acc	49%	47%	55%	75%	72%	71%	68%	55%	73%	61%	52%	60%	58%	52%			
Avg 20	-0.8	-0.5	-0.2	1.7	19	31	40	6	0.2	29	1.8	-0.1	0.6	-0.1	28	28	23

Comments: Another Dakota son with an outstanding topline, this one is out of the Monique family and goes back to Petal, one of the most influential cows we have had in the herd. Remus weighed 748 kg on 24/11/2022

LOT 11 FERN RESOLIS (P)

(683802944) AI Roan Born:30/03/2021 UK502113-501914

Myostatin: E226X-0 , F94L-0 , NT419-0 , NT821-0

gs. DUNSYRE NORTH STAR (P) (LA0565-00444-45)

gs. FERN ELMER (P) (593801769)

Sire - JACOBITE STAR OF LONGFIELD (P) (623800012)

Dam - FERN FAIRY CLIPPER L1551 (P) VG 89 (643848462)

gd. CHAPELTON NETTLE 4136 (P) EX 91 (EX2)(593802672)

gd. FERN PASSION GEORGIE (P) VG 86 (603801162)

	Calving Ease DIR (%)	Calving Ease DTRS (%)	Gest. Length (days)	Birth Wt. (kg)	200 Day Wt. (kg)	400 Day Wt. (kg)	600 Day Wt. (kg)	Milk (kg)	Scrotal Score (cm)	Carcase Wt. (kg)	Eye Muscle Area (sq.cm)	Fat (mm)	Retail Beef Yield (%)	IMF (%)	Terminal Sire Index	Self Replacing Index	Maternal Index
EBV	2.3	0	-0.3	1.9	29	52	63	8	0.5	51	2.3	-0.6	0.9	0.1	46	46	22
Acc	47%	42%	53%	76%	73%	71%	68%	46%	72%	61%	51%	60%	58%	52%			
Avg 20	-0.8	-0.5	-0.2	1.7	19	31	40	6	0.2	29	1.8	-0.1	0.6	-0.1	28	28	23

Comments: A big roan Jacobite Star Of Longfield son, who has Dakota and Elmer in his breeding. His dam is a consistent breeder with two heifers retained in the herd and her 2022 born calf by Godfather is one of the pick of the crop. Resolis weighed 814 kg on 24/11/2022.

LOT 12 FERN RIGHTEOUS (P)

(683802945) Red & White Born:30/03/2021 UK502113-601915

Myostatin: E226X-0 , F94L-0 , NT419-0 , NT821-0

gs. BROUGHTON PARK THUNDER C023 (P) (KSTC023)

gs. PODEHOLE FENMAN (P) (593800904)

Sire - DAKOTA OF UPSALL (P) (573800829)

Dam - FERN MONIQUE J345 (P) VG 89 (623801154)

gd. JILTX435 OF UPSALL (P) (533800378)

gd. FERN MUSETTE B774 (P) EX 92 (553800548)

	Calving Ease DIR (%)	Calving Ease DTRS (%)	Gest. Length (days)	Birth Wt. (kg)	200 Day Wt. (kg)	400 Day Wt. (kg)	600 Day Wt. (kg)	Milk (kg)	Scrotal Score (cm)	Carcase Wt. (kg)	Eye Muscle Area (sq.cm)	Fat (mm)	Retail Beef Yield (%)	IMF (%)	Terminal Sire Index	Self Replacing Index	Maternal Index
EBV	4.1	2.2	0.7	1.5	21	46	50	7	1.1	42	2.8	0.2	0.7	0	39	44	27
Acc	49%	47%	55%	75%	72%	71%	67%	55%	72%	60%	44%	60%	56%	52%			
Avg 20	-0.8	-0.5	-0.2	1.7	19	31	40	6	0.2	29	1.8	-0.1	0.6	-0.1	28	28	23

Comments: Another Dakota son with cracking calving figures. According to Ian Park this bulls looks just like Dakota when he was younger. His maternal grand dam was a tremendous cow which classified EX92 and was one of the most consistent breeders we had. Righteous weighed 734 kg on 24/11/2022.

LOT 13 FERN RASSAY (P)

(683802946) Roan Born:01/04/2021 UK502113-401920

Myostatin: E226X-0 , F94L-0 , NT419-0 , NT821-0

gs. GLENISLA GUARDSMAN II (P) (603800699)

gs. MEONHILL HIGHLAND CAPTAIN (P) (563801549)

Sire - DUNSYRE NIGHTRIDER (P) (663801295)

Dam - FERN FLANNAWISTERIA F1114 (P) EX 90 (593802402)

gd. DUNSYRE MAGIC 10TH (P) G 77(573801958)

gd. FERN WISTERIA Y (H) (523800671)

	Calving Ease DIR (%)	Calving Ease DTRS (%)	Gest. Length (days)	Birth Wt. (kg)	200 Day Wt. (kg)	400 Day Wt. (kg)	600 Day Wt. (kg)	Milk (kg)	Scrotal Score (cm)	Carcase Wt. (kg)	Eye Muscle Area (sq.cm)	Fat (mm)	Retail Beef Yield (%)	IMF (%)	Terminal Sire Index	Self Replacing Index	Maternal Index
EBV	1.1	1	-0.3	1.9	19	25	35	6	-0.2	29	4.5	0.3	2.1	-0.8	33	45	30
Acc	39%	35%	45%	73%	70%	67%	64%	44%	70%	56%	45%	55%	52%	44%			
Avg 20	-0.7	-0.3	-0.1	1.7	19	31	39	6	0.2	28	1.8	-0.1	0.6	-0.1	27	27	23

Comments: One of three Dunsyre Nightrider sons in the sale this time out of an easy fleshing roan cow which classified EX90. Rassay weighed 702 kg on 24/11/2022.

LOT 14 FERN RHYNIE (P)

(683802947) AI Dark Roan Born:03/04/2021 UK502113-701923

Myostatin: E226X-0 , F94L-0 , NT419-0 , NT821-0

gs. DUNSYRE NORTH STAR (P) (LA0565-00444-45)

gs. FERN ELMER (P) (593801769)

Sire - JACOBITE STAR OF LONGFIELD (P) (623800012)

Dam - FERN HARPER MONIQUE (P) EX 91 (EX2)(613801795)

gd. CHAPELTON NETTLE 4136 (P) EX 91 (EX2)(593802672)

gd. FERN MUSETTE Y (P) (523800675)

	Calving Ease DIR (%)	Calving Ease DTRS (%)	Gest. Length (days)	Birth Wt. (kg)	200 Day Wt. (kg)	400 Day Wt. (kg)	600 Day Wt. (kg)	Milk (kg)	Scrotal Score (cm)	Carcase Wt. (kg)	Eye Muscle Area (sq.cm)	Fat (mm)	Retail Beef Yield (%)	IMF (%)	Terminal Sire Index	Self Replacing Index	Maternal Index
EBV	-1.2	1.5	0.1	2.8	30	44	57	8	-0.1	42	1.1	-1	1.2	-0.4	40	41	23
Acc	47%	42%	52%	76%	72%	69%	67%	48%	53%	58%	42%	52%	50%	47%			
Avg 20	-0.8	-0.5	-0.2	1.7	19	31	40	6	0.2	29	1.8	-0.1	0.6	-0.1	28	28	23

Comments: Out of a big EX91 classified dark roan cow who was a consistent breeder over the years, all male and female calves have made the grade. Rhynie weighed 742 kg on 24/11/2022.

LOT 15 FERN RANFURLY (P)

(693800438) Red & White Born:07/04/2021 UK502113-701937

Myostatin: E226X-0 , F94L-1 , NT419-0 , NT821-0

gs. GLENISLA GUARDSMAN II (P) (603800699)

gs. BROUGHTON PARK DIPLOMAT D103 (P) (AUKSTD103)

Sire - DUNSYRE NIGHTRIDER (P) (663801295)

Dam - FERN BONNY J358 (P) VG 86(623801167)

gd. DUNSYRE MAGIC 10TH (P) G 77(573801958)

gd. AUSTINS BONNY 08064 (P) (200208064)

	Calving Ease DIR (%)	Calving Ease DTRS (%)	Gest. Length (days)	Birth Wt. (kg)	200 Day Wt. (kg)	400 Day Wt. (kg)	600 Day Wt. (kg)	Milk (kg)	Scrotal Score (cm)	Carcase Wt. (kg)	Eye Muscle Area (sq.cm)	Fat (mm)	Retail Beef Yield (%)	IMF (%)	Terminal Sire Index	Self Replacing Index	Maternal Index
EBV	-0.1	-0.2	-0.8	2.9	31	47	56	11	0	45	5.1	0.5	1.6	0.1	45	50	30
Acc	37%	33%	41%	73%	64%	66%	63%	42%	64%	54%	43%	53%	50%	43%			
Avg 20	-0.8	-0.5	-0.2	1.7	19	31	40	6	0.2	29	1.8	-0.1	0.6	-0.1	28	28	23

Comments: An intriguing mix of UK and Antipodean genetics, a long clean well-muscled bull which would suit most beef herds. This fella would be our pick of the Nightrider sons and is half brother to last years top price bull, Peroni. His dam also has three daughters retained in the herd. Ranfurly weighed 782 kg on 24/11/2022.

LOT 16 FEARN RANGINUI (P)

(683802950) Light Roan Born:14/04/2021 UK502113-301947

Myostatin: E226X-0 , F94L-1 , NT419-0 , NT821-0

gs. GLENISLA GUARDSMAN II (P) (603800699)

gs. BROOME POWERPACK F90 AUS (P) (AUL2F90)

Sire - DUNSYRE NIGHTRIDER (P) (663801295)

Dam - FEARN ISOBEL K1440 (P)(ET) GP 81(633804244)

gd. DUNSYRE MAGIC 10TH (P) G 77(573801958)

gd. AUSTINS ISOBEL 01 98 AUS (P) (200201098)

	Calving Ease DIR (%)	Calving Ease DTRS (%)	Gest. Length (days)	Birth Wt. (kg)	200 Day Wt. (kg)	400 Day Wt. (kg)	600 Day Wt. (kg)	Milk (kg)	Scrotal Score (cm)	Carcase Wt. (kg)	Eye Muscle Area (sq.cm)	Fat (mm)	Retail Beef Yield (%)	IMF (%)	Terminal Sire Index	Self Replacing Index	Maternal Index
EBV	2.4	-1.6	-1	1.5	22	34	41	10	0.4	34	4.1	0.6	1.6	-0.6	36	43	29
Acc	34%	29%	42%	72%	68%	66%	62%	39%	68%	53%	42%	52%	49%	40%			
Avg 20	-0.8	-0.5	-0.2	1.7	19	31	40	6	0.2	29	1.8	-0.1	0.6	-0.1	28	28	23

Comments: A big stretchy Nightrider son out of a seriously thick, powerful NZ Isobel cow, if you have cows that you would like to frame score to this bulls worth considering. Ranginui weighed 762 kg on 24/11/2022.

LOT 17 FEARN ROWLAND (P)

(683802951) Roan Born:14/04/2021 UK502113-401948

Myostatin: E226X-0 , F94L-0 , NT419-0 , NT821-0

gs. MANDALONG SUPER ELEPHANT (P) (354455)

gs. FEARN JONO (P)(ET) (623803051)

Sire - FIREFOX OF UPSALL (P) EX 93(593801329)

Dam - FEARN FAIRY CLIPPER M1662 (P) VG 86 (643851515)

gd. CLIPPER X699 OF UPSALL (P) GP 83(573800142)

gd. FEARN FAIRY CLIPPER J390 (P) EX 92 (EX2)(623801161)

	Calving Ease DIR (%)	Calving Ease DTRS (%)	Gest. Length (days)	Birth Wt. (kg)	200 Day Wt. (kg)	400 Day Wt. (kg)	600 Day Wt. (kg)	Milk (kg)	Scrotal Score (cm)	Carcase Wt. (kg)	Eye Muscle Area (sq.cm)	Fat (mm)	Retail Beef Yield (%)	IMF (%)	Terminal Sire Index	Self Replacing Index	Maternal Index
EBV	9	6.6	-0.2	-0.6	8	13	16	7	0.7	16	1.3	0.4	0.1	0.2	17	25	25
Acc	46%	41%	50%	75%	72%	70%	67%	48%	72%	60%	49%	59%	56%	50%			
Avg 20	-0.8	-0.5	-0.2	1.7	19	31	40	6	0.2	29	1.8	-0.1	0.6	-0.1	28	28	23

Comments: Our only Firefox of Upsall bull on offer this year, an easy fleshed dark roan bull which would be ideal for heifers. His maternal brother Platinum was one of last year's top bulls. Rowland weighed 668 kg on 24/11/2022.

LOT 18 FEARN REBUS (P)

(683802952) Dark Roan Born:24/04/2021 UK502113-101959

Myostatin: E226X-0 , F94L-0 , NT419-0 , NT821-0

gs. CUAN LOCKYER 266 (P)(ET) (623801684)

gs. DAKOTA OF UPSALL (P) (573800829)

Sire - FEARN MONARCH (P) (643852457)

Dam - FEARN GEMMA WISTERIA G1177 (P) EX 91 (633804199)

gd. FEARN BONNY K1474 (P) VG 86(633802443)

gd. FEARN EMMA WISTERIA E1007 (P) (583800577)

	Calving Ease DIR (%)	Calving Ease DTRS (%)	Gest. Length (days)	Birth Wt. (kg)	200 Day Wt. (kg)	400 Day Wt. (kg)	600 Day Wt. (kg)	Milk (kg)	Scrotal Score (cm)	Carcase Wt. (kg)	Eye Muscle Area (sq.cm)	Fat (mm)	Retail Beef Yield (%)	IMF (%)	Terminal Sire Index	Self Replacing Index	Maternal Index
EBV	1.5	2.2	-0.6	1.4	26	48	58	10	1.3	44	2.9	0.3	0.7	-0.1	42	45	26
Acc	39%	34%	45%	74%	71%	69%	65%	38%	72%	58%	48%	57%	55%	47%			
Avg 20	-0.8	-0.5	-0.2	1.7	19	31	40	6	0.2	29	1.8	-0.1	0.6	-0.1	28	28	23

Comments: Our only offering sired by Fearn Monarch who had two of the top three bull prices last year and the top priced heifer. His dam is classified EX91 and has always bred well, she's the grand dam of Royal Flush the bull we have decided to retain this year. Rebus weighed 714 kg on 24/11/2022.

LOT 19 FEARN RODNEY (P)

(NON - REGISTERED)

Born:17/03/2021

UK502113-501879

gs. SUTHERLAND BUNDABERG ET (P) (X-3959923)

gs. FEARN GODFATHER (H) (603802937)

Sire - DUNSYRE NIMROD (P) (663800743)

Dam - FEARN FAIRY CLIPPER N1703 (P) GP 82 (663800814)

gd. DUNSYRE GIGHA 18TH (P) EX 90(583800822)

gd. FEARN ELIZABETH PASSION E1050 (P)
VG 88 (583800642)

Comments: A smart easy fleshed light roan bull by Dunsyre Nimrod, suitable for heifers. His grand dam bred bulls up to £10k. Rodney weighed 674 kg on 24/11/2022.



FEARN · FARM



**THE ONLY BRAND WITH A
7-YEAR WARRANTY
ON ALL ENERGIZERS**



**To Order Please Call: 01862 832522 or
Email: admin@fearnfarm.com**

2021 Born Grade Up Shorthorn Bulls

LOT 20 FEARN ROMANO (H)

(683802949) Red & White Born:13/04/2021 UK502113-201946

Myostatin: E226X-0 , F94L-0 , NT419-0 , NT821-0

gs. BROUGHTON PARK DIPLOMAT D103 (P) (AUKSTD103)

gs. PODEHOLE FENMAN (P) (593800904)

Sire - FEARN JIMMY (H)(ET) EX 94(623803055)

Dam - FEARN ABBEY K1495 (P) EX 91(633800955)

gd. AUSTINS BONNY 08064 (P) (200208064)

gd. UK502113-400611 (UK502113-400611)

	Calving Ease DIR (%)	Calving Ease DTRS (%)	Gest. Length (days)	Birth Wt. (kg)	200 Day Wt. (kg)	400 Day Wt. (kg)	600 Day Wt. (kg)	Milk (kg)	Scrotal Score (cm)	Carcase Wt. (kg)	Eye Muscle Area (sq.cm)	Fat (mm)	Retail Beef Yield (%)	IMF (%)	Terminal Sire Index	Self Replacing Index	Maternal Index
EBV	-1.1	-2.3	-1.2	2.4	33	41	47	10	0.7	35	2.6	0.2	0.9	-0.1	35	39	33
Acc	40%	38%	44%	74%	70%	69%	65%	43%	69%	57%	46%	57%	54%	47%			
Avg 20	-0.8	-0.5	-0.2	1.7	19	31	40	6	0.2	29	1.8	-0.1	0.6	-0.1	28	28	23

Comments: By our former stock bull Fearn Jimmy who left outstanding females and a EX91 classified grade up cow, this bull would be a great choice for breeding commercial cows. Romano weighed 818 kg on 24/11/2022.

LOT 21 FEARN RIPPER

(NON - REGISTERED) Born:05/04/2021 UK502113-101931

gs. GLENISLA GUARDSMAN II (P) (603800699)

gs. FEARN JIMMY (H) (ET) EX 94 (623803055)

Sire - DUNSYRE NIGHTRIDER (P) (663801295)

Dam - FEARN ABBEY M1642 (H) GP 80 (643851501)

gd. DUNSYRE MAGIC 10TH (P) G 77(573801958)

gd. FEARN ABBEY K1495 (P) EX91 (633800955)

Comments: Ripper, a Nightrider son, is a long red bull ideal for cross cows. Ripper weighed 768 kg on 24/11/2022.

LOT 22 FEARN REGGIE

(NON - REGISTERED) Born:20/03/2021 UK502113-701888

gs. BROUGHTON PARK DIPLOMAT D103 (P) (AUKSTD103)

gs. FEARN ELMER (P) (593801769)

Sire - FEARN JIMMY (H)(ET) EX 94(623803055)

Dam - UK502113-201281

gd. AUSTINS BONNY 08064 (P) (200208064)

gd. UK502113-201281

Comments: 7/8th Non-Registered Beef Shorthorn. Reggie combines Jimmy and Elmer genetics, an excellent combination for commercial cows. Reggie weighed 798 kg on 24/11/2022.



LOT 1 - FEARN RUSSELL (P)



LOT 2 - FEARN ROUSAY (P)



LOT 3 - FEARN REMBRANDT (P)



LOT 4 - FEARN RIBEYE (P)



LOT 5 - FEARN RANGER (P)



LOT 6 - FEARN RAIDER (P)



LOT 7 - FEARN REDEMPTION (P)



LOT 8 - FEARN RUSTLER (P)



LOT 9 - FEARN RHUAIRIDH (P)



LOT 10 - FEARN REMUS (P)



LOT 11 - FEARN RESOLIS (P)



LOT 12 - FEARN RIGHTEOUS (P)



LOT 13 - FEARN RASSAY (P)



LOT 14 - FEARN RHYNIE (P)



LOT 15 - FEARN RANFURLY (P)



LOT 16 - FEARN RANGINUI (P)



LOT 17 - FEARN ROWLAND (P)



LOT 18 - FEARN REBUS (P)



LOT 19 - FEARN RODNEY (P)



LOT 20 - FEARN ROMANO (H)



LOT 21 - FEARN RIPPER



LOT 22 - FEARN REGGIE



LOT 23 - FEARN MONIQUE R1881 (P)



LOT 24 - FEARN MONIQUE R1911 (P)



LOT 25 - FEARN MONIQUE R1925 (P)



LOT 26 - FEARN MONIQUE R1941 (P)



LOT 27 - FEARN SILVER MAISIE R1953 (P)



LOT 28 - FEARN FAIRY CLIPPER R1954 (P)



LOT 29 - FEARN ABBEY R1898 (P)



LOT 30 - UK502113-201904



LOT 31 - UK502113-601922



LOT 32 - FEARN SILVER MAISIE P1803 (P) & FEARN SILVER MAISIE S2066 (P)

2021 Born In-Calf Shorthorn Heifers

LOT 23 FEARN MONIQUE R1881 (P)

(683802402) **Roan** **Born:17/03/2021** **UK502113-701881**
 gs. SUTHERLAND BUNDABERG ET (P) (X-3959923) gs. FEARN LAIRD (P) (643849207)
Sire - DUNSYRE NIMROD (P) (663800743) **Dam - FEARN MONIQUE N1731 (P) VG 86(663800800)**
 gd. DUNSYRE GIGHA 18TH (P) EX 90(583800822) gd. FEARN MONIQUE L1519 (H) VG 85 (643848437)

	Calving Ease DIR (%)	Calving Ease DTRS (%)	Gest. Length (days)	Birth Wt. (kg)	200 Day Wt. (kg)	400 Day Wt. (kg)	600 Day Wt. (kg)	Milk (kg)	Scrotal Score (cm)	Carcase Wt. (kg)	Eye Muscle Area (sq.cm)	Fat (mm)	Retail Beef Yield (%)	IMF (%)	Terminal Sire Index	Self Replacing Index	Maternal Index
EBV	1.1	-0.9	-2.5	2.4	34	50	65	11	1.1	48	3.9	-0.4	1.7	0	51	57	30
Acc	40%	35%	47%	72%	69%	67%	63%	40%	34%	55%	41%	60%	56%	51%			
Avg 20	-0.8	-0.5	-0.2	1.7	19	31	40	6	0.2	29	1.8	-0.1	0.6	-0.1	28	28	23

Notes: Ran with Redhill Priddy (17/06/2022 - 31/07/2022). Scanned in calf on 16/09/2022 - Due 17/04/2023

LOT 24 FEARN MONIQUE R1911 (P)

(693800118) **Roan** **Born:29/03/2021** **UK502113-201911**
 gs. SUTHERLAND BUNDABERG ET (P) (X-3959923) gs. FEARN GODFATHER (H) (603802937)
Sire - DUNSYRE NIMROD (P) (663800743) **Dam - FEARN MONIQUE N1712 (H) GP 83(663800796)**
 gd. DUNSYRE GIGHA 18TH (P) EX 90(583800822) gd. FEARN MONIQUE J344 (P) EX 91 (623801153)

	Calving Ease DIR (%)	Calving Ease DTRS (%)	Gest. Length (days)	Birth Wt. (kg)	200 Day Wt. (kg)	400 Day Wt. (kg)	600 Day Wt. (kg)	Milk (kg)	Scrotal Score (cm)	Carcase Wt. (kg)	Eye Muscle Area (sq.cm)	Fat (mm)	Retail Beef Yield (%)	IMF (%)	Terminal Sire Index	Self Replacing Index	Maternal Index
EBV	-0.6	-1.3	-1.3	2.3	24	34	45	9	0.8	31	2.9	-0.4	1.4	-0.4	35	39	26
Acc	42%	37%	47%	72%	66%	63%	61%	40%	35%	52%	40%	56%	52%	48%			
Avg 20	-0.8	-0.5	-0.2	1.7	19	31	40	6	0.2	29	1.8	-0.1	0.6	-0.1	28	28	23

Notes: Ran with Redhill Priddy (17/06/2022 - 31/07/2022). Scanned in calf on 16/09/2022 - Due 07/04/2023

LOT 25 FEARN MONIQUE R1925 (H)

(683801977) **Dark Roan** **Born:02/04/2021** **UK502113-201925**
 gs. GLENISLA GUARDSMAN II (P) (603800699) gs. FEARN ELMER (P) (593801769)
Sire - DUNSYRE NIGHTRIDER (P) (663801295) **Dam - FEARN MONIQUE K1468 (P) EX 91(633800946)**
 gd. DUNSYRE MAGIC 10TH (P) G 77(573801958) gd. FEARN FI FI SUZETTE F1094 (H) GP 83 (593802399)

	Calving Ease DIR (%)	Calving Ease DTRS (%)	Gest. Length (days)	Birth Wt. (kg)	200 Day Wt. (kg)	400 Day Wt. (kg)	600 Day Wt. (kg)	Milk (kg)	Scrotal Score (cm)	Carcase Wt. (kg)	Eye Muscle Area (sq.cm)	Fat (mm)	Retail Beef Yield (%)	IMF (%)	Terminal Sire Index	Self Replacing Index	Maternal Index
EBV	0	4.3	-0.8	2.7	30	43	50	14	-0.1	37	2.6	0.1	1	-0.6	37	41	27
Acc	37%	32%	44%	73%	69%	67%	63%	40%	43%	55%	42%	60%	56%	51%			
Avg 20	-0.8	-0.5	-0.2	1.7	19	31	40	6	0.2	29	1.8	-0.1	0.6	-0.1	28	28	23

Notes: Ran with Redhill Priddy (17/06/2022 - 31/07/2022). Scanned in calf on 16/09/2022 - Due 12/04/2023

LOT 26 FERN MONIQUE R1941 (P)

(683801982) Red & Little White Born:08/04/2021 UK502113-401941
 gs. BROUGHTON PARK DIPLOMAT D103 (P) (AUKSTD103) gs. PODEHOLE FENMAN (P) (593800904)
Sire - FERN JIMMY (H)(ET) EX 94(623803055) Dam - FERN MONIQUE J344 (P) EX 91(623801153)
 gd. AUSTINS BONNY 08064 (P) (200208064) gd. FERN MONIQUE GAIL (H) GP 82 (603801164)

	Calving Ease DIR (%)	Calving Ease DTRS (%)	Gest. Length (days)	Birth Wt. (kg)	200 Day Wt. (kg)	400 Day Wt. (kg)	600 Day Wt. (kg)	Milk (kg)	Scrotal Score (cm)	Carcase Wt. (kg)	Eye Muscle Area (sq.cm)	Fat (mm)	Retail Beef Yield (%)	IMF (%)	Terminal Sire Index	Self Replacing Index	Maternal Index
EBV	-5	-3	0.5	3.4	26	35	46	6	0.2	31	3.4	-0.3	1.5	-0.3	33	33	27
Acc	41%	38%	44%	74%	69%	69%	65%	44%	44%	57%	42%	61%	57%	52%			
Avg 20	-0.8	-0.5	-0.2	1.7	19	31	40	6	0.2	29	1.8	-0.1	0.6	-0.1	28	28	23

Notes: Ran with Redhill Priddy (17/06/2022 - 31/07/2022). Scanned in calf on 16/09/2022 - Due 22/04/2023

LOT 27 FERN SILVER MAISIE R1953 (P)

(683801986) Dark Roan Born:18/04/2021 UK502113-201953
 gs. MANDALONG SUPER ELEPHANT (P) (354455) gs. FERN JIMMY (H)(ET) EX 94 (623803055)
Sire - FIREFOX OF UPSALL (P) EX 93(593801329) Dam - FERN SILVER MAISIE M1627 (H) VG 86 (643851496)
 gd. CLIPPER X699 OF UPSALL (P) GP 83(573800142) gd. FERN SILVER MAISIE K1433 (H) VG 88 (633800943)

	Calving Ease DIR (%)	Calving Ease DTRS (%)	Gest. Length (days)	Birth Wt. (kg)	200 Day Wt. (kg)	400 Day Wt. (kg)	600 Day Wt. (kg)	Milk (kg)	Scrotal Score (cm)	Carcase Wt. (kg)	Eye Muscle Area (sq.cm)	Fat (mm)	Retail Beef Yield (%)	IMF (%)	Terminal Sire Index	Self Replacing Index	Maternal Index
EBV	7.3	4.8	-0.6	0.7	19	22	32	5	0.3	20	0.2	0	-0.4	0.5	24	26	23
Acc	45%	40%	49%	74%	71%	70%	66%	46%	47%	59%	46%	63%	60%	55%			
Avg 20	-0.8	-0.5	-0.2	1.7	19	31	40	6	0.2	29	1.8	-0.1	0.6	-0.1	28	28	23

Notes: Ran with Dunsyre Nimrod (17/06/2022 - 01/07/2022) and Redhill Priddy (01/07/2022 - 31/07/2022). Scanned in calf on 16/09/2022 - Due 17/04/2023

LOT 28 FERN FAIRY CLIPPER R1954 (P)

(683801987) Dark Roan Born:19/04/2021 UK502113-301954
 gs. MANDALONG SUPER ELEPHANT (P) (354455) gs. FERN JONO (P)(ET) (623803051)
Sire - FIREFOX OF UPSALL (P) EX 93(593801329) Dam - FERN FAIRY CLIPPER M1645 (P) GP 82 (643851517)
 gd. CLIPPER X699 OF UPSALL (P) GP 83(573800142) gd. FERN FAIRY CLIPPER J321 (P) VG 87 (623801172)

	Calving Ease DIR (%)	Calving Ease DTRS (%)	Gest. Length (days)	Birth Wt. (kg)	200 Day Wt. (kg)	400 Day Wt. (kg)	600 Day Wt. (kg)	Milk (kg)	Scrotal Score (cm)	Carcase Wt. (kg)	Eye Muscle Area (sq.cm)	Fat (mm)	Retail Beef Yield (%)	IMF (%)	Terminal Sire Index	Self Replacing Index	Maternal Index
EBV	9.5	5.8	0	-0.6	7	10	9	6	0.2	12	1	0.9	-0.3	0.1	12	20	26
Acc	46%	41%	50%	75%	71%	70%	67%	48%	49%	60%	47%	64%	60%	56%			
Avg 20	-0.7	-0.3	-0.1	1.7	19	31	39	6	0.2	28	1.8	-0.1	0.6	-0.1	27	27	23

Notes: Ran with Dunsyre Nimrod (17/06/2022 - 01/07/2022) and Redhill Priddy (01/07/2022 - 31/07/2022). Scanned in calf on 16/09/2022 - Due 12/04/2023

2021 Born In-Calf Grade Up Shorthorn Heifer

LOT 29 FEARN ABBEY R1898 (P)

(683802406) Roan Born:25/03/2021 UK502113-301898
 gs. SUTHERLAND BUNDABERG ET (P) (X-3959923) gs. FEARN GODFATHER (H) (603802937)
 Sire - DUNSYRE NIMROD (P) (663800743) Dam - FEARN ABBEY N1733 (H) VG 86(663800801)
 gd. DUNSYRE GIGHA 18TH (P) EX 90(583800822) gd. FEARN ABBEY K1495 (P) EX 91 (633800955)

	Calving Ease DIR (%)	Calving Ease DTRS (%)	Gest. Length (days)	Birth Wt. (kg)	200 Day Wt. (kg)	400 Day Wt. (kg)	600 Day Wt. (kg)	Milk (kg)	Scrotal Score (cm)	Carcase Wt. (kg)	Eye Muscle Area (sq.cm)	Fat (mm)	Retail Beef Yield (%)	IMF (%)	Terminal Sire Index	Self Replacing Index	Maternal Index
EBV	-1.5	-2.2	-2.1	1.9	28	38	48	12	1	33	2.3	-0.3	0.9	0	34	33	26
Acc	42%	37%	47%	72%	69%	67%	63%	41%	35%	55%	42%	60%	55%	44%			
Avg 20	-0.8	-0.5	-0.2	1.7	19	31	40	6	0.2	29	1.8	-0.1	0.6	-0.1	28	28	23

Notes: Ran with Redhill Priddy (17/06/2022 - 31/07/2022). Scanned in calf on 16/09/2022 - Due 07/05/2023



FEARN · FARM



Aberfield, Texel, Suftex,
 Suftel, Beltex, &
 NZ Suffolk Rams and
 Breeding Females

Sale On-Farm with online
 bidding via Yourbid

MV Accredited, Hi-
 Health & Performance
 Recorded

**GREAT FROM GRASS SALE
 FRIDAY 25TH AUGUST 2023**

2021 Born In-Calf Shorthorn Cross Heifers

LOT 30 UK502113-201904

(Beef Shorthorn Cross Heifer)

Born: 26/03/2021

UK502113-201904

gs. CUAN LOCKYER 266 (P)(ET) (623801684)

gs. FEARN ELMER (P) (593801769)

Sire - FEARN MONARCH (P) (643852457)

Dam - UK502113-601635

gd. FEARN BONNY K1474 (P) VG 86(633802443)

gd. UK502113-401101

Notes: Ran with Dunsyre Nimrod (17/06/2022 - 01/07/2022) and Redhill Priddy (01/07/2022 - 31/07/2022). Scanned in calf on 16/09/2022 - Due 17/05/2022

LOT 31 UK502113-601922

(Beef Shorthorn Cross Heifer)

Born: 02/04/2021

UK502113-601922

gs. BROUGHTON PARK DIPLOMAT D103 (P) (AUKSTD103)

gs. MEONHILL HIGHLAND CAPTAIN (P)
(563801549)

Sire - FEARN JIMMY (H)(ET) EX 94 (623803055)

Dam - UK502113-201281

gd. AUSTINS BONNY 08064 (P) (200208064)

gd. UK502113-101000

Notes: Ran with Redhill Priddy (17/06/2022 - 31/07/2022). Scanned in calf on 16/09/2022 - Due 17/04/2023

Allan W J Wilson Ltd
Tel Stuart: 07810711425



In-Calf Shorthorn Cow with Calf at Foot

LOT 32 FEARN SILVER MAISIE P1803 (P) GP 82

(673801881) Red & Little White Born:03/04/2020 UK502113-601803
 gs. BROUGHTON PARK DIPLOMAT D103 (P) (AUKSTD103) gs. MEONHILL HIGHLAND CAPTAIN (P) (563801549)
 Sire - FEARN JIMMY (H)(ET) EX 94(623803055) Dam - FEARN FLO MAISIE F1100 (P) VG 89(593802401)
 gd. AUSTINS BONNY 08064 (P) (200208064) gd. FEARN DAISY MAISIE D960 (P) (573800759)

	Calving Ease DIR (%)	Calving Ease DTRS (%)	Gest. Length (days)	Birth Wt. (kg)	200 Day Wt. (kg)	400 Day Wt. (kg)	600 Day Wt. (kg)	Milk (kg)	Scrotal Score (cm)	Carcase Wt. (kg)	Eye Muscle Area (sq.cm)	Fat (mm)	Retail Beef Yield (%)	IMF (%)	Terminal Sire Index	Self Replacing Index	Maternal Index
EBV	-0.7	-1.8	-0.9	1.1	21	28	33	7	-0.3	28	3.4	1.5	0.3	0.1	24	29	28
Acc	42%	39%	43%	74%	67%	69%	66%	47%	45%	58%	43%	62%	58%	54%			
Avg 20	-0.8	-0.5	-0.2	1.7	19	31	40	6	0.2	29	1.8	-0.1	0.6	-0.1	28	28	23

FEARN SILVER MAISIE S2066 (P)

(693803840) Roan Born:01/07/2022 UK502113-302066
 gs. SUTHERLAND BUNDABERG ET (P) (X-3959923) gs. FEARN JIMMY (H)(ET) EX 94 (623803055)
 Sire - DUNSYRE NIMROD (P) (663800743) Dam - FEARN SILVER MAISIE P1803 (P) GP 82(673801881)
 gd. DUNSYRE GIGHA 18TH (P) EX 90(583800822) gd. FEARN FLO MAISIE F1100 (P) VG 89 (593802401)

	Calving Ease DIR (%)	Calving Ease DTRS (%)	Gest. Length (days)	Birth Wt. (kg)	200 Day Wt. (kg)	400 Day Wt. (kg)	600 Day Wt. (kg)	Milk (kg)	Scrotal Score (cm)	Carcase Wt. (kg)	Eye Muscle Area (sq.cm)	Fat (mm)	Retail Beef Yield (%)	IMF (%)	Terminal Sire Index	Self Replacing Index	Maternal Index
EBV	0.5	-2.2	-2.2	1.2	22	30	38	8	0.2	29	3.1	0.4	0.9	-0.2	30	34	27
Acc	38%	34%	39%	55%	52%	52%	50%	37%	32%	44%	33%	46%	43%	40%			
Avg 20	-0.8	-0.5	-0.2	1.7	19	31	40	6	0.2	29	1.8	-0.1	0.6	-0.1	28	28	23

Notes: Ran with Dunsyre Nimrod. Scanned in Calf on 30/11/2022. - Due 17/05/2023.



LOT 32 - FEARN SILVER MAISIE P1803 (P) & FEARN SILVER MAISIE S2066 (P)



THE MILL

at

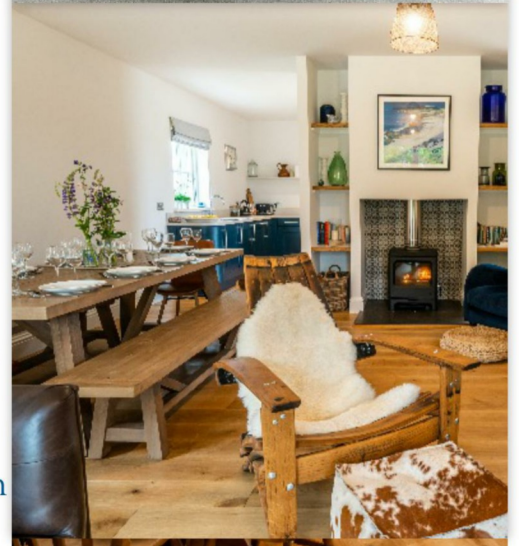
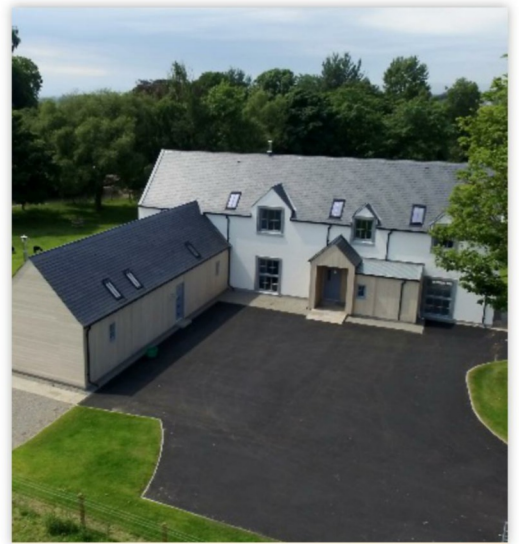
FEARN • FARM

The Mill at Fearn Farm is a flexible, new purpose built holiday house with two properties. The Wee End sleeps 4 and The Mill End sleeps 10, with an internal door you can join the properties up as one big spacious house.

Fully equipped kitchens • Wood burning stoves • Super king zip lock beds • Luxurious linen and towels • WiFi •
BBQ outdoor eating & relaxing areas

For availability and to book go to
www.fearnfarm.com/holidays

Enquiries: fiona@fearnfarm.com
01862 832522 • 07801675970
Fearn Farm, Tain, Ross-shire
IV20 1TL



The Mill at Fearn
Farm

[themillatfearnfarm](https://www.instagram.com/themillatfearnfarm)

LEADING THE FIELD WITH GREAT GRASS!

DLF Seeds are delighted to supply the Scott family at Fearn Farm with many of their forage requirements.

Rape, Kale, Stubble Turnips, Swedes, Brassica mixes as well as grass and clover mixtures.

If you are interested in hearing more about DLF Seeds, speak to your local merchant or contact Paddy Jack and Michael Mulgrew at DLF Edinburgh.

Paddy: 01506 674815 | 07764 568464
pjack@dlf.co.uk

Michael: 01506 674806 | 07890 313137
mmulgrew@dlf.co.uk



DLF

Shearwell Data

Livestock Systems

Combi 3000®

Medium - Primary and secondary



Perfect if you want a smaller primary tag

£1.12

All prices exclude VAT & delivery charges

Full Range online



MET Tag



FIND OUT MORE



MET Tag

SHARP PIN

£2.20

BUILT-IN EID MICROCHIP

Northern Scotland and the Isles - Call Jane 07788 209438

CONTACT THE TEAM 01643 841611     www.shearwell.co.uk

Semen

LOT NUMBER	BULL NAME	QUANTITY
33	Fearn Godfather	5
34	Fearn Godfather	5
35	Fearn Godfather	5
36	Fearn Godfather	5
37	Fearn Godfather	5
38	Fearn Elmer	5
39	Fearn Elmer	5
40	Fearn Elmer	5
41	Fearn Elmer	5
42	Fearn Elmer	5
43	Fearn Kiltarlity	5
44	Fearn Kiltarlity	5
45	Fearn Kiltarlity	5
46	Firefox of Upsall	5
47	Firefox of Upsall	5
48	Firefox of Upsall	5
49	Firefox Of Upsall	5
50	Firefox of Upsall	5
51	Dunsyre Nimrod	5
52	Dunsyre Nimrod	5
53	Dunsyre Nimrod	5
54	Dunsyre Nimrod	5
55	Dunsyre Nimrod	5
56	Dunsyre Nightrider	5
57	Dunsyre Nightrider	5
58	Dunsyre Nightrider	5
59	Dunsyre Nightrider	5
60	Dunsyre Nightrider	5
61	Podohole Fenman	5
62	Podohole Fenman	5

Our Semen is stored at UK Sire Services. There are no royalty fees with any of the bulls available for sale.

Costs - UK Sire Services have additional packing charges per bull, plus a delivery charge depending on location. If a customer of Genus, the packing charge per bulls also applies, plus delivery the genus hub per bull. Following the conclusion of the sale, we will be in touch via email for the arrangements of delivery. Any questions on our semen available for sale please get in touch.



CASTLE
MIXTURES



www.watsonseeds.com



Your local Watson Seeds contact:

Euan Campbell

07393 699522

ecampbell@watsonseeds.com

NFU MUTUAL DINGWALL & THURSO ARE PROUD TO SPONSOR THE NORTHERN LIGHTS BEEF SHORTHORN PRODUCTION SALE 2023

As the UK's leading rural insurer, we're here to put your mind at ease. Whatever cover you choose from us, you can be sure of a high level of protection.

Contact us:

Dingwall 01349 862430 | Thurso 01847 895005



NFU Mutual
FARM INSURANCE

Semen & Reference Sires

FEARN GODFATHER (H)

(603802937)

Dark Roan

Born:27/03/2013

UK502113-101147

Myostatin: E226X-1 , F94L-0 , NT419-0 , NT821-0

gs. BROUGHTON PARK THUNDER C023 (P) (KSTC023)

gs. FEARN BUNDALEER 762 (P) (553800547)

Sire - DAKOTA OF UPSALL (P) (573800829)

Dam - FEARN PASSION DIANA D965 (P) GP 83(573800760)

gd. JILTX435 OF UPSALL (P) (533800378)

gd. FEARN PASSION X (P) (513803772)

	Calving Ease DIR (%)	Calving Ease DTRS (%)	Gest. Length (days)	Birth Wt. (kg)	200 Day Wt. (kg)	400 Day Wt. (kg)	600 Day Wt. (kg)	Milk (kg)	Scrotal Score (cm)	Carcase Wt. (kg)	Eye Muscle Area (sq.cm)	Fat (mm)	Retail Beef Yield (%)	IMF (%)	Terminal Sire Index	Self Replacing Index	Maternal Index
EBV	0.9	3.4	-0.5	2	32	55	61	14	1.5	58	7.9	0.6	2.8	0.2	56	71	38
Acc	84%	79%	83%	95%	92%	91%	89%	77%	86%	82%	68%	80%	77%	74%			
Avg 20	-0.8	-0.5	-0.2	1.7	19	31	40	6	0.2	29	1.8	-0.1	0.6	-0.1	28	28	23

Comments: By the Dakota of Upsall, Godfather was used briefly before we sold him as a 2 year old for 10,000gns in Stirling. When Coldrochie decided to sell we went to view him pre-sale and thought that buying him back was worth considering. He consistently produces cattle which thrive in both the commercial and shoe environment, this trait isn't easy to find.



FEARN KILTARLITY (P)

(633804028)

Red & White

Born:07/04/2016

UK502113-601460

Myostatin: E226X-0 , F94L-0 , NT419-0 , NT821-0

gs. DAKOTA OF UPSALL (P) (573800829)

gs. BROOME POWERPACK F90 AUS (P) (AUL2F90)

Sire - FEARN HERO (P) (613803010)

Dam - FEARN HIRI ISOBEL (P)(ET) EX 92(613802847)

gd. FEARN CONNIES PASSION C826 (H) EX 91(563800729)

gd. AUSTINS ISOBEL 01 98 AUS (P) (200201098)

	Calving Ease DIR (%)	Calving Ease DTRS (%)	Gest. Length (days)	Birth Wt. (kg)	200 Day Wt. (kg)	400 Day Wt. (kg)	600 Day Wt. (kg)	Milk (kg)	Scrotal Score (cm)	Carcase Wt. (kg)	Eye Muscle Area (sq.cm)	Fat (mm)	Retail Beef Yield (%)	IMF (%)	Terminal Sire Index	Self Replacing Index	Maternal Index
EBV	5.4	0.1	-1	0.7	27	45	49	9	0.1	48	5	1.4	1.3	0.1	44	56	34
Acc	50%	42%	47%	79%	72%	69%	67%	44%	69%	56%	45%	55%	52%	44%			
Avg 20	-0.8	-0.5	-0.2	1.7	19	31	40	6	0.2	29	1.8	-0.1	0.6	-0.1	28	28	23

Comments: We bought a share back in Kiltarlity as we felt his genetics were too good not to use again. Sold for good money as a yearling this bull is extremely easily fleshed and offers slightly different genetics, with Dakota as his sire and the NZ Isobel family on his dams side.



FEARN ELMER (P)

(593801769)

Red & Little White

Born:12/05/2011

UK502113-201057

Myostatin: E226X-0 , F94L-0 , NT419-0 , NT821-0

gs. BUNDALEER YANKEE CRUISER Y2 (GEAY2)

gs. BELMORE FUEL INJECTED V12 (P)
(IAWV12)

Sire - FEARN BUNDALEER 762 (P) (553800547)

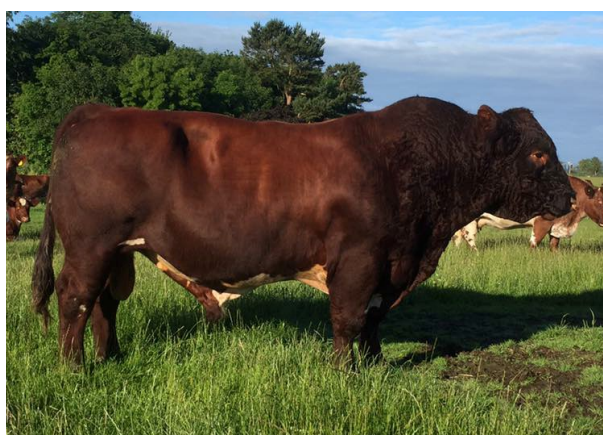
Dam - FEARN NESTA A (P) (543800642)

gd. FEARN WISTERIA (P) (503802163)

gd. FEARN NESTA Y (H) (523800674)

	Calving Ease DIR (%)	Calving Ease DTRS (%)	Gest. Length (days)	Birth Wt. (kg)	200 Day Wt. (kg)	400 Day Wt. (kg)	600 Day Wt. (kg)	Milk (kg)	Scrotal Score (cm)	Carcass Wt. (kg)	Eye Muscle Area (sq.cm)	Fat (mm)	Retail Beef Yield (%)	IMF (%)	Terminal Sire Index	Self Replacing Index	Maternal Index
EBV	-5.5	5.1	0.2	3.6	31	39	47	14	-0.3	30	0.1	-0.2	0.3	-0.4	27	25	24
Acc	80%	78%	77%	95%	93%	93%	91%	84%	88%	84%	72%	83%	82%	78%			
Avg 20	-0.8	-0.5	-0.2	1.7	19	31	40	6	0.2	29	1.8	-0.1	0.6	-0.1	28	28	23

Comments: Elmer was an outstanding Fearn Bundaleer son who has left us several excellent females many of whom have sons in this years sale. We continue to use him via AI and will likely flush cows to him in 2023, its very hard to get cattle that flesh like he did, his steers averaged 360kgs DW at 18months of age from grass alone.



FEARN JIMMY (H) (ET) EX 94

(623803055)

Red & White

Born:12/04/2015

UK502113-501361

Myostatin: E226X-0 , E291X-0 , F94L-0 , NT419-0 , NT821-0

gs. BROUGHTON PARK SENATOR Z051 (P) (AUKSTZ051)

gs. INGLETON WELL DONE W013 (P)
(INGW013)

Sire - BROUGHTON PARK DIPLOMAT D103 (P) (AUKSTD103)

Dam - AUSTINS BONNY 08064 (P) (200208064)

gd. BROUGHTON PARK MARCHIONESS Y014 AUS (P)
(AUSGTY014)

gd. AUSTINS BONNY U13 U13

	Calving Ease DIR (%)	Calving Ease DTRS (%)	Gest. Length (days)	Birth Wt. (kg)	200 Day Wt. (kg)	400 Day Wt. (kg)	600 Day Wt. (kg)	Milk (kg)	Scrotal Score (cm)	Carcass Wt. (kg)	Eye Muscle Area (sq.cm)	Fat (mm)	Retail Beef Yield (%)	IMF (%)	Terminal Sire Index	Self Replacing Index	Maternal Index
EBV	-5.3	-1.9	-0.6	3.5	34	46	62	5	0.1	42	4.7	0.1	1.7	-0.2	44	47	29
Acc	64%	58%	54%	89%	84%	85%	81%	60%	69%	71%	53%	71%	68%	63%			
Avg 20	-0.8	-0.5	-0.2	1.7	19	31	40	6	0.2	29	1.8	-0.1	0.6	-0.1	28	28	23

Comments: Jimmy is an embryo from the highest priced cow at the Austin's sale in New Zealand combining Bonny 08064 and Broughton Park Diplomat from Australia. He's a big stretchy bull and is leaving fantastic females.



FEARN MONARCH (P)

(643852457)

Roan

Born:03/04/2018

UK502113-401612

Myostatin: E226X-0 , E291X-0 , F94L-0 , NT419-0 , NT821-0

gs. YAMBURGAN LOCKYER 50TH AUS (P) (YYB104)

gs. FEARN HERO (P) (613803010)

Sire - CUAN LOCKYER 266 (P) (UK9332841-0026-6) (ET) 623801684

Dam: FEARN BONNY K1474 (P) VG 86 633802443

gd. AUSTINS BONNY 0529 ET AUS (200205029)

gd. FEARN HAURORA BONNY (P) (ET)
(613802841)

	Calving Ease DIR (%)	Calving Ease DTRS (%)	Gest. Length (days)	Birth Wt. (kg)	200 Day Wt. (kg)	400 Day Wt. (kg)	600 Day Wt. (kg)	Milk (kg)	Scrotal Score (cm)	Carcase Wt. (kg)	Eye Muscle Area (sq.cm)	Fat (mm)	Retail Beef Yield (%)	IMF (%)	Terminal Sire Index	Self Replacing Index	Maternal Index
EBV	-1.5	-0.5	-1.4	1.9	35	55	62	9	2.2	49	3.5	0.3	1.1	0	46	52	33
Acc	53%	41%	49%	82%	79%	79%	76%	35%	76%	67%	52%	65%	62%	55%			
Avg 20	-0.8	-0.5	-0.2	1.7	19	31	40	6	0.2	29	1.8	-0.1	0.6	-0.1	28	28	23

Comments: Fearn Monarch is 100% antipodean, we used him briefly before selling him for commercial work possibly to soon by the way his calves have turned out. He's an easy fleshing roan bull who sired some of the best lots we offered for sale last year and there's a cracking bull available this year.



DAKOTA OF UPSALL (P)

(573800829)

Red & Little White

Born:19/05/2010

UK121060-500715

Myostatin: E226X-0 , F94L-0 , NT419-0 , NT821-0

gs. WEEBOLLABOLLA THEODORE T85 (P) (IMP 844H) X-(CAN) (M471844)

gs. WATCHMAN OF UPSALL (P) (503801937)

Sire - BROUGHTON PARK THUNDER C023 (P) (KSTC023)

Dam - JILT X435 OF UPSALL (P) (533800378)

gd. BROUGHTON PARK ROSE A011 (P) (KSTA011)

gd. JILT X305 OF UPSALL (P) (513803148)

	Calving Ease DIR (%)	Calving Ease DTRS (%)	Gest. Length (days)	Birth Wt. (kg)	200 Day Wt. (kg)	400 Day Wt. (kg)	600 Day Wt. (kg)	Milk (kg)	Scrotal Score (cm)	Carcase Wt. (kg)	Eye Muscle Area (sq.cm)	Fat (mm)	Retail Beef Yield (%)	IMF (%)	Terminal Sire Index	Self Replacing Index	Maternal Index
EBV	6	0.3	-0.2	2.5	40	66	75	14	0.8	64	5.1	0.6	1.3	0.6	62	67	33
Acc	84%	82%	86%	95%	93%	92%	91%	88%	88%	85%	73%	83%	81%	79%			
Avg 20	-0.8	-0.5	-0.2	1.7	19	31	40	6	0.2	29	1.8	-0.1	0.6	-0.1	28	28	23

Comments: Dakota needs little introduction and awesome bull, long as a train and just loved the show ring with Jimmy on the halter. He was a long clean bull who left some great daughters in our herd which have stood the test of time. His sons have also done well with Godfather being the most notable, we don't have much semen left so best take the opportunity to buy a son. There are six of them available this year, all slightly different but one does stand out.



FIREFOX OF UPSALL (P) EX 93

(593801329)

AI White

Born:06/04/2012

UK121060-400847

Myostatin: E226X-0 , F94L-0 , NT419-0 , NT821-0

gs. ALICE DOWNS KNIGHTLY 28TH (P) (671525)

gs. BROUGHTON PARK THUNDER C023 (P)
(KSTC023)

Sire - MANDALONG SUPER ELEPHANT (P) (354455)

Dam - CLIPPER X699 OF UPSALL (P) GP 83(573800142)

gd. MANDALONG MADGE 2ND (P) (632477)

gd. CLIPPER X431OF UPSALL (P)(P) VG
86(533800375)

	Calving Ease DIR (%)	Calving Ease DTRS (%)	Gest. Length (days)	Birth Wt. (kg)	200 Day Wt. (kg)	400 Day Wt. (kg)	600 Day Wt. (kg)	Milk (kg)	Scrotal Score (cm)	Carcase Wt. (kg)	Eye Muscle Area (sq.cm)	Fat (mm)	Retail Beef Yeild (%)	IMF (%)	Terminal Sire Indrex	Self Replacing Index	Maternal Index
EBV	16.9	9.5	-0.5	-1.5	6	-3	2	4	0.5	2	-0.5	0.3	-0.4	0	9	21	26
Acc	78%	69%	76%	95%	93%	91%	89%	79%	81%	81%	67%	80%	78%	73%			
Avg 20	-0.8	-0.5	-0.2	1.7	19	31	40	6	0.2	29	1.8	-0.1	0.6	-0.1	28	28	23

ought in 2020 as cover for our existing bull team which was on the young side that season. This Mandalong Super Elephant son is now ten years old and is like fine wine getting better with age. We will have more sons available from him next year as he got a larger bulling group in 2021.



DUNSYRE NIGHTRIDER (P)

(663801295)

Red

Born:01/02/2019

UK560901-101557

Myostatin: E226X-0 , F94L-1 , NT419-0 , NT821-0

gs. BROUGHTON PARK THUNDER C023 (P) (KSTC023)

gs. DUNSYRE ASTERIX (P) (543801402)

Sire - GLENISLA GUARDSMAN II (P) (603800699)

Dam - DUNSYRE MAGIC 10TH (P) G 77(573801958)

gd. GLENISLA DESIREE B566 (P) EX 90(553800382)

gd. LOCH AWE MAGIC 10TH (H) (503802766)

	Calving Ease DIR (%)	Calving Ease DTRS (%)	Gest. Length (days)	Birth Wt. (kg)	200 Day Wt. (kg)	400 Day Wt. (kg)	600 Day Wt. (kg)	Milk (kg)	Scrotal Score (cm)	Carcase Wt. (kg)	Eye Muscle Area (sq.cm)	Fat (mm)	Retail Beef Yeild (%)	IMF (%)	Terminal Sire Indrex	Self Replacing Index	Maternal Index
EBV	3.8	4	-1.1	2	25	40	48	14	0.3	40	4.5	0.2	1.8	-0.3	43	50	28
Acc	53%	44%	54%	82%	76%	72%	70%	53%	61%	60%	45%	57%	55%	50%			
Avg 20	-0.8	-0.5	-0.2	1.7	19	31	40	6	0.2	29	1.8	-0.1	0.6	-0.1	28	28	23

Comments: Dunsyre Nightrider was bought as a yearling with exceptional figures, he's a big long red bull with growth rates and shape which is certainly passed onto is calves.

**Photo of Nightrider aged 15 month*



DUNSYPRE NIMROD (P)

(663800743)

AI Roan

Born:31/03/2019

UK560901-401574

Myostatin: E226X-0 , F94L-0 , NT419-0 , NT821-0

gs. SUTHERLAND TITLEIST 269 ET (P) (X-3902216)

gs. DUNSYPRE ASTERIX (P) (543801402)

Sire - SUTHERLAND BUNDABERG ET (P) (X-3959923)

Dam - DUNSYPRE GIGHA 18TH (P) EX 90(583800822)

gd. MARELLAN IRISH ISOBEL 38TH (P) (X-3947586)

gd. DUNSYPRE GIGHA 15TH (H) (543801413)

	Calving Ease DIR (%)	Calving Ease DTRS (%)	Gest. Length (days)	Birth Wt. (kg)	200 Day Wt. (kg)	400 Day Wt. (kg)	600 Day Wt. (kg)	Milk (kg)	Scrotal Score (cm)	Carcase Wt. (kg)	Eye Muscle Area (sq.cm)	Fat (mm)	Retail Beef Yield (%)	IMF (%)	Terminal Sire Index	Self Replacing Index	Maternal Index
EBV	1.8	-2.6	-3.7	1.3	23	32	50	9	0.7	33	2.7	-0.8	1.7	-0.5	39	45	24
Acc	64%	55%	66%	83%	81%	77%	75%	59%	47%	67%	52%	67%	64%	59%			
Avg 20	-0.8	-0.5	-0.2	1.7	19	31	40	6	0.2	29	1.8	-0.1	0.6	-0.1	28	28	23

Comments: Dunsyre Nimrod was bought from Carey Coombs in 2020 as a junior herd sire, he's a smart roan son of Sutherland Bundaberg with good calving figures which should knit well with Godfather genetics.

**Photo of Nimrod aged 15 months*



JACOBITE STAR OF LONGFIELD (P)

(623800012)

AI White

Born:20/01/2015

UK290392-600034

Myostatin: C313Y-0 , D182N-0 , E226X-0 , E291X-0 , F94L-0 , NT419-0 , NT821-0 , Q204X-0 , S105C-0

gs. GLENISLA JACOBITE (P) (GJP J38.41) (87.50)

gs. GLENISLA BANQO (P) (553800462)

Sire - DUNSYPRE NORTH STAR (P) (LA0565-00444-45)

Dam - CHAPELTON NETTLE 4136 (P) EX 91 (EX2) (593802672)

LOCH AWE DAISY 3RD (H) (CDC J48.41) (76.56)

gd. CHAPELTON NETTLE 1905 (P) VG 87 (523801285)

	Calving Ease DIR (%)	Calving Ease DTRS (%)	Gest. Length (days)	Birth Wt. (kg)	200 Day Wt. (kg)	400 Day Wt. (kg)	600 Day Wt. (kg)	Milk (kg)	Scrotal Score (cm)	Carcase Wt. (kg)	Eye Muscle Area (sq.cm)	Fat (mm)	Retail Beef Yield (%)	IMF (%)	Terminal Sire Index	Self Replacing Index	Maternal Index
EBV	4.7	-0.7	-0.6	1	31	46	56	6	-0.4	50	2.1	-0.6	1	0	44	50	27
Acc	75%	65%	76%	95%	93%	92%	88%	67%	81%	79%	65%	77%	75%	72%			
Avg 20	-0.8	-0.5	-0.2	1.7	19	31	40	6	0.2	29	1.8	-0.1	0.6	-0.1	28	28	23

Comments: A big powerful white bull, sired by the same bull as Fearn Wyvis, Dunsyre North Star. We will likely keep a son of his to use in the herd, he's clicked really well with our cows leaving several cracking sons and daughters.



REDHILL PRIDDY (P)

(673803364)

Dark Roan

Born:21/03/2020

UK324648-500155

Myostatin: E226X-0 , F94L-0 , NT419-0 , NT821-0

gs. MARELLAN VAGABOND (P) (94/04002)

gs. CHAPELTON PROMOTER (H) (K0200-02633-46)

Sire - BELMORE FUEL INJECTED V12 (P) (IAWV12)

Dam - REDHILL PROMOTERS LOVELY 053 (P) EX 93 (EX2) (573801318)

gd. BELMORE FIRST LADY S52 (P) (97/01995)

gd. REDHILL BUNDABERG LOVELY 3RD (P) (TW) (523800338)

	Calving Ease DIR (%)	Calving Ease DTRS (%)	Gest. Length (days)	Birth Wt. (kg)	200 Day Wt. (kg)	400 Day Wt. (kg)	600 Day Wt. (kg)	Milk (kg)	Scrotal Score (cm)	Carcase Wt. (kg)	Eye Muscle Area (sq.cm)	Fat (mm)	Retail Beef Yield (%)	IMF (%)	Terminal Sire Index	Self Replacing Index	Maternal Index
EBV	-0.6	-2.9	-1.1	1.3	18	25	34	6	0.5	19	0.5	0.3	-0.4	0.1	20	16	22
Acc	64%	57%	59%	74%	71%	65%	64%	54%	50%	56%	44%	51%	49%	46%			
Avg 20	-0.8	-0.5	-0.2	1.7	19	31	40	6	0.2	29	1.8	-0.1	0.6	-0.1	28	28	23

Comments: Bought to cover heifers and successfully used for two seasons before damaging himself in action, he was an easy fleshed Belmore Fuel Injected V12 son a bull that has bred very well in the past, hence our desire to bring some genetics into the herd.



PODEHOLE FENMAN (P)

(593800904)

Roan

Born:06/03/2012

UK229787-100017

Myostatin: E226X-0 , F94L-0 , NT419-0 , NT821-0

gs. CAVANS YANKEE Y838 (H) (523800652)

gs. PODEHOLE YETI (H) (523800189)

Sire - CHAPELTON CLANSMAN (P) (563801260)

Dam - PODEHOLE PHANTASY AURORA (H) GP 83(543801429)

gd. CHAPELTON DUCHESS (P) (523800259)

gd. PODEHOLE PHANTASY YVE (H) VG 88(523800185)

	Calving Ease DIR (%)	Calving Ease DTRS (%)	Gest. Length (days)	Birth Wt. (kg)	200 Day Wt. (kg)	400 Day Wt. (kg)	600 Day Wt. (kg)	Milk (kg)	Scrotal Score (cm)	Carcase Wt. (kg)	Eye Muscle Area (sq.cm)	Fat (mm)	Retail Beef Yield (%)	IMF (%)	Terminal Sire Index	Self Replacing Index	Maternal Index
EBV	-4	-2	1.8	3.1	18	28	28	7	1.2	18	0.8	-0.3	0.2	-0.5	16	17	27
Acc	73%	72%	72%	90%	87%	86%	86%	84%	81%	78%	65%	77%	74%	70%			
Avg 20	-0.8	-0.5	-0.2	1.7	19	31	40	6	0.2	29	1.8	-0.1	0.6	-0.1	28	28	23

Comments: Another easy fleshing gentle bull who was quite a character and who left us cows with character, again we could have possibly kept him a little longer but the financial controller sold him when I was away on a rugby tour!



Sutherland Luining Bulls For Sale



SUTHERLAND ARDULLIE



SUTHERLAND ARISAIG



SUTHERLAND ARDBEG



SUTHERLAND ARDMORE

A fantastic selection of
Luining Bulls available by
private sale

Sired by Luining Rustler &
Sutherland Tornado

Registered with the Luining Society
Performance recorded with Signet
Out-wintered on grass and forage

Health Status:

BVD Accredited

Johnes Risk Level 1

Please call John on 07770 863506
or email john@fearnfarm.com

www.fearnfarm.com



THANK YOU FOR YOUR SUPPORT

John, Fiona & the rest of the Fearn Team

Fearn Farm, Fearn

Ross-Shire, IV20 1TL

For more information about the family enterprise and our self catering accommodation, 'The Mill at Fearn Farm' visit:

www.fearnfarm.com

 **Fearn Farm**

 **@FearnFarm**

 **fearn_farm**