



# WORKING GENES

**6TH BULL SALE 2023**

## INCHEOCH

**THURS 5TH SEPTEMBER 4.30 PM**  
**ON-FARM SALE — ON-LINE BIDDING**



**14 SIMMENTAL - 2 ANGUS - 4 LUING**



Viewing Days:  
Sunday 27th August 3pm  
Thursday 31st August 3pm  
Or call to arrange a viewing.  
Videos at [www.incheochfarm.co.uk](http://www.incheochfarm.co.uk)



**MATERNAL GENETICS**  
**PADDOCK REARED**  
**FOR FERTILITY AND LONGEVITY**

*Functional Efficient Robust*

## Why a **WORKING GENES** Bull Sale?

We understand that fertility in a functional, robust cow is the key to an efficient suckler herd. Our breeding program is designed to promote those traits—200 pedigree, recorded cows managed in commercial conditions, with a 2yo calving and strict culling policy.

These bulls have been developed on a low intensive diet to encourage fertility and longevity. Our entire year group of Simmental, Angus and Luing bulls are offered—reared the way we would want them.

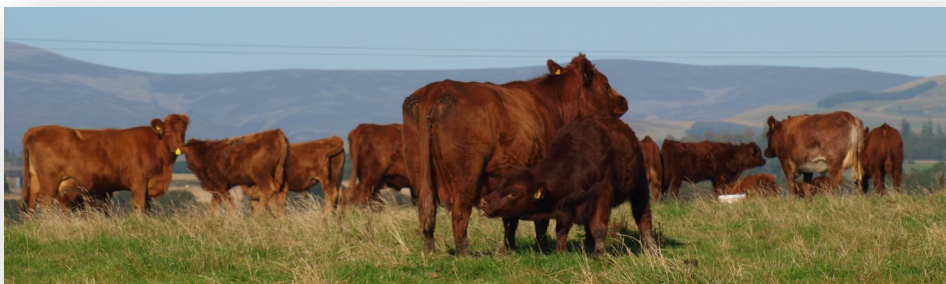
*'Functional, fertile cattle, structurally sound for longevity, and with good temperament will never go out of style'*



The Incheoch **SIMMENTAL** herd of 40 - mostly polled - cows is based on the most functional cow families from the previous 'Dirnanean' herd. Calving ease, structural soundness for longevity and a calm, maternal character have always been a priority—we've turned up the pressure on lower mature weight, ease of fleshing and fertility in order to find you sires that will leave lower maintenance, regular calving, long lasting daughters ...and a steer with do-ability and a good top.

Inchisla **ANGUS** are bred to provide a short-gestation, calving-ease sire and leave easy-finished grass-type cattle. Clare has produced us bulls particularly suited to go to yearling heifers, which have left calves with performance hard to fault.

The Dirnanean **LUING** cows have been the backbone of our business for over 45 years. Fertile, hardy, easy to manage, fleshing ability from 2nd quality forage, and a temperament that makes working with cattle a pleasure. Our pure Luing steers can put a lot of weight on at grass and finish before their second winter—if you are visiting, make sure to have a look at them. More cattlemen are turning to the Luing bull for an injection of no-nonsense cow-traits into their herd.



## Welcome to the 6th **WORKING GENES** Bull Sale

Bulls (15-19 months)  
14 Simmental, 2 Angus, 4 Luings

On-line, silent auction by Yourbid — ends 4.30pm 5th September.

Come to the Sale to see bulls in their paddocks and bid without the pressure of the auction-ring.

Videos coming, and viewing days:  
Sunday 27th August 3-8pm    Thursday 31st August 3-8pm



“Robust bulls, bred from Functional, Efficient cows has been our goal for many years now. We run just over 200 pedigree, performance recorded cows, and select hard for fertility, structural soundness, good temperaments and easy calving. We find that easy-fleshed, medium framed cattle with a bit of maternal character tend to be the ones who tick the boxes—and we think the bulls we have on offer today can transfer these traits to your herd.

These bulls were not creep fed, had paddock exercise through the winter and have been summered at grass. Our non-intensive system of developing bulls lets you pick out the ones that can put on flesh from forage.

This group of bulls have been halter broken but not led, and their feet are shown untrimmed. ”

*The McGowan family*



## Terms & Conditions

- Bidding in £ pounds.
- The sale is being held with the help of Pentland Auctions, but purchases will be invoiced by Messrs Finlay McGowan.
- Bulls will be sold with the usual 6 month breeding warranty given from the date they leave Incheoch.

## Collection

- We don't expect bulls to be uplifted on sale day—they will be rung before collection and we will do what we can to help delivery where possible.
- Bulls have not been semen tested prior to sale because they are running in large batches and we are trying to manage hormone levels!! They are sold subject to passing a test here before they leave.
- All stock can be left at Incheoch, at our risk, until the end of September. Bulls can be kept longer by separate agreement under a wintering option at £25/week.

## Herd Health

The health and fertility of the Incheoch herd has always been a priority, being the bedrock of profitable cattle production. As well as controlling the 'Health scheme' diseases, the herd has enjoyed general good health and excellent fertility. Respiratory disease and scours, along with most of the common cattle ailments are rare at Incheoch and antibiotic use is minimal.

**Johne's Disease:** The herd is a member of the Premium Cattle Health Scheme run by SAC and has been pro-actively engaged in controlling Johnes Disease, over and above the requirements of the scheme, for 25 years. There have been no clinical cases within the herd for many years but one blood positive last year which was culled before dung test, maintains the herd as a risk level 3. In the last 8 years a total of 1761 individual blood tests have been carried out with only 6 positives. None of the animals presented for sale have a history of Johnes in their families.

**BVD:** The herd has been fully accredited for 17 years and is additionally vaccinated. All animals presented for sale are individually vaccinated and accredited.

**Leptospirosis:** There is no history of this disease in the herd and it is now policy not to vaccinate the herd.

**IBR:** The breeding herd is vaccinated, believed IBR free though not accredited. Bulls are not vaccinated.

If you have any questions regarding the health status please feel free to speak to Neil or call me at Thrums Vet Group on 01575 572643.

*Graeme Richardson*

Catalogue Details: We have tried to supply as much relevant information in the catalogue as we can, and present it as clearly as possible.

EBVs are shown in the format shown below. Please be aware that the EBVs for different breeds cannot be directly compared. For convenience, a colour code system highlights where the ebv falls within the wider breed genetic pool:

Top 10%  
 Top 25%  
 Average+  
 Lower 50% (Mwt only)

Index of relevant traits for:  
 TI = Bull to be used in terminal herd  
 SRI = for use in Self Replacing herd with proportion of daughters kept.

Calving Ease traits:  
 Dir = Direct Calving Ease of calves sired by the bull  
 Dtrs = Daughter's Calving Ease (how easily his daughters give birth).  
 Postive Numbers Favourable

Carcase Traits (from Ultrasound Scanning):  
 Cwt = Carcase Weight  
 EMA = Eye Muscle Area  
 Fat = Positve for More Fat.

Gestation Length  
 (negative for shorter gestation).

Birthweight  
 (lower number for smaller birth-weighths).

Maternal Traits:  
 Milk is measure of Maternal influence on calf growth to 200days.  
 SS = Scrotal Circumference.

Gibby's Real Deal

Calv-Ease		Birth		Growth							Carcase			Index	
Dir	Dtrs	GL	Bwt	200	400	600	Mwt	Milk	SS		Cwt	EMA	Fat	TI	SRI
3.8	2.6	-1.0	1.0	42	62	66	69	9	0.4		48	4.4	0.8	75	94
81%	74%	85%	92%	87%	88%	84%	78%	73%	79%		74%	57%	71%	(accuracy)	

Growth Traits:  
 200, 400 & 600 day weights  
 Mwt = Mature Weight (we have highlighted grey the bulls with EBVs in the **lower 25%** of the breed for Mature Weight).  
 Higher numbers, more kgs.

Accuracy represents the reliability of the EBV prediction—it reflects the amount of data that has been gathered on the individual and the members of it's family. Over 70% would give a high 'confidence level' in the EBV (often only achieved with progeny measured), and lower than 30% would be low confidence.



## Lot 1 Incheoch Nanook

UK 542191 204346  
born 09/01/22  
858 kg 43 cm (2nd Aug)

Nanook is a powerful, full-fleshed bull that has been a sale-leader all along. Good on his legs; a canny disposition with a bit of character; and out of a really nicely uddered young cow.




PHS Poll Worldwide P	Rogant (Imp DE)
	Rolling Acres Red Fern
D. Lightning K13 P	Gibby's Real Deal PP
	D. Lightning D6 P

Calv-Ease				Birth				Growth								Carcase				Index	
Dir	Dtrs	GL	Bwt	200	400	600	Mwt	Milk	SS	Cwt	EMA	Fat	TI	SRI							
7.1	3.9	-2.8	-0.2	43	67	66	53	14	2.4	49	4.8	0.8	83	121							
51%	46%	59%	60%	56%	56%	54%	48%	41%	45%	46%	33%	41%	(accuracy)								

## Lot 2 Incheoch Nomad P ET

UK 542191 304347  
born 12/01/22  
836 kg 42 cm (2nd Aug)

Nomad is a full brother to Fontana - stock bull here who left fantastic daughters with perfect udder and feet. We sold him in a moment of weakness and he is still working at 9yo for Shaun MacDonald at Torgorm. Another full brother, Mungo, was Lot 3 last year.



Gibby's Real Deal PP	Gibby's Nicholas 302N
	Gibby's Nabriska 16N
Dirnanean Bali B7	Halenook Vargner
	D. Victoria V15

Dam pictured.

Polled.

Calv-Ease		Birth		Growth						Carcase			Index	
Dir	Dtrs	GL	Bwt	200	400	600	Mwt	Milk	SS	Cwt	EMA	Fat	TI	SRI
3.0	1.9	-0.1	2.5	38	65	73	88	6	0.8	48	3.7	0.6	74	94
54%	52%	57%	74%	69%	69%	65%	55%	51%	67%	57%	46%	56%	(accuracy)	

### Lot 3 Incheoch Nanton P

UK 542191 304438  
born 31/03/22  
764 kg 45 cm (2nd Aug)

Nanton is a smart, polled bull with a fantastic set of figures in an easy-fleshing package.

16 is turning into one of our top cows. She calved at 24months, no assists over 5 calvings at a 366 day interval, and a perfect udder. Topping that, she stood 1st in a YFC stockjudging class of our best red cows this spring.



PHS Poll Worldwide P	Rogant (Imp DE)
	Rolling Acres Red Fern
Incheoch Meise I6	Dirnanean Fontana P
	D. Meise G10 P

Calv-Ease				Birth				Growth								Carcase			Index	
Dir	Dtrs	GL	Bwt	200	400	600	Mwt	Milk	SS	Cwt	EMA	Fat		TI	SRI					
5.5	3.2	-2.0	1.3	44	69	69	60	16	2.2	50	5.3	1.1		87	123					
52%	47%	63%	75%	72%	71%	67%	54%	44%	69%	58%	46%	55%		(accuracy)						

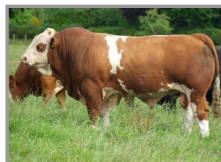
## Lot 4 Incheoch Norvik PP

UK 542191 604385  
born 22/03/22  
778 kg 40 cm (2nd Aug)

Homozygous polled, Norvik is the first son of the sale-leader 2020. Keystone (pictured below), was the most powerful Real Deal son we have seen and we were delighted John Ritchie allowed us to collect a jump of semen.



Apostle daughters are proving to be long-lasting, functional cows.



Incheoch Keystone PP	Gibby's Real Deal PP
	Incheoch Polarine H3 P
Incheoch Girlie I1 P ET	Dirnanean Apostle PP
	Hockenhull Girlie 13th

Calv-Ease				Birth				Growth				Carcase				Index	
Dir	Dtrs	GL	Bwt	200	400	600	Mwt	Milk	SS	Cwt	EMA	Fat	TI	SRI			
-1.5	0.1	0.3	1.5	32	61	56	34	10	0.0	46	5.7	0.1	80	78			
49%	43%	61%	74%	70%	69%	65%	54%	42%	69%	55%	45%	53%	(accuracy)				

UK 542191 604378  
born 21/03/22  
798 kg 43 cm (2nd Aug)

A photograph of a brown and white cow standing in a green field. The cow has a white face and legs, with a large brown body. It is looking towards the camera. The background shows a green field with some trees and a distant hill.

A large brown and white cow, likely a Friesian or similar breed, stands in a lush green field. The cow has a white face and legs, with a large brown body. It is looking towards the camera. In the background, there are rolling green hills and a line of trees under a clear sky.

Kyleston Iceman P	Keeldrum Eclipse P
	Kyleston Ruffles F10
Incheoch Calypso K7 P	Auroch Deuter PP
	D. Calypso D18 P

Calv-Ease				Birth				Growth								Carcase				Index	
Dir	Dtrs	GL	Bwt	200	400	600	Mwt	Milk	SS	Cwt	EMA	Fat	TI	SRI							
9.6	3.8	-2.5	-0.2	39	76	76	60	11	0.5	60	6.1	0.1	106	124							
43%	39%	61%	75%	71%	70%	66%	53%	35%	69%	57%	44%	53%	(accuracy)								

UK 542191 504447  
born 05/04/22  
816 kg 43 cm (2nd Aug)

A photograph of a light-colored cow, possibly a Friesian or similar breed, standing in a grassy field. The cow has a white face and neck, with a yellow tag in its left ear. Its body is a mix of light brown and white patches. It is standing on green grass with a dense line of trees and bushes in the background.



Dirnanean Telstar P	Halenook Panache
	D. Polarine P10 P
D. Girlie E15 ET	Arkmill Franklyn
	Hockenhull Girlie 13th

Calv-Ease		Birth		Growth						Carcase			Index	
Dir	Dtrs	GL	Bwt	200	400	600	Mwt	Milk	SS	Cwt	EMA	Fat	TI	SRI
6.2	1.9	-1.1	1.1	35	76	83	95	11	0.2	62	5.5	-0.5	105	121
57%	56%	65%	77%	73%	73%	69%	60%	57%	72%	62%	52%	60%	(accuracy)	



**Lot 7** Incheoch Noah PP

UK 542191 104436  
born 31/03/22  
762 kg 39 cm (2nd Aug)

Homozygous Polled, with top growth figures, Noah is an appealing looking bull out in the field.

Incheoch Iceman was a bull we were very proud of at the 1st sale—and were pleased to winter him for Rob Wainwright on Coll and got a little use before he left. Same dam-line as Lot 6.



Slievenagh Joker P	Kilbride Farm Glenhead P
	Slievenagh Whitney
Incheoch Girlie K15 P	Incheoch Iceman PP
	Dirnanean Girlie E15 ET

Calv-Ease		Birth		Growth						Carcase			Index	
Dir	Dtrs	GL	Bwt	200	400	600	Mwt	Milk	SS	Cwt	EMA	Fat	TI	SRI
2.5	1.2	-0.3	2.3	42	77	84	98	7	0.9	59	2.9	-0.8	92	109
46%	41%	50%	73%	68%	68%	63%	52%	35%	68%	55%	44%	51%	(accuracy)	

### Lot 8 Incheoch Neff PP

UK 542191 404404  
born 25/03/22  
738 kg 41 cm (2nd Aug)

Another Homozygous Polled Joker son, Neff and Noah are a very similar pair. They've been tight to split all the way through—although Neff's lower mature-weight prediction is starting to show.



Slievenagh Joker P	Kilbride Farm Glenhead P
	Slievenagh Whitney
Incheoch Fiona J12 P	Dirnanean Druid P
	Woodhall Electra P ET

Calv-Ease		Birth		Growth						Carcase			Index	
Dir	Dtrs	GL	Bwt	200	400	600	Mwt	Milk	SS	Cwt	EMA	Fat	TI	SRI
2.5	1.1	0.4	0.9	31	76	72	62	8	1.4	53	3.8	-0.2	89	105
44%	40%	51%	75%	69%	69%	65%	52%	37%	69%	56%	45%	54%	(accuracy)	

## Lot 9 Incheoch Nelson PP

UK 542191 604441  
born 02/04/22  
760 kg 40.5 cm (2nd Aug)

Homozygous Polled Nelson shows the thick, beefy stamp of both his sire, Joker and grandsire, Real Deal. He is a big, meaty bull with a bit of style.

Dam calved at 28mths with 4 calvings at 350 day interval, no assists and a nice udder. Same cow line as Lot 10 –G2 is an ET sister to G30.



Slievenagh Joker P	Kilbride Farm Glenhead P
	Slievenagh Whitney
Incheoch Redstar J2 P	Gibby's Real Deal PP
	Incheoch Redstar G2 P

Calv-Ease				Birth				Growth							Carcase			Index	
Dir	Dtrs	GL	Bwt	200	400	600	Mwt	Milk	SS	Cwt	EMA	Fat	TI	SRI					
1.1	0.0	0.4	2.7	40	77	81	82	5	0.4	58	4.4	-0.2	94	103					
45%	40%	54%	75%	69%	69%	64%	52%	38%	69%	56%	45%	54%	(accuracy)						

## Lot 10 Incheoch Nestor PP

UK 542191 304522  
born 15/05/22  
768 kg 40.5 cm (2nd Aug)

It's easy to forget Nestor is the youngest bull here.

The Redstar G30 cow cut right to the top of the herd when she produced Lincoln (l) and then Minstel (r.), with another cracker at foot now.



Slievenagh Joker P	Kilbride Farm Glenhead P
	Slievenagh Whitney
D. Redstar G30 P	Dirnanean Apostle PP
	D. Wandilla W14

Calv-Ease				Birth				Growth							Carcase			Index	
Dir	Dtrs	GL	Bwt	200	400	600	Mwt	Milk	SS	Cwt	EMA	Fat	TI	SRI					
-2.1	-1.1	1.1	4.1	42	81	83	84	10	0.3	57	3.8	-0.4	94	97					
48%	44%	55%	75%	70%	70%	65%	53%	41%	70%	57%	47%	55%	(accuracy)						

## Lot 11 Incheoch Nearco PP

UK 542191 104520  
born 08/05/22  
734 kg 39 cm (2nd Aug)

Homozygous Polled, with top growth figures, Noah is an appealing looking bull out in the field.

Incheoch Iceman was a bull we were very proud of at the 1st sale—and were pleased to winter him for Rob Wainwright on Coll and got a little use before he left. Same dam-line as Lot 6.



Slievenagh Joker P	Kilbride Farm Glenhead P
	Slievenagh Whitney
Incheoch Meise I9 P	Dirnanean Fontana P
	Dirnanean Meise E3 P

Calv-Ease				Birth				Growth								Carcase				Index	
Dir	Dtrs	GL	Bwt	200	400	600	Mwt	Milk	SS	Cwt	EMA	Fat	TI	SRI							
-1.7	0.2	1.2	4.9	43	79	89	113	6	0.7	55	2.5	-0.3	86	100							
48%	43%	53%	75%	69%	69%	65%	53%	39%	69%	57%	46%	55%	(accuracy)								

## Lot 12 Incheoch Natal PP

UK 542191 704519  
born 07/05/22  
746 kg 39 cm (2nd Aug)

Completing the set of Homozygous Polled, lighter coloured bulls with top growth figures, Natal comes in top of the class for 200 & 400 day weight EBVs (with Lots 10 and 11 close behind)!

If tipping the scales early pays your bills, and de-horning calves isn't your thing—these lads are worth a look.



Slievenagh Joker P	Kilbride Farm Glenhead P
	Slievenagh Whitney
Incheoch Bali K9 P	Dirnanean Druid P
	Incheoch Bali H7

Calv-Ease				Birth				Growth								Carcase				Index	
Dir	Dtrs	GL	Bwt	200	400	600	Mwt	Milk	SS	Cwt	EMA	Fat	TI	SRI							
-5.2	-1.3	0.7	4.7	45	85	86	82	8	0.3	57	3.5	-0.3	93	93							
46%	40%	49%	73%	68%	68%	64%	52%	33%	68%	55%	44%	51%	(accuracy)								

## Lot 13 Incheoch Nobel P

UK 542191 304515  
born 06/05/22  
702 kg 40 cm (2nd Aug)

Nobel is another youngster who we have every confidence will mature into a steady, reliable herd bull. His mother has a knack of breeding those sorts.

First calved at 26mths, D11 has an astonishing interval of 358 days over 10 calvings with only 2 slight assists. A son (pictured) went to Quixwood.



Slievenagh Joker P	Kilbride Farm Glenhead P
	Slievenagh Whitney
Incheoch Grizel D11 P	Dirnanean Apostle PP
	Dirnanean Lucille

Calv-Ease				Birth				Growth							Carcase			Index	
Dir	Dtrs	GL	Bwt	200	400	600	Mwt	Milk	SS	Cwt	EMA	Fat	TI	SRI					
0.8	-1.6	1.2	2.3	37	67	71	81	9	0.0	49	2.9	0.0	73	78					
51%	49%	55%	76%	70%	70%	66%	54%	45%	70%	58%	58%	54%	(accuracy)						

## Lot 14 Incheoch Nixon

UK 542191 504510  
born 01/05/22  
724 kg 39.5 cm (2nd Aug)

Nixon is a thick, wide-made bull with plenty power – out of a big cow.

Nice balance of figures - being pretty good or better for everything - backs up his appearance as a reliable all-rounder.



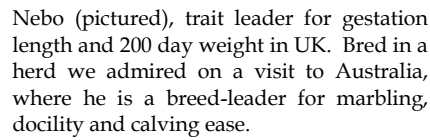
Slievenagh Joker P	Kilbride Farm Glenhead P
	Slievenagh Whitney
Incheoch Calypso H2	Dirnanean Fivestar
	D. Calypso D18 P

Calv-Ease				Birth				Growth							Carcase			Index	
Dir	Dtrs	GL	Bwt	200	400	600	Mwt	Milk	SS	Cwt	EMA	Fat	TI	SRI					
1.6	-0.1	0.0	2.1	35	72	75	84	7	1.0	55	3.7	0.1	87	105					
45%	42%	53%	75%	69%	69%	64%	52%	38%	68%	56%	45%	54%	(accuracy)						



UK 542191 404544  
born 29/03/22  
kg cm

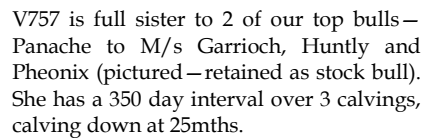
Eyre has been running with heifers. He lost his tail in an accident as a calf.



Myostatin—no variants

Calv-Ease		Birth		Growth						Carcase			Index	
Dir	Dtrs	GL	Bwt	200	400	600	Mwt	Milk	SS	Cwt	EMA	Fat	TI	SRI
5.5	4.9	-1.7	0.2	38	63	77	71	7	1.6	50	4.5	-0.2	32	48
42%	33%	55%	73%	60%	59%	57%	48%	43%	47%	47%	35%	40%	(accuracy)	

UK 542191 504545  
born 10/04/22  
kg cm  
Panther has been running with heifers.



Calv-Ease		Birth		Growth						Carcase			Index	
Dir	Dtrs	GL	Bwt	200	400	600	Mwt	Milk	SS	Cwt	EMA	Fat	TI	SRI
5.1	1.9	-3.6	0.5	55	88	107	85	18	2.2	72	6.0	-0.5	44	62
43%	34%	56%	73%	64%	62%	60%	50%	40%	48%	50%	37%	43%	(accuracy)	



## Lot 17 Dirnanean Barry

UK 542191 404432  
born 30/03/22 Frame Score: 6.1  
694 kg 42 cm (15th Aug)

V4 bred Anchor, sold to Dom Westcott, Dartmoor and N8 bred Waterloo, to Rob Wainwright on Coll. This is a strong and breedy cow-line with a pile of character. EBVs give a nice balance of beef & maternal traits.



Myostatin: No Variants

First Calving	26mth	Feet	10
No Calvings	6	Locomotion	10
Calving Int	359 d	Udder	10
Cow to bull22	798kg	Teats	10
Wean ratio	44%	FrameScore	7.5

Luing Yanis	Lochbroom Talisker
	Luing Ardlarach M52
Dirnanean V4	Berryfell Landmark P
	Dirnanean N8

Calv-Ease				Birth		Index	Growth				Carcase		Index	Maternal				Index	
Dir	Dtrs	GL	Bwt	CV			200	400	Musc	Fat	BV	Milk	Age1st	L/span	Int	MV	MPV		
-1.2	0.4	-1.0	0.6	2			20	30	2.1	0.4	20	-3	-0.06	0.6	-0.9	13	17		
64%	36%	54%	70%	63%			74%	75%	66%	42%	74%	48%	43%	35%	30%	39%	52%		

## Lot 18 Dirnanean Brave

UK 542191 104373  
born 19/03/22 Frame Score: 6.6  
802 kg 39 cm (15th Aug)

Brave has been an outstanding character since the day he was born. Masculine with terrific depth, he has a real breedy look and comes from a dam-line that goes back to the mothers of both Justice and Geldof.



Myostatin: No Variants

First Calving	25mth	Feet	8
No Calvings	10	Locomotion	8
Calving Int	361 d	Udder	9
Cow to bull22	728kg	Teats	9
Wean ratio	53%	FrameScore	7

Drinkstone Panamar P	Buckholm Kramer
	Drinkstone J455 P
Dirnanean P30	Luing Lawman
	Dirnanean K44

Calv-Ease				Birth		Index	Growth				Carcase		Index	Maternal				Index	
Dir	Dtrs	GL	Bwt	CV			200	400	Musc	Fat	BV	Milk	Age1st	L/span	Int	MV	MPV		
-3.1	-0.6	2.5	2.4	-2			27	51	2.8	0	30	0	-0.08	-0.1	-0.2	4	-2		
66%	46%	60%	71%	66%			76%	76%	68%	47%	75%	58%	53%	47%	41%	50%	58%		

## Lot 19 Dirnanean Bismark

UK 542191 604455  
born 08/04/22 Frame Score: 6.7  
710 kg 40 cm (15th Aug)

V23 is a typical hard-working Nugget daughter—never assisted and goes unnoticed in the herd, but consistently brings in a top-end calf.

Myostatin: No Variants



First Calving	24mth	Feet	9
No Calvings	6	Locomotion	9
Calving Int	360 d	Udder	9
Cow to bull22	672kg	Teats	9
Wean ratio	54%	FrameScore	7

Drinkstone Panamar P	Buckholm Kramer
	Drinkstone J455 P
Dirnanean V23 P	Merkland Nugget P
	Dirnanean J4x P

Calv-Ease		Birth		Index	Growth		Carcase		Index	Maternal				Index	
Dir	Dtrs	GL	Bwt	CV	200	400	Musc	Fat	BV	Milk	Age1st	L/span	Int	MV	MPV
-2.9	0.6	3.3	2.6	-3	28	44	3.2	0.3	27	-1	-0.11	0.1	-0.2	13	7
65%	45%	59%	71%	65%	75%	75%	68%	53%	75%	56%	51%	47%	40%	49%	58%

## Lot 20 Dirnanean Barham P

UK 542191 304459  
born 10/04/22 Frame Score: 6.2  
672 kg 37.5 cm (27th Jul)

M85 full sister to Merkland Nugget. This dam line are particularly easy-going and easy-doing. Senator daughters are a correct, productive group of cows. V20 bred Apollo to Glensaugh last year.

Myostatin: No Variants



First Calving	24mth	Feet	9
No Calvings	6	Locomotion	9
Calving Int	367 d	Udder	10
Cow to bull22	716kg	Teats	10
Wean ratio	50%	FrameScore	6.5

Drinkstone Panamar P	Buckholm Kramer
	Drinkstone J455 P
Dirnanean V20 P	Dirnanean Senator P
	Merkland Annie M85 P

Calv-Ease		Birth		Index	Growth		Carcase		Index	Maternal				Index	
Dir	Dtrs	GL	Bwt	CV	200	400	Musc	Fat	BV	Milk	Age1st	L/span	Int	MV	MPV
-3.4	0.3	4.3	3.3	-4	25	35	3.1	0.6	22	-2	-0.02	-0.1	-0.8	0	-8
65%	45%	59%	71%	65%	75%	75%	68%	53%	75%	57%	49%	46%	40%	48%	57%

## Reference Sire Drinkstone Panamar P

Panamar packs an enormous capacity, depth and character into a medium frame—he has got to be the biggest little bull you’ve ever seen! He worked 4 seasons on the Island of Luing, then another 4 here, this being his last crop.

Ease-of-fleshing, correctness and style are his trademarks.



Buckholm Kramer	Buckholm Endeavour
	Buckholm G13
Drinkstone J455 P	Drinkstone Edmonton
	Drinkstone C58 P



Lochbroom Talisker	Luing Lewis
	Lochbroom Katie M7
Luing Ardluing M52	Luing Crusader
	Luing Ardlarach H891

## Reference Sire Luing Yanis

We really admired this bull’s sire and dam on the Island of Luing. When Yanis came along as a youngster with the character, depth, square-made hips, deep, solid feet and big scrotal we thought he’d fit our herd. A solid set of EBVs—especially good calving ease and calving interval sealed the deal for us and he was top price at Cadzow Production Sale Nov 2020

## Reference Sire Te Mania Nebo

Te Mania Australia was a herd and breeding program that really impressed me when I spent a few days there in 2015. Although bred for the high marbled Japanese market, these no-nonsense cattle had plenty scope, growth and functionality.

Nebo is a Angus Australia trait leader for Calving Ease, Docility and Marbling.

We think he is a great fit for a heifer-bull: short gestation, low birthweight and easy-fleshing cattle. UK EBVs below:



Te Mania Jenkins J89	G A R Twinhearts 8418
	Te Mania Japara G115
Te M. Wargoona J214	Vermont Drambuie D57
	Te M Wargoona G455

Calv-Ease				Birth				Growth				Carcase				Index	
Dir	Dtrs	GL	Bwt	200	400	600	Mwt	Milk	SS	Cwt	EMA	Fat	TI	SRI			
5.8	3.0	-4.0	0.0	60	93	112	90	18	3.1	74	7.0	-0.7	47	67			
70%	50%	91%	96%	90%	91%	85%	67%	64%	85%	80%	62%	62%	(accuracy)				

## Reference Sire

### Slievenagh Joker P

Our test for stock sires is *Do they fit into the 'Functional, Efficient & Robust' box*. Joker fits comfortably.

We like his depth and muscle pattern, his masculinity and disposition—and we like that he's never any hassle.

His daughters have calved at 2yo and are making a job of their calves without much fuss. His sons have a good bit of power and really tip the scales.



Kilbride F. Glenhead P	Sneumgaard Imperator PP
	Kilbride Farm Jolly 12D
Slievenagh Whitney	Cleenagh Flasher
	Woodhall Riva

Calv-Ease		Birth		Growth						Carcase			Index	
Dir	Dtrs	GL	Bwt	200	400	600	Mwt	Milk	SS	Cwt	EMA	Fat	TI	SRI
-0.6	-1.7	0.8	4.3	45	91	96	106	6	0.4	66	3.2	-0.5	105	113
71%	64%	77%	89%	84%	82%	78%	61%	47%	77%	68%	55%	64%	(accuracy)	



## Pentland Livestock & Auctions Limited

PROCUREMENT, AUCTION AND VALUATION SERVICES




CONDUCTING REGULAR ONLINE AUCTIONS  
OF VEHICLES, MACHINERY, SMALL TOOLS, ANTIQUES & COLLECTABLES  
**ALSO FARM DISPERSAL & OTHER SALES CONDUCTED LIVE ONSITE**  
**HILLHEAD BUSINESS PARK, CORTACHY ROAD, KIRRIEMUIR, DD8 4PB**

FOR A FIRST CLASS SERVICE CONTACT  
**GRAHAM OR FIONA BURKE**  
Tel: 07547 369 295 or Email: [graham@pentlandlivestock.co.uk](mailto:graham@pentlandlivestock.co.uk)  
Please visit our up-to-date website at [www.pentlandlivestock.co.uk](http://www.pentlandlivestock.co.uk)



'Have Gavel Will Travel'





## Bull Nutrition

Bull fertility and longevity have always been the key focus for us here at Incheoch and our approach to nutrition is designed to support that.

We've worked with Harbro for a number of years now; they understand what we're trying to achieve and design rations that make the best of what we grow on farm, combined with a few key quality products that fit our system.

Together we have come up with some diet parameters —minimum 50% forage on a DM basis, and maximum 20% Starch for bull rations.

The bulls on offer today have a steady life-time growth pattern of around 1.5 kgs per day.

- There is no creep fed, so that maternal ability can be properly gauged.
- Milk, Grass, Grass-silage and Grass again have been the basis of their diet.
- Supplements in first winter were bruised oats, distiller's grains and 1 kg of Buttercup Calf Rearer nuts.
- Supplement over this summer has been 2 to 3 kg per day of Calf Rearer nuts.



### Wintering Option Available

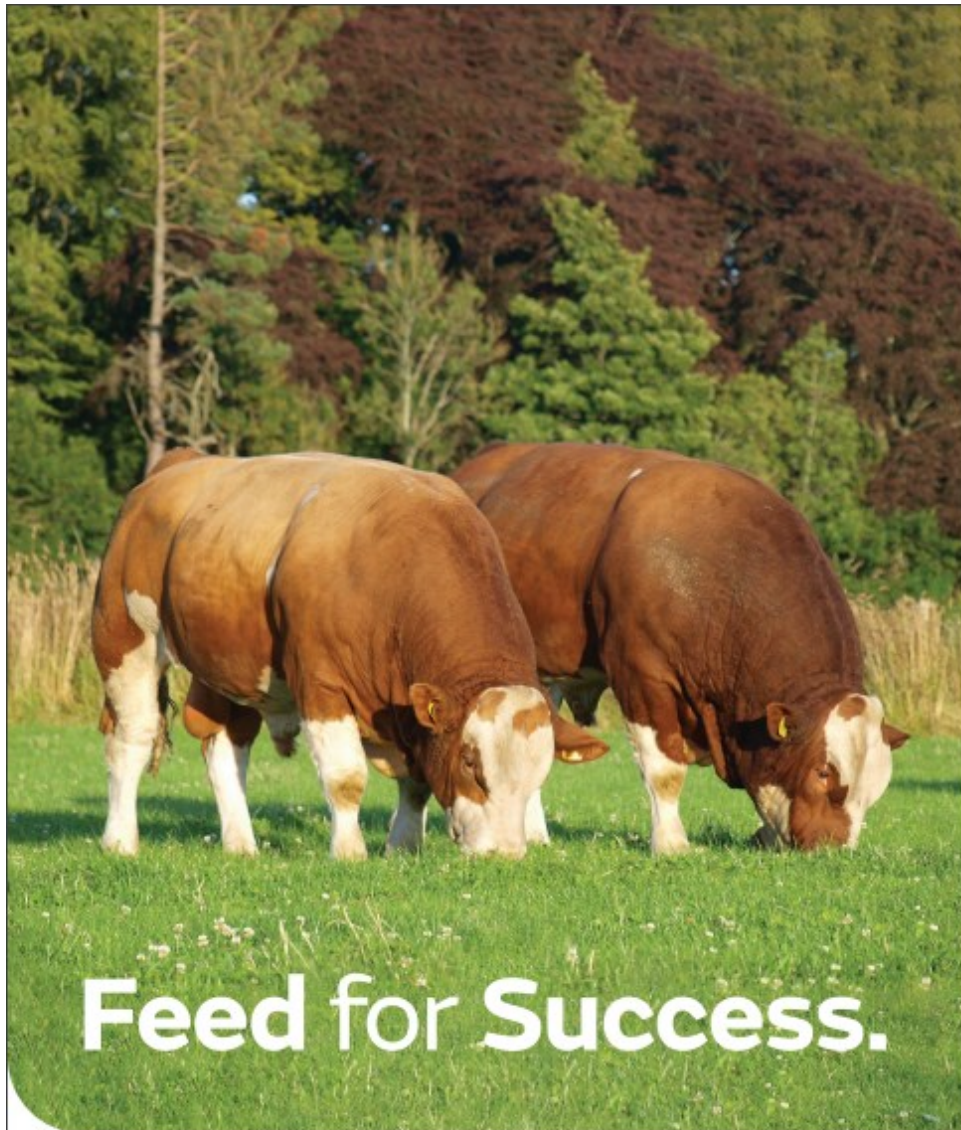
It's fairly easy to winter a young bull to be fit to go to cows as a 2yo — it's another thing having him in sale condition, with a coat of hair and a layer of fat. Help us treat your young herd-sire's rumen and liver with care and buy early.

We can keep your bull at Incheoch until you are ready to take him, free of charge until the end of September, or further through the winter on a feed cost only. Keep payable at uplifted at £25/week. Bulls will be looked after to the best of our ability and will remain at our risk when here. All bulls must be collected by end Feb.

Or why not get him home to acclimatise, maybe give him a turn with some cull cows and get him used to the farm.







# Feed for Success.

Working in partnership with Incheoch Farm to create a tailored ration that promotes longevity, health and fertility.



[www.harbro.co.uk](http://www.harbro.co.uk) [farming@harbro.co.uk](mailto:farming@harbro.co.uk)



**Messrs Finlay McGowan**

Incheoch Farms Alyth Blairgowrie Perthshire **PH11 8HS**

Email: [neil@incheochfarm.co.uk](mailto:neil@incheochfarm.co.uk)

**Finlay & Clare** 01575 560236

**Neil & Debbie** 01828 633652

**N: 07788 100010 D: 07801 783988**

**Jim Smith** 07934 424633

**Pentland Auctions** 07547 369295

*These bulls have been very ably tended to by Jim Smith who has presented them with the help of Bert Taylor - please ask them for any information or help in selecting a bull - or Finlay or Neil.*

*Thank you for supporting our 6th bull sale.*

*We want to make selecting and securing your bull as easy and affordable as possible. We will keep reviewing the sale system—so will welcome your feedback.*

*Please give us a call or stop by for a chat and look around the farm —help us get our sale and breeding programme in line with your goals.*

*From all the team at Incheoch.*

